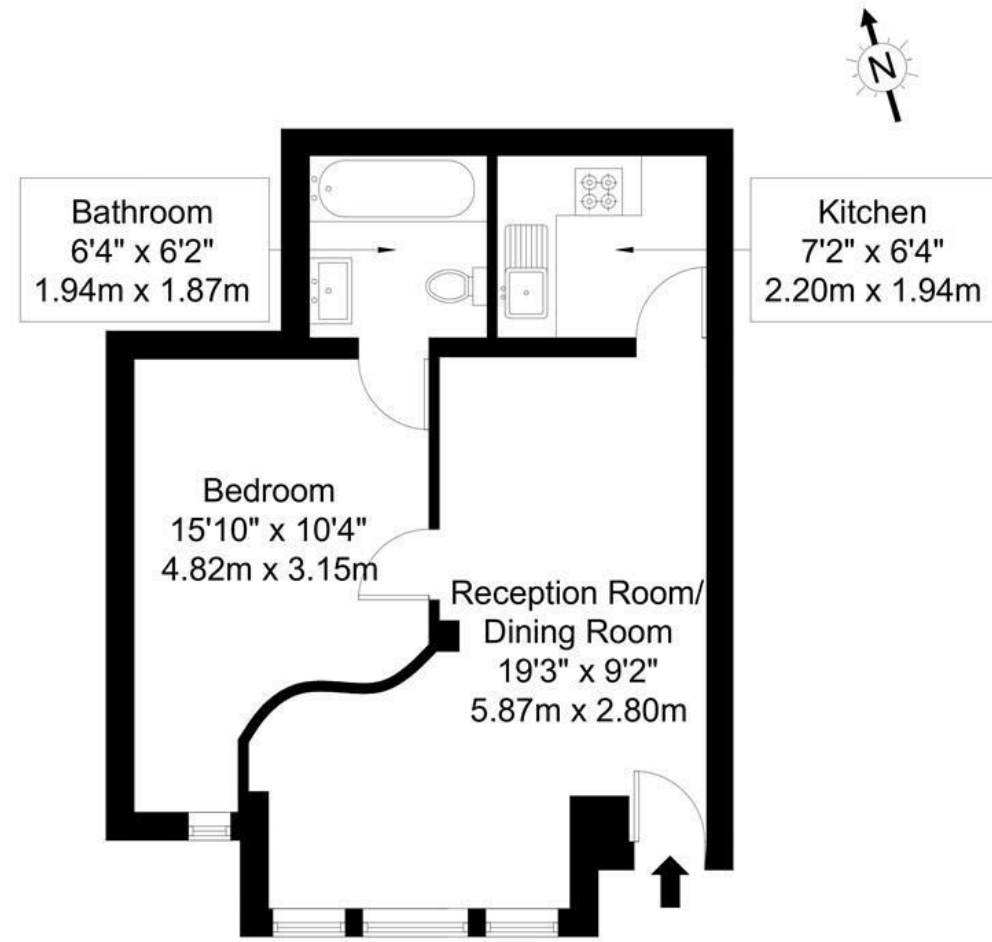


Cambalt Road, SW15 6EW

Approx Gross Internal Area = 42.24 sq m / 454 sq ft



Ground Floor

Ref :

Copyright

**BLEU
PLAN**

The Floor plan is not to scale and measurements and areas shown are approximate and therefore should be used for illustrative purposes only. The plan has been prepared in accordance with the RICS code of Measuring Practice and whilst we have confidence in the information produced it must not be relied on. If there is any aspect of particular importance, you should carry out or commission your own inspection of the property.

Copyright @ BLEUPLAN



DISCLAIMER•These particulars are intended to give a fair and substantially correct overall description for the guidance of intending purchasers and do not constitute an offer or part of a contract. Prospective purchasers and/or lessees ought to seek their own professional advice.

- All descriptions, dimensions, areas, references to condition and necessary permissions for use and occupation and other details are given in good faith and are believed to be correct, but any intending purchasers should not rely on them as statements or representations of fact, but must satisfy themselves by inspection or otherwise as to the correctness of each of them.
- All measurements are approximate.

12 Cambalt Road, London, SW15

A well-presented and ideally located (454 SQ FT) one bedroom apartment with its own private front door, set within this imposing period conversion in the heart of Putney. Of particular note is the large south facing reception/dining room with lots of natural light and with views on to the pretty communal gardens. Residents benefit from well-maintained communal gardens at the front and rear of the block. Cambalt Road is conveniently located within easy walking distance of East Putney underground and Putney High Street with all its amenities. This property is being sold with no onward chain.



- 454 SQ FT
- PRIVATE FRONT DOOR
- MODERN KITCHEN
- EPC RATING: C
- ONE BEDROOM APARTMENT
- RECEPTION/DINING ROOM
- BATHROOM
- CHAIN FREE

Guide Price

£360,000

Available

