

Selwyn House, SW15

Approximate gross internal area
835 sq ft / 77.57 sq m

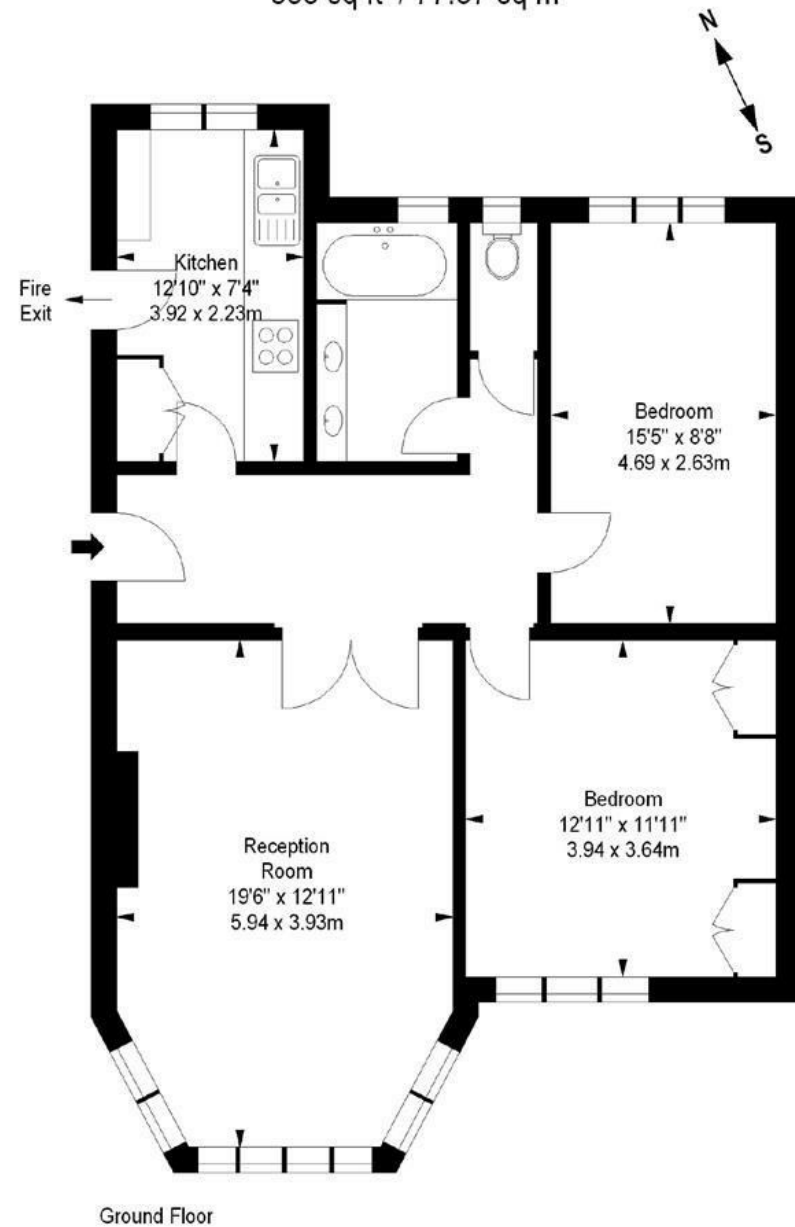


Illustration For Identification Purposes Only. Not To Scale
*Floorplan Drawn According To RICS Guidelines

DISCLAIMER•These particulars are intended to give a fair and substantially correct overall description for the guidance of intending purchasers and do not constitute an offer or part of a contract. Prospective purchasers and/or lessees ought to seek their own professional advice.
•All descriptions, dimensions, areas, references to condition and necessary permissions for use and occupation and other details are given in good faith and are believed to be correct, but any intending purchasers should not rely on them as statements or representations of fact, but must satisfy themselves by inspection or otherwise as to the correctness of each of them.
•All measurements are approximate.



Selwyn House, Putney, SW15

This immaculately presented two double bedroom mansion flat is located on the ground floor of Selwyn House and is superbly situated within the prestigious Manor Fields Estate. Set within 11 acres of beautifully maintained grounds, Manor Fields offers off street parking, 24 hour security and is located within an 8 minute walk to Putney High Street and the mainline Station. Offered on an unfurnished basis the accommodation comprises an entrance hallway, spacious reception room, modern, fully fitted galley-style kitchen, two double bedrooms, bathroom and separate WC. Manor Fields is a prestigious private development perfectly located for all the amenities Putney has to offer as well as close to numerous highly regarded schools. Available late August 2024.



- MANSION APARTMENT
- TWO DOUBLE BEDROOMS
- BATHROOM
- COMMUNAL GARDENS
- EPC D
- SPACIOUS RECEPTION
- MODERN KITCHEN
- SEPARATE WC
- RESIDENTS PARKING
- COUNCIL TAX BAND E

Per Calendar Month
£2,400 Per Calendar Month

