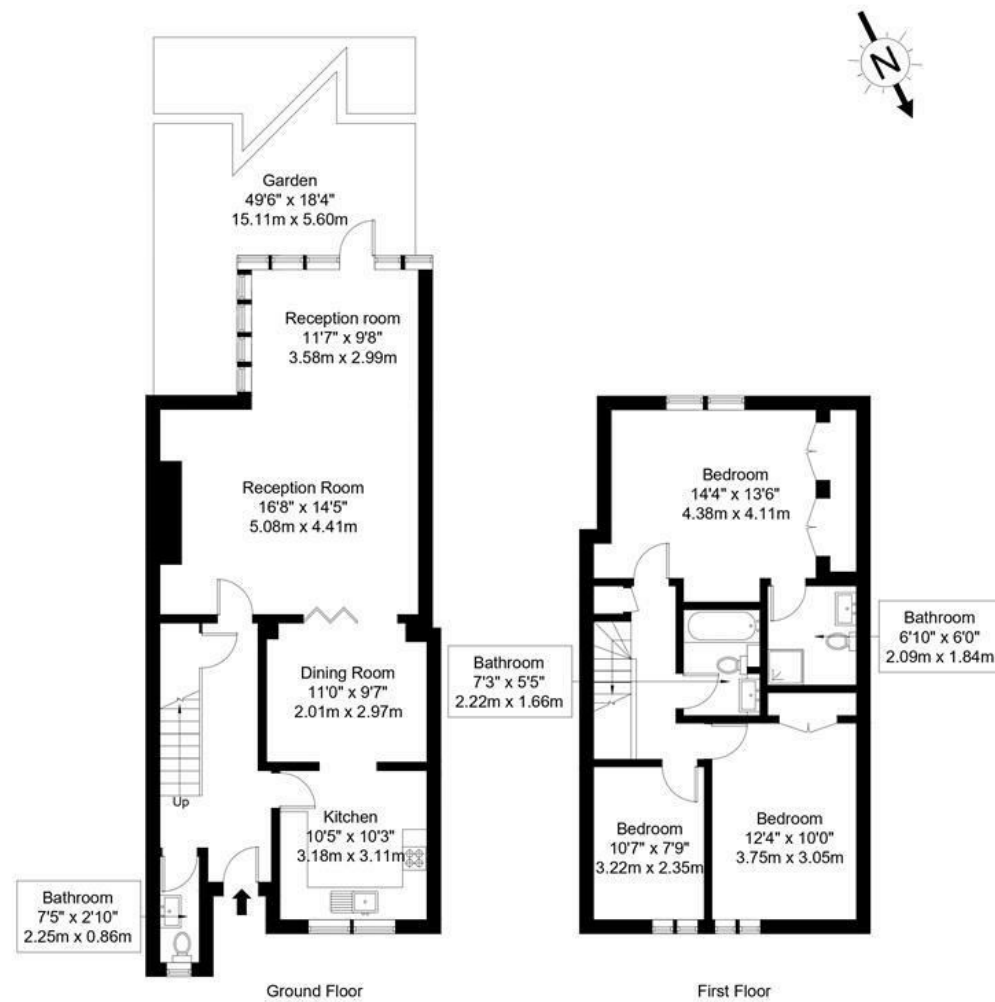


Griffin Gate, SW15 1EZ

Approx Gross Internal Area = 131.65 sq m / 1417 sq ft



Ref :

Copyright **BLEU PLAN**

The Floor plan is not to scale and measurements and areas shown are approximate and therefore should be used for illustrative purposes only. The plan has been prepared in accordance with the RICS code of Measuring Practice and whilst we have confidence in the information produced it must not be relied on. If there is any aspect of particular importance, you should carry out or commission your own inspection of the property.
Copyright © BLEUPLAN

DISCLAIMER•These particulars are intended to give a fair and substantially correct overall description for the guidance of intending purchasers and do not constitute an offer or part of a contract. Prospective purchasers and/or lessees ought to seek their own professional advice.
•All descriptions, dimensions, areas, references to condition and necessary permissions for use and occupation and other details are given in good faith and are believed to be correct, but any intending purchasers should not rely on them as statements or representations of fact, but must satisfy themselves by inspection or otherwise as to the correctness of each of them.
•All measurements are approximate.



Griffin Gate, Putney, SW15

A three bedroom house located in this private secluded gated development in West Putney. Griffin Gate is set back from The Lower Richmond Road and is therefore close to all the local shops, restaurants and pubs and just a short stroll from The River Thames as well as the green open spaces of Putney Common.

The ground floor entrance opens in to a spacious hallway with a downstairs cloakroom and large under stairs storage cupboard. A good sized kitchen leads through to a dining room and on to a spacious reception room with feature fireplace. To the rear of the property there is a conservatory with doors leading to a private south facing garden.

The upper floors comprise, master bedroom with en- suite shower room, family bathroom and two further bedrooms whilst there is ample loft storage with ladders for easy access. Both lofts are boarded and one is also insulated and carpeted with a velux window.

This property is being offered with no onward chain.



- THREE BEDROOMS
- DINING ROOM
- CONSERVATORY
- EN-SUITE SHOWER ROOM
- PRIVATE PARKING
- KITCHEN
- RECEPTION ROOM
- BATHROOM
- SOUTH FACING GARDEN

Guide Price
£1,295,000
Under Offer (SSTC)

