

## GWENDOLEN AVENUE, SW15

Approx. gross internal area (Including eaves) = 736 Sq Ft. / 68.4 Sq M

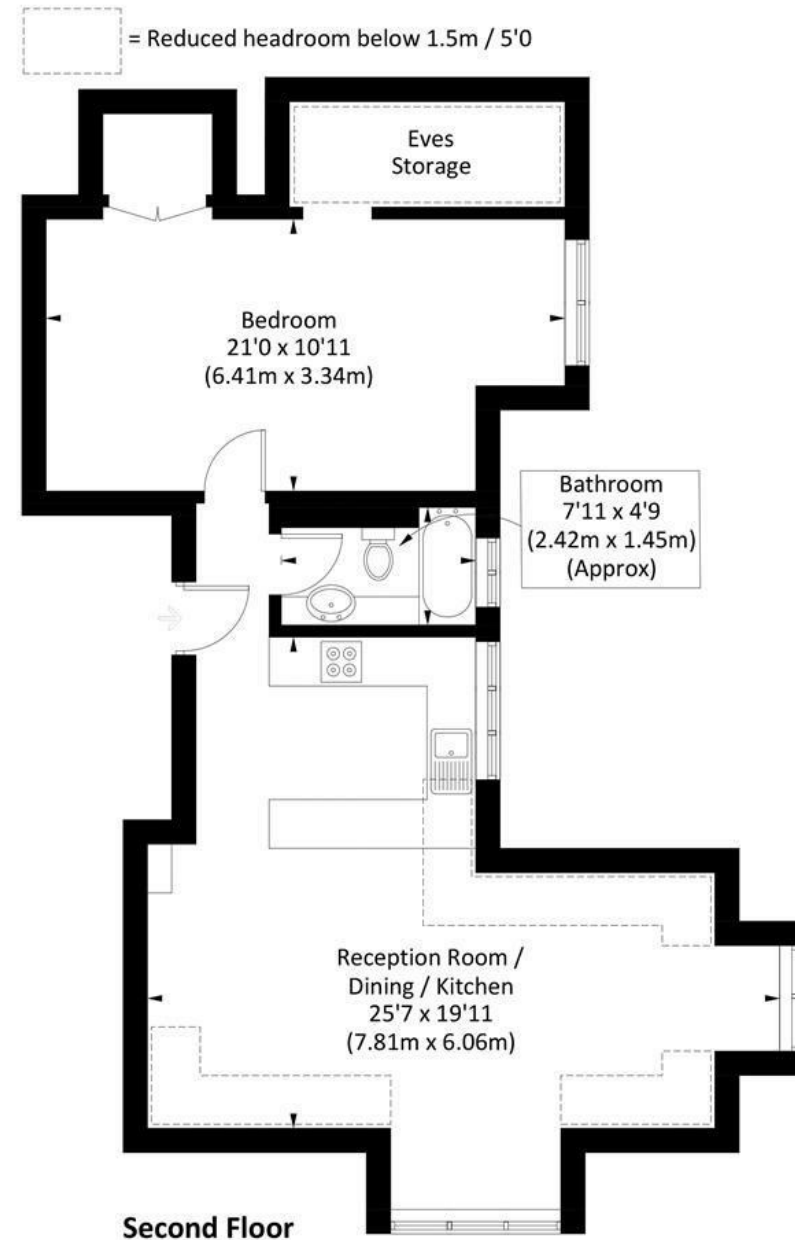


Illustration for identification purposes only, measurements are approximate, not to scale. FloorplansUsketch.com © 2022 (ID878440)

**DISCLAIMER**•These particulars are intended to give a fair and substantially correct overall description for the guidance of intending purchasers and do not constitute an offer or part of a contract. Prospective purchasers and/or lessees ought to seek their own professional advice.

•All descriptions, dimensions, areas, references to condition and necessary permissions for use and occupation and other details are given in good faith and are believed to be correct, but any intending purchasers should not rely on them as statements or representations of fact, but must satisfy themselves by inspection or otherwise as to the correctness of each of them.  
•All measurements are approximate.



## Gwendolen Avenue, Putney, SW15

A spectacular one bedroom flat one the top floor of this imposing period house in the heart of Putney. Offered on an unfurnished basis and benefiting from being five minutes from the high street, the accommodation comprises a spacious reception room with vaulted ceilings, open plan kitchen, huge double bedroom with good storage and bathroom with shower over the bath. Available from the mid August 2024.



- TOP FLOOR FLAT
- OPEN PLAN KITCHEN
- BATHROOM
- EPC D
- VAULTED RECEPTION ROOM
- HUGE DOUBLE BEDROOM
- PRIME LOCATION
- COUNCIL TAX BAND D

Per Calendar Month  
**£1,950 Per Calendar Month**



