

Fernhill Place

Approx. gross internal area 916 Sq Ft. / 85.1 Sq M

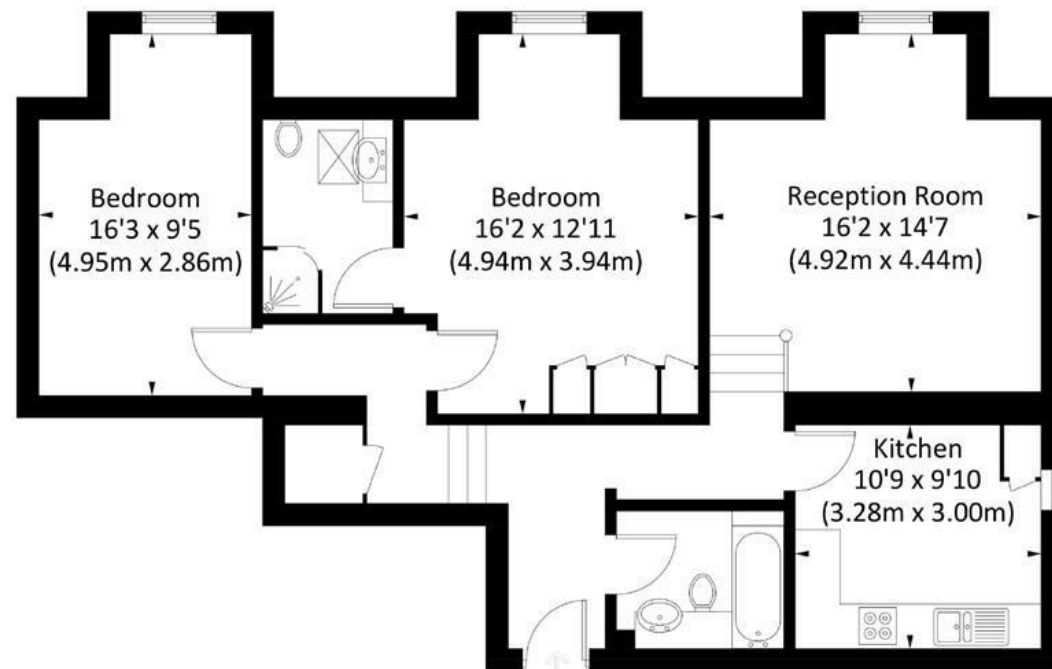


Illustration for identification purposes only, measurements are approximate, not to scale. FloorplansUsketch.com © 2018 (ID404192)

DISCLAIMER•These particulars are intended to give a fair and substantially correct overall description for the guidance of intending purchasers and do not constitute an offer or part of a contract. Prospective purchasers and/or lessees ought to seek their own professional advice.

•All descriptions, dimensions, areas, references to condition and necessary permissions for use and occupation and other details are given in good faith and are believed to be correct, but any intending purchasers should not rely on them as statements or representations of fact, but must satisfy themselves by inspection or otherwise as to the correctness of each of them.
•All measurements are approximate.



Fernhill Place, Putney, SW15

A superb, spacious and perfectly located two double bedroom apartment on the first floor of this converted period property in the heart of Upper West Putney. Offered on a furnished basis and benefiting from a communal garden and off-street parking, the accommodation comprises an entrance hallway, large reception room with dining area, fully fitted kitchen, principal bedroom with en suite shower room, a further double bedroom and further full bathroom. Fernhill Place is ideally located within a short walk of all the amenities and transport Putney has to offer. Available late July 2024.



- FIRST FLOOR FLAT
- FITTED KITCHEN
- BATHROOM
- COMMUNAL GARDEN
- EPC C
- LARGE RECEPTION
- TWO DOUBLE BEDROOMS
- SHOWER ROOM
- OFF-STREET PARKING
- COUNCIL TAX BAND E

Per Calendar Month
£2,250 Per Calendar Month

