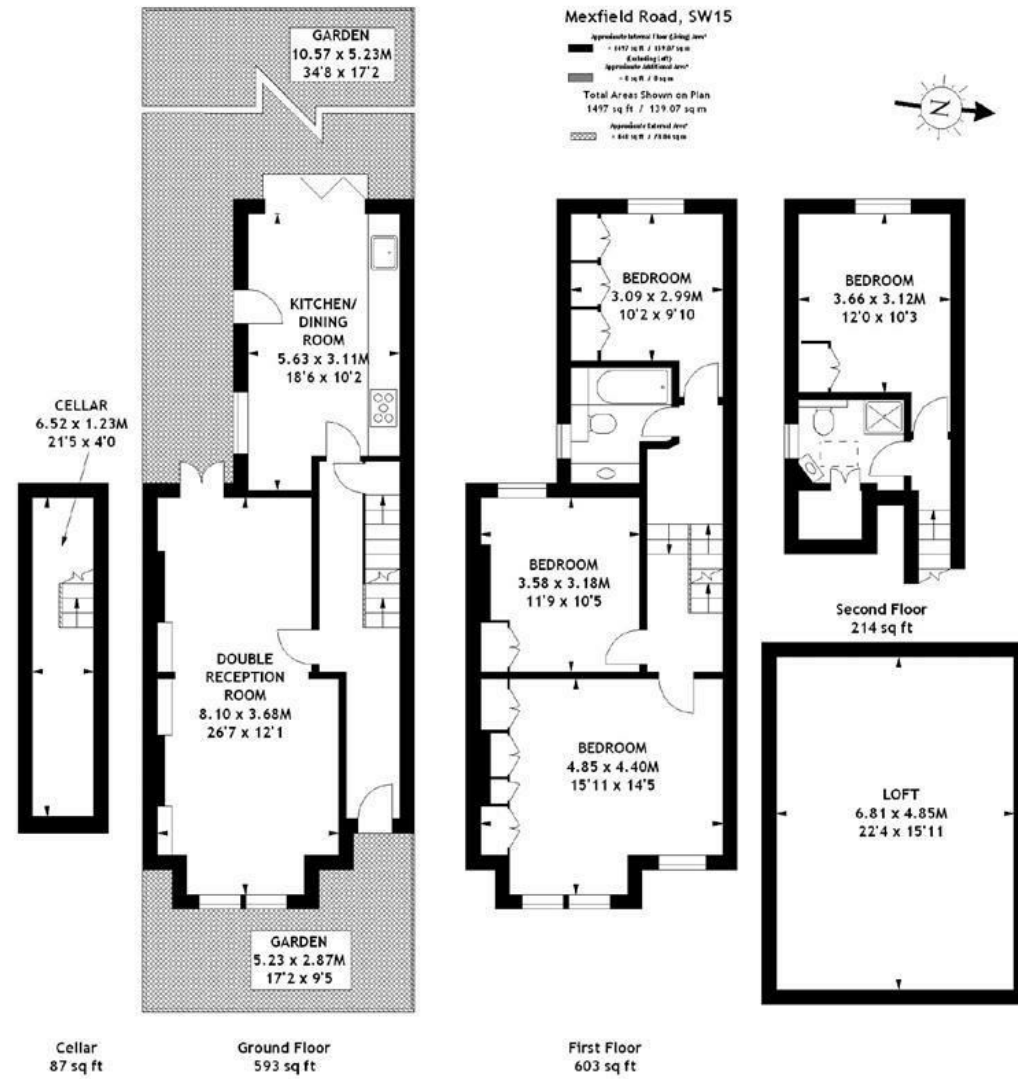


Mexfield Road, Putney, SW15

A beautifully presented four bedroom Victorian terraced house on this popular residential road in the heart of East Putney. Offered on an unfurnished basis and benefiting from a generous west facing garden, the ground floor accommodation comprises an elegant double reception room with wood floors and access to the garden, a modern, fully fitted kitchen/breakfast room, also with access to the garden and cellar. To the upper floors, the versatile accommodation comprises four good size bedrooms, a bathroom and further shower room. Mexfield Road is a popular road which is ideally located for the transport and amenities of both Putney and Wandsworth as well as numerous local schools. Available mid July 2024.



- TERRACED HOUSE
- KITCHEN/BREAKFAST ROOM
- TWO BATH/SHOWER ROOMS
- CELLAR
- EPC D
- DOUBLE RECEPTION ROOM
- FOUR BEDROOMS
- WEST FACING GARDEN
- PRIME LOCATION
- COUNCIL TAX BAND G

Per Calendar Month
£4,000 Per Calendar Month

