

## WINTHORPE ROAD, SW15

Approx. gross internal area 1285 Sq Ft. / 119.4 Sq M

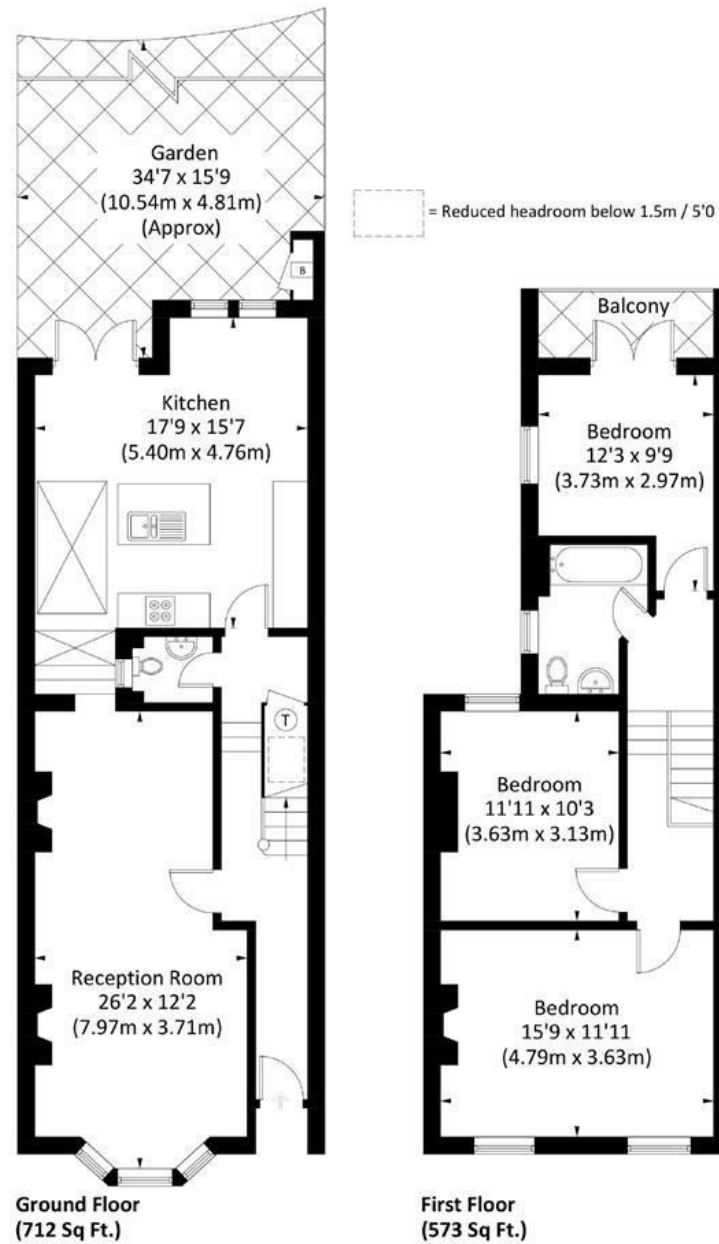


Illustration for identification purposes only, measurements are approximate, not to scale. FloorplansUsketch.com © 2018 (ID486597)

**DISCLAIMER**•These particulars are intended to give a fair and substantially correct overall description for the guidance of intending purchasers and do not constitute an offer or part of a contract. Prospective purchasers and/or lessees ought to seek their own professional advice.  
 •All descriptions, dimensions, areas, references to condition and necessary permissions for use and occupation and other details are given in good faith and are believed to be correct, but any intending purchasers should not rely on them as statements or representations of fact, but must satisfy themselves by inspection or otherwise as to the correctness of each of them.  
 •All measurements are approximate.

## Winthorpe Road, Putney, SW15

A stunning three bedroom terraced house located on this centrally located no-through road in East Putney. Offered on an unfurnished basis and benefiting from a private garden and being only a short walk from the high street, the ground floor accommodation comprises an entrance hallway, double reception room, extended kitchen/dining room with doors to the garden and guest WC. Upstairs there are three bedrooms, one with a private balcony, and family bathroom. Winthorpe Road is ideally located for all the amenities and transport Putney has to offer. Available early July 2024.



- TERRACED HOUSE
- KITCHEN/DINING ROOM
- BATHROOM
- PRIVATE GARDEN
- EPC C
- DOUBLE RECEPTION
- THREE BEDROOMS
- GUEST WC
- BALCONY
- COUNCIL TAX BAND E

Per Calendar Month  
**£3,500 Per Calendar Month**



