

March Court , SW15

Approx. gross internal area 545 Sq Ft. / 50.63 Sq M

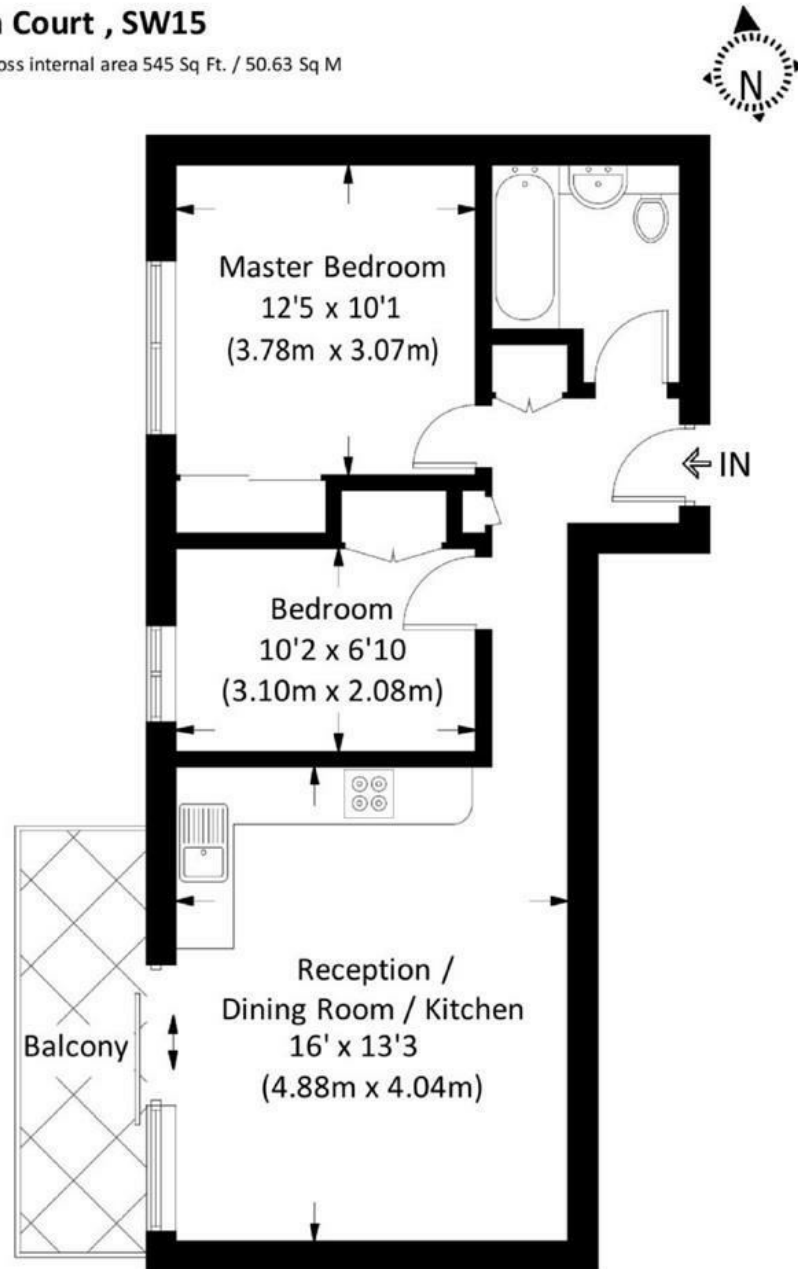


Illustration for identification purposes only, measurements are approximate, not to scale. FloorplansUsketch.com © 2020 (ID623395)

DISCLAIMER•These particulars are intended to give a fair and substantially correct overall description for the guidance of intending purchasers and do not constitute an offer or part of a contract. Prospective purchasers and/or lessees ought to seek their own professional advice.
 •All descriptions, dimensions, areas, references to condition and necessary permissions for use and occupation and other details are given in good faith and are believed to be correct, but any intending purchasers should not rely on them as statements or representations of fact, but must satisfy themselves by inspection or otherwise as to the correctness of each of them.
 •All measurements are approximate.



March Court, Putney, SW15

A charming two bedroom apartment set within this popular purpose built development in West Putney. Comprising reception room/ open plan kitchen with doors leading to a private balcony with views over the communal gardens, two bedrooms, bathroom and private underground parking.

March Court is within easy walking distance of Barnes Station and the green open spaces of Barnes Common. There is a bus stop close by with regular buses taking you back in to Central Putney to the East and Richmond to the West.

This apartment is presented in excellent condition throughout and is being sold with vacant possession and comes with a Share Of Freehold.



- TWO BEDROOMS
- OPEN PLAN KITCHEN
- PRIVATE BALCONY
- COMMUNAL GARDENS
- CLOSE TO TRANSPORT
- RECEPTION ROOM
- BATHROOM
- SECURE UNDERGROUND PARKING
- SHARE OF FREEHOLD
- EPC RATING: C

£440,000

Available

