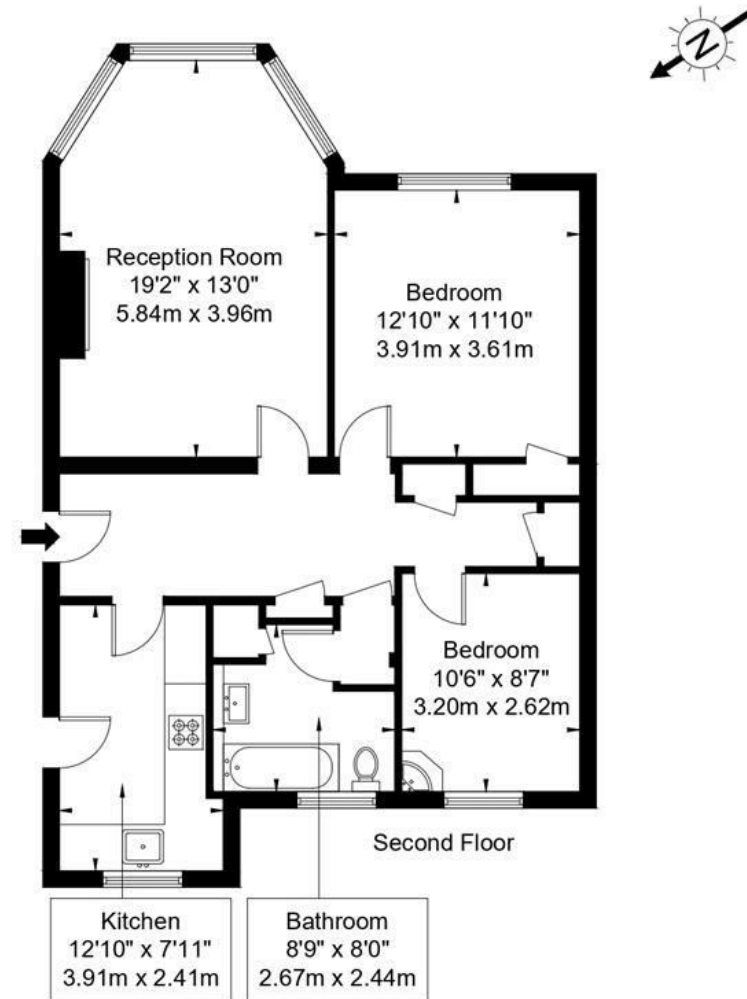


Harvard House, SW15 3NB

Approx Gross Internal Area = 76.3 sq m / 821 sq ft



Ref :

Copyright **BLEU PLAN**

The Floor plan is not to scale and measurements and areas shown are approximate and therefore should be used for illustrative purposes only. The plan has been prepared in accordance with the RICS code of Measuring Practice and whilst we have confidence in the information produced it must not be relied on. If there is any aspect of particular importance, you should carry out or commission your own inspection of the property.

Copyright @ BLEUPLAN

DISCLAIMER•These particulars are intended to give a fair and substantially correct overall description for the guidance of intending purchasers and do not constitute an offer or part of a contract. Prospective purchasers and/or lessees ought to seek their own professional advice.

•All descriptions, dimensions, areas, references to condition and necessary permissions for use and occupation and other details are given in good faith and are believed to be correct, but any intending purchasers should not rely on them as statements or representations of fact, but must satisfy themselves by inspection or otherwise as to the correctness of each of them.
•All measurements are approximate.



Harvard House, London, SW15

A spacious two bedroom apartment in the prestigious, 1930's built, Manor Fields development. Manor Fields is set back from Putney Hill allowing easy access to Putney High street with its excellent shopping and transport facilities. Residents of Manor Fields enjoy the use of vast well tended communal gardens, off street parking, night time security & portage.

The property has well proportioned rooms but does require a degree of modernisation providing an opportunity for a new owner to put their own stamp on it. The property is chain free and sold with a share of freehold.



- ENTRANCE HALL
- TWO BEDROOMS
- BATHROOM
- OFF STREET PARKING
- CHAIN FREE
- LARGE RECEPTION
- KITCHEN
- STORAGE ROOM
- ACRES OF COMMUNAL GARDENS
- SHARE OF FREEHOLD

Guide Price
£525,000

Under Offer (SSTC)

