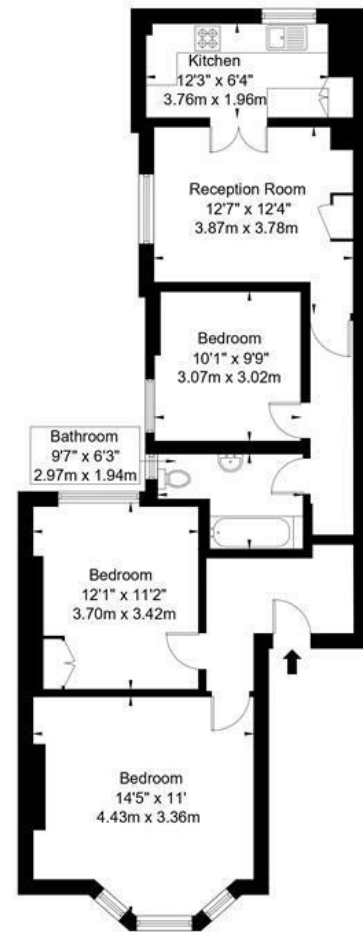


## Norfolk Mansions, London, SW18

A well-presented, Three-bedroom (833 SQ FT) first floor apartment, set within this small mansion block on Santos Road with a communal garden. The property comprises, entrance hallway, living room, separate kitchen, master bedroom and two further double bedrooms. Santos Road is within easy walking distance to Wandsworth Town mainline station and East Putney Tube Station. Southside shopping centre is also conveniently nearby with its superb range of shops, gyms, bars and restaurants. The green open space of King Georges Park with its landscaped gardens, playgrounds, playing fields and tennis courts are just a stones through away. This property is being sold Chain Free

### Santos Road, SW18 1NU

Approx Gross Internal Area = 77.4 sq m / 833 sq ft



First Floor

Ref:

Copyright **BLEU PLAN**

The Floor plan is not to scale and measurements and areas shown are approximate and therefore should be used for illustrative purposes only. The plan has been prepared in accordance with the RICS code of Measuring Practice and whilst we have confidence in the information produced it must not be relied on. If there is any aspect of particular importance, you should carry out or commission your own inspection of the property.  
Copyright @ BLEUPLAN

**DISCLAIMER**•These particulars are intended to give a fair and substantially correct overall description for the guidance of intending purchasers and do not constitute an offer or part of a contract. Prospective purchasers and/or lessees ought to seek their own professional advice.

- All descriptions, dimensions, areas, references to condition and necessary permissions for use and occupation and other details are given in good faith and are believed to be correct, but any intending purchasers should not rely on them as statements or representations of fact, but must satisfy themselves by inspection or otherwise as to the correctness of each of them.
- All measurements are approximate.



- 833 SQ FT
- MASTER BEDROOM
- FAMILY BATHROOM
- KITCHEN
- CHAIN FREE
- FIRST FLOOR MANSION BLOCK APARTMENT
- TWO GUEST BEDROOMS
- LIVING ROOM
- COMMUNAL GARDEN
- EPC RATING: C

Guide Price

**£620,000**

Available



