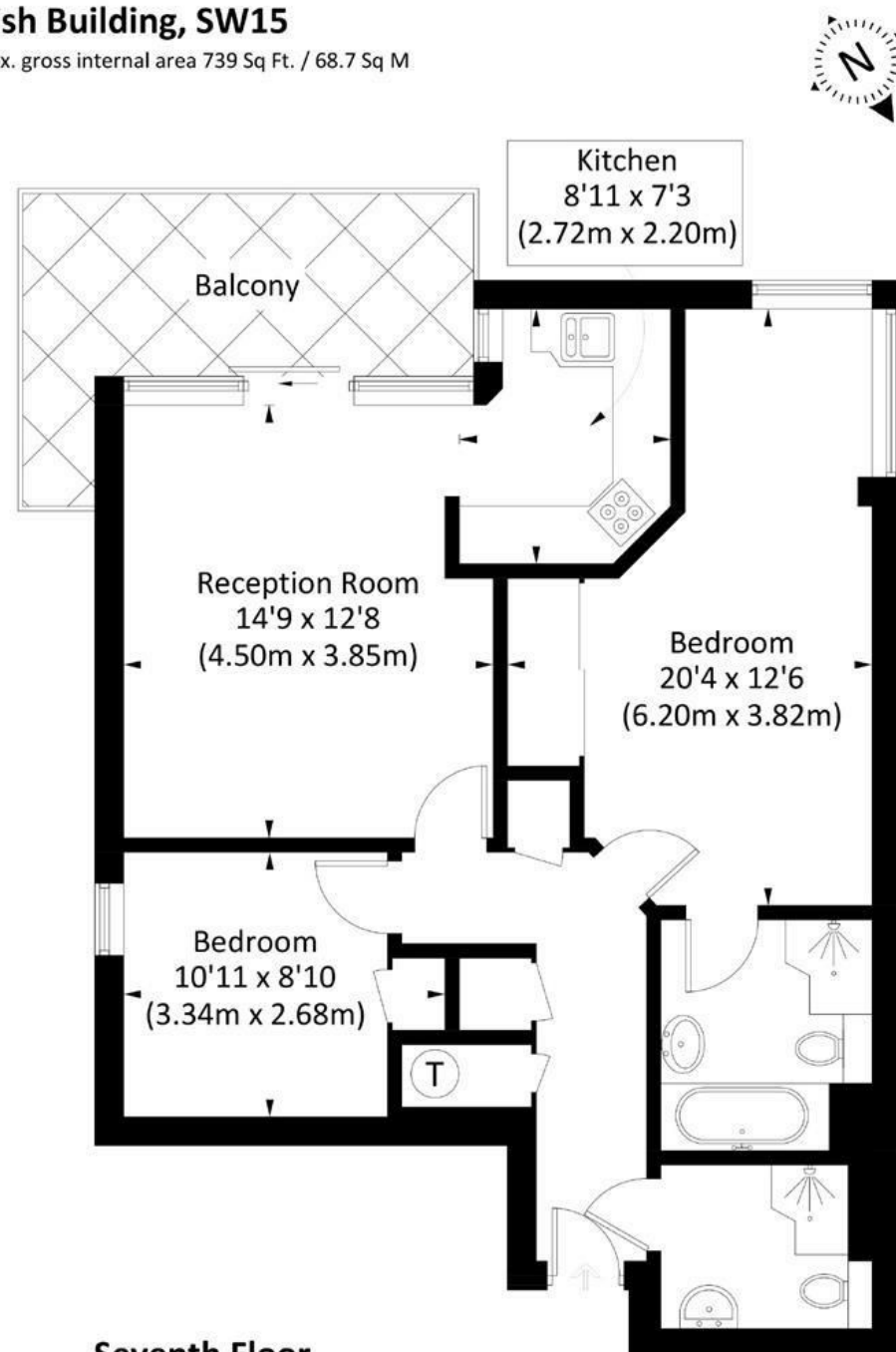


Swish Building, SW15

Approx. gross internal area 739 Sq Ft. / 68.7 Sq M



Seventh Floor

Illustration for identification purposes only, measurements are approximate, not to scale. FloorplansUsketch.com © 2019 (ID594679)

DISCLAIMER•These particulars are intended to give a fair and substantially correct overall description for the guidance of intending purchasers and do not constitute an offer or part of a contract. Prospective purchasers and/or lessees ought to seek their own professional advice.

•All descriptions, dimensions, areas, references to condition and necessary permissions for use and occupation and other details are given in good faith and are believed to be correct, but any intending purchasers should not rely on them as statements or representations of fact, but must satisfy themselves by inspection or otherwise as to the correctness of each of them.
•All measurements are approximate.



Swish, Putney, SW15

A stunning two double bedroom apartment on the seventh floor (with lift) of this prestigious portered building in the heart of Putney. Offered on furnished basis and benefiting from a private terrace and underground parking, the accommodation comprises an entrance hallway, bright reception room with access to the terrace, fully fitted kitchen, principal bedroom with en suite bathroom with bath and separate shower, a further double bedroom and further shower room. This superbly appointed apartment is ideally located less than a minutes walk from the underground and five minutes from Putney High Street. Available early June 2025.



- SEVENTH FLOOR APARTMENT
- MODERN KITCHEN
- TWO BATH/SHOWER ROOMS
- UNDERGROUND PARKING
- EPC D
- RECEPTION ROOM
- TWO DOUBLE BEDROOMS
- PRIVATE TERRACE
- CONCIERGE
- COUNCIL TAX BAND F

Per Calendar Month
£2,500 Per Calendar Month

