

## HAZELWELL ROAD, SW15

Approx. gross internal area 711 Sq Ft. / 66.1 Sq M

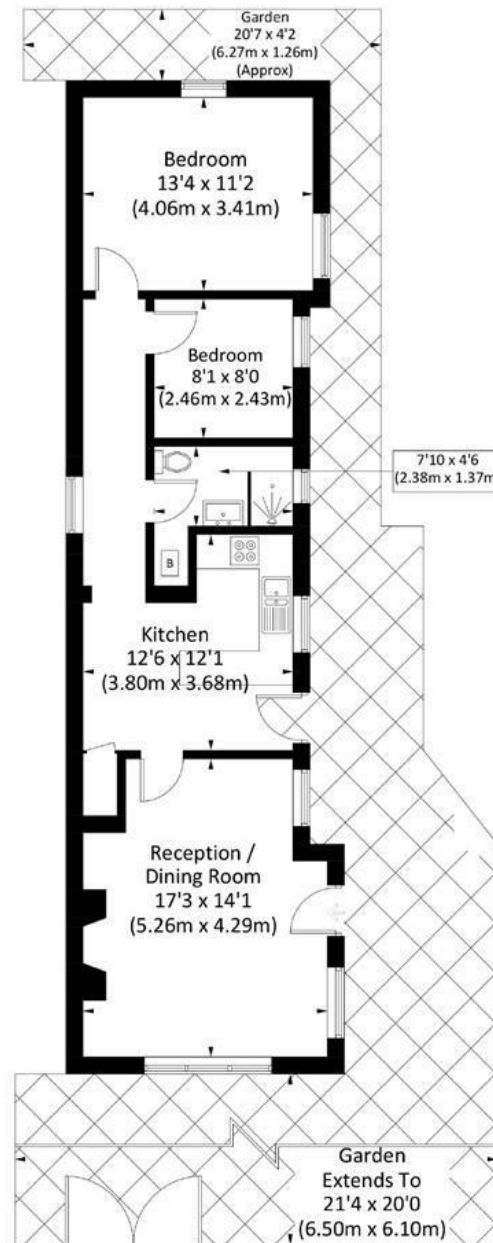


Illustration for identification purposes only, measurements are approximate, not to scale. FloorplansUsketch.com © 2019 (ID567376)

**DISCLAIMER**•These particulars are intended to give a fair and substantially correct overall description for the guidance of intending purchasers and do not constitute an offer or part of a contract. Prospective purchasers and/or lessees ought to seek their own professional advice.

•All descriptions, dimensions, areas, references to condition and necessary permissions for use and occupation and other details are given in good faith and are believed to be correct, but any intending purchasers should not rely on them as statements or representations of fact, but must satisfy themselves by inspection or otherwise as to the correctness of each of them.  
•All measurements are approximate.

## Hazlewell Road, Putney, SW15

It is with great pleasure that we are able to offer this truly unique and spectacular detached two bedroom converted chapel, its secluded location provides a tranquil setting whilst being on one of Putney's most sought after Upper West Putney roads. Offered on an unfurnished basis and benefiting from gated off-street parking and a private patio garden, the accommodation comprises a beautiful drawing room with vaulted ceilings centred around a feature fireplace, a modern, fully fitted kitchen with all appliances, a principal bedroom, again with vaulted ceilings, a second bedroom/nursery/study and a luxury shower room. This fabulous property is located in the heart of the prime, residential Upper West Putney yet within very easy access to the amenities and transport of Putney High Street and numerous highly regarded local state and private schools. This house needs to be seen to be appreciated. Offered on an unfurnished basis and available early May 2024.



- DETACHED FORMER CHAPEL
- RECEPTION ROOM
- TWO BEDROOMS
- VAULTED CEILINGS
- PATIO
- SET BEHIND SECURE GATE
- KITCHEN
- SHOWER ROOM
- OFF-STREET PARKING
- PRIME WEST PUTNEY ROAD

Per Calendar Month  
**£2,250 Per Calendar Month**



