

BALEARIC APARTMENTS, ROYAL VICTORIA DOCK, LONDON, E16 1AP



BALEARIC APARTMENTS, ROYAL VICTORIA DOCK, E16

£665,000

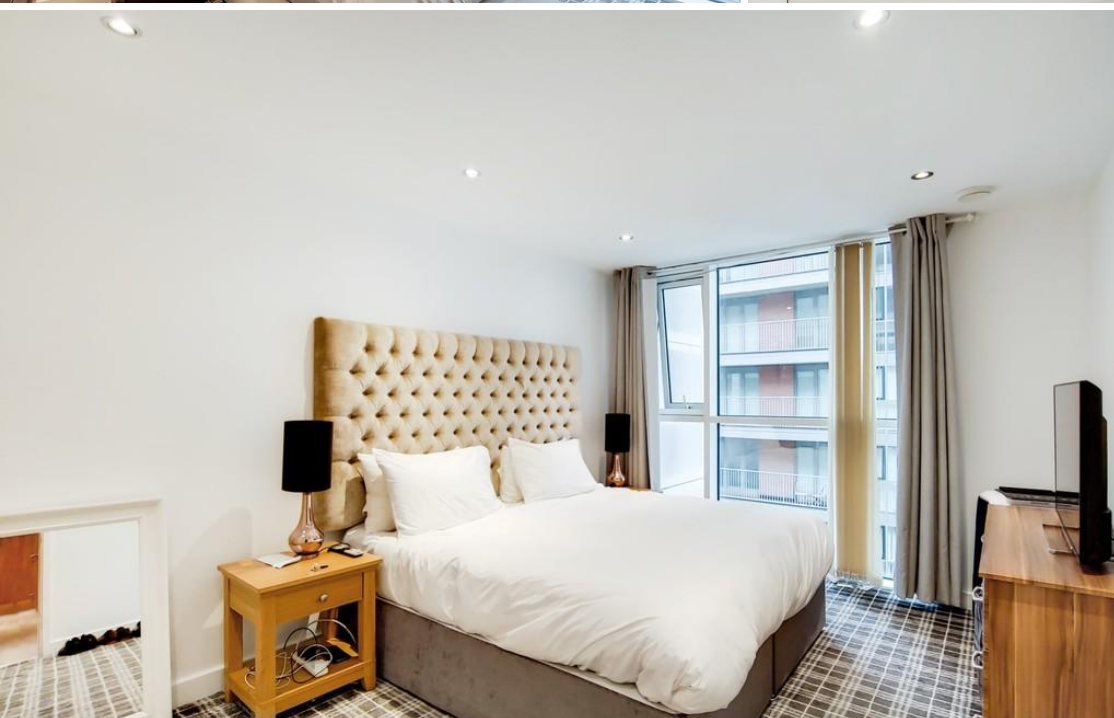


PROPERTY SUMMARY

This fantastic two-bedroom apartment is located on the 8th floor and hosts over 932 sq. ft. of internal living space, whilst also benefitting from spectacular views across the Excel Marina and Canary Wharf.

The property has a stunning open plan lounge, a fully fitted kitchen with integrated appliances, floor to ceiling windows showering the property with natural light and striking views. There are two good sized double bedrooms, one offering a smart en suite shower room and a further fully tiled family bathroom. Additionally, the apartment has been very well maintained throughout and has a secure underground parking space.

Balearic Apartments forms part of the wider Capital East development, which benefits from a 24hr concierge service, residents gymnasium & sauna.



PROPERTY FEATURES

- + Two Bedroom Apartment
- + 8th Floor Location
- + 932 Sq. Ft. Internally
- + Stunning Westery Views
- + Close to Royal Victoria DLR

PROPERTY FEATURES

- + Underground Parking
- + Service Charge: £4,000.00 Per Annum (Approx)
- + Ground Rent: £250.00 Per Annum (Approx)
- + Lease Length: 125 Years Remaining (Approx)
- + Council Tax: Band F

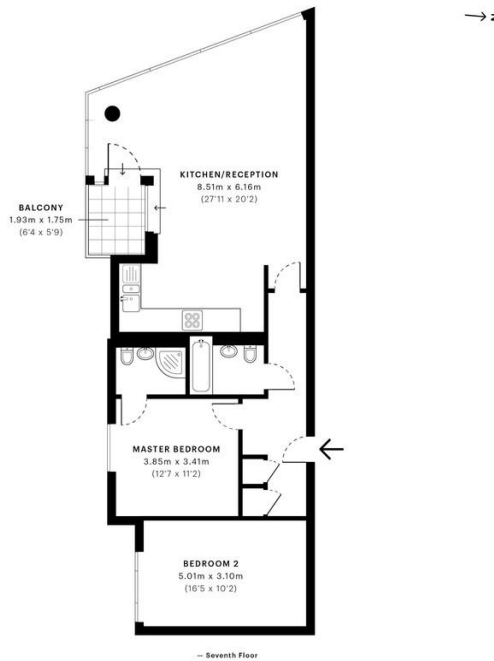
FOR SALE

BALEARIC APARTMENTS, ROYAL VICTORIA DOCK, E16

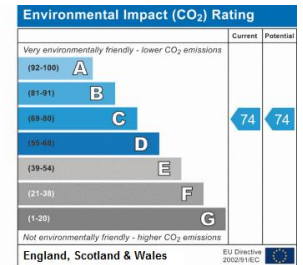
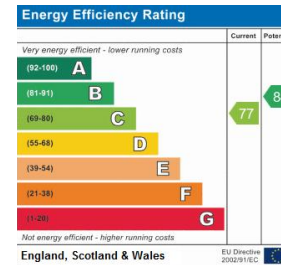
£665,000 LEASEHOLD



MADISON BROOK INTERNATIONAL	Balearic Apartments, E16	GROSS INTERNAL AREA 86.6 Sqm / 932.2 Sqft
CAPTURE DATE 22/11/2019	LASER SCAN POINTS 41,938,816	



- + Ref: 11205
- + Availability: For Sale
- + Bedrooms : 2
- + Bathrooms: 2
- + Reception Rooms: 1
- + Tenure: Leasehold



GROSS INTERNAL AREA (GIA) The highest of the property. 86.6 Sqm / 932.2 Sqft	NET INTERNAL AREA (NIA) Excludes walls and external features, includes warehouses, restricted head 84.4 Sqm / 909.0 Sqft	EXTERNAL STRUCTURAL FEATURES Balconies, terraces, verandas etc. 3.4 Sqm / 36.4 Sqft	RESTRICTED HEAD HEIGHT Limited use areas under 2.0m 0.0 Sqm / 0.0 Sqft
---	---	--	---

Spec floor plans are produced in accordance with the Royal Institution of Chartered Surveyors' Property Measurement Standards. Plots and gardens are illustrative only and are excluded from all area calculations. Due to rounding, numbers may not add up precisely. All measurements shown for the individual room lengths and widths are the maximum points of measurements captured in the scan.

IPM 20 RESIDENTIAL 90.9 Sqm / 978.1 Sqft
IPM 30 RESIDENTIAL 88.7 Sqm / 954.9 Sqft

SPIC ID: Sd643881b724be0a36a345db

Madison Brook International
 Unit B, 20 Western Gateway, Royal Victoria Dock, London, E16 1BS
 T: 020 3946 6000
 E: docklands@madisonbrook.com
MADISONBROOK.COM

MADISON BROOK
INTERNATIONAL

[f](#) [in](#) Madison Brook International [T](#) [@MadisonBrookInt](#)

