



Rancliffe Road
East Ham, London, E6 3HW

£2,250 Per Calendar Month



MADISON BROOK
INTERNATIONAL

Rancliffe Road, East Ham, London, E6 3HW

This gorgeous three-bedroom period house is located in a wonderful tree lined road; boasting a beautiful open-plan kitchen, dining area and lounge with a private rear garden.

This property has been meticulously cared for by the owners, who have returned many of the original period features, added a snug in the loft space, modernised the kitchen and landscaped the garden. This property is available on a part-furnished basis and is ideal for professionals & starter families.

Rancliffe Road is ideally located for all local amenities found on the High Street with the open spaces of Central Park opposite, whilst local interests include the popular Red Door Studios, along with an increasing number of new social spaces, cafe's and bars.

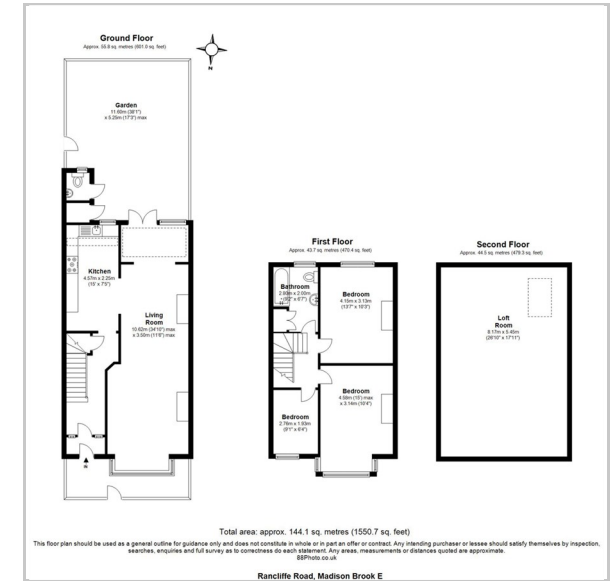
Upton Park & East Ham (District Line, Hammersmith & City line) is the nearest station for direct routes around the City of London, whilst Westfield Stratford, Beckton Triangle & Lakeside are all within a short commute.



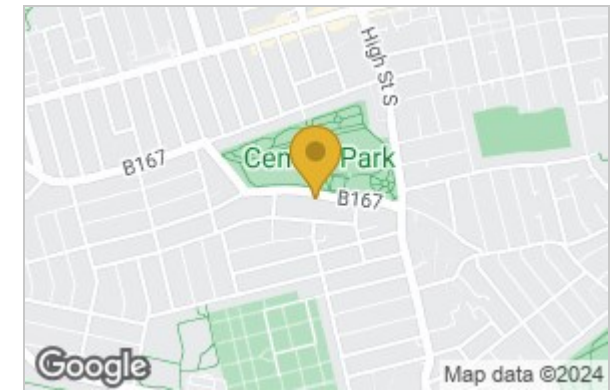
These particulars, whilst believed to be accurate are set out as a general outline only for guidance and do not constitute any part of an offer or contract. Intending purchasers should not rely on them as statements of representation of fact, but must satisfy themselves by inspection or otherwise as to their accuracy. No person in this firm's employment has the authority to make or give any representation or warranty in respect of the property.

20 Western Gateway, Royal Victoria Dock, London, E16 1BS
 Tel: 020 3946 6000 Email: docklands@madisonbrook.com <https://madisonbrook.com/>

Floor Plan



Area Map



Energy Efficiency Graph

