



Living  
made  
better

Adriatic Apartments  
Royal Victoria Dock, E16 1BT



Asking Price £310,000



# Adriatic Apartments, Royal Victoria Dock, E16 1BT

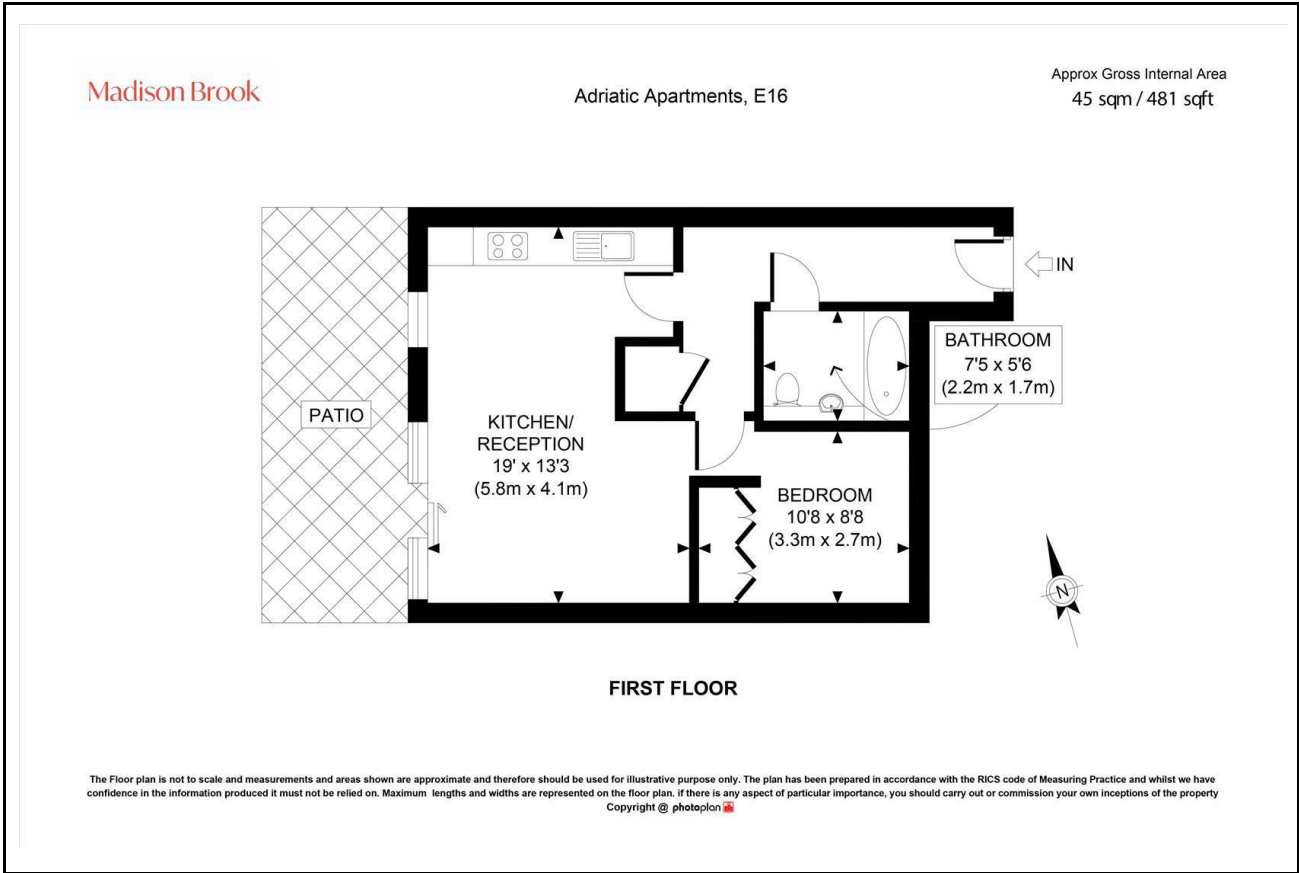
Madison Brook

## Property Summary

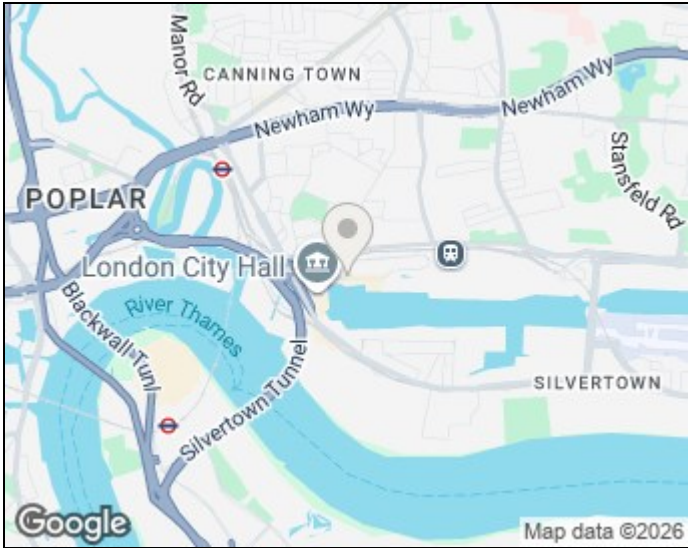
A modern and stylish one-bedroom “studio plus” apartment in Adriatic Apartments, Western Gateway, offering 481 sq. ft. of well-designed living space. The property features a bright open-plan kitchen/living area, private patio with courtyard views, and a modern bathroom. Residents benefit from 24-hour concierge, gym, and secure entry. Ideally located for Royal Victoria DLR and the Elizabeth Line, with quick access to Canary Wharf and the City. Lease length: 140 years.

Lease Length: 140 years | Service Charge: £3,022 p/a | Ground Rent: £150 p/a

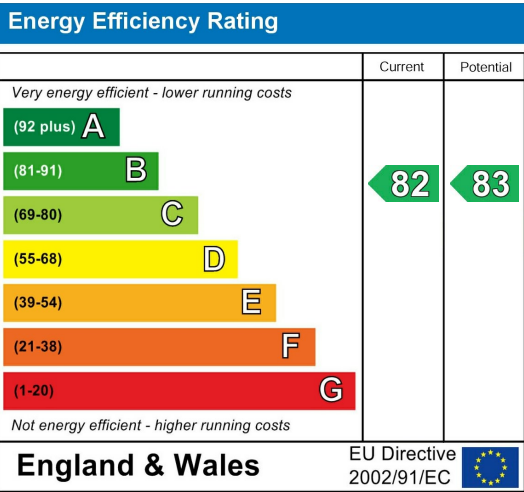
## Floorplan



## Area Map



## Energy Efficiency Graph



These particulars, whilst believed to be accurate are set out as a general outline only for guidance and do not constitute any part of an offer or contract. Intending purchasers should not rely on them as statements of representation of fact, but must satisfy themselves by inspection or otherwise as to their accuracy. No person in this firm's employment has the authority to make or give any representation or warranty in respect of the property.

Unit B 20 Western Gateway, Royal Victoria  
Dock, London, E16 1BS  
Tel: 020 3946 6000 Email:  
docklands@madisonbrook.com  
<https://madisonbrook.com/>