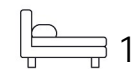




Living
made
better

1 Bywell Place
Canning Town, E16 1JW



Guide Price £300,000

1 Bywell Place, Canning Town, E16 1JW

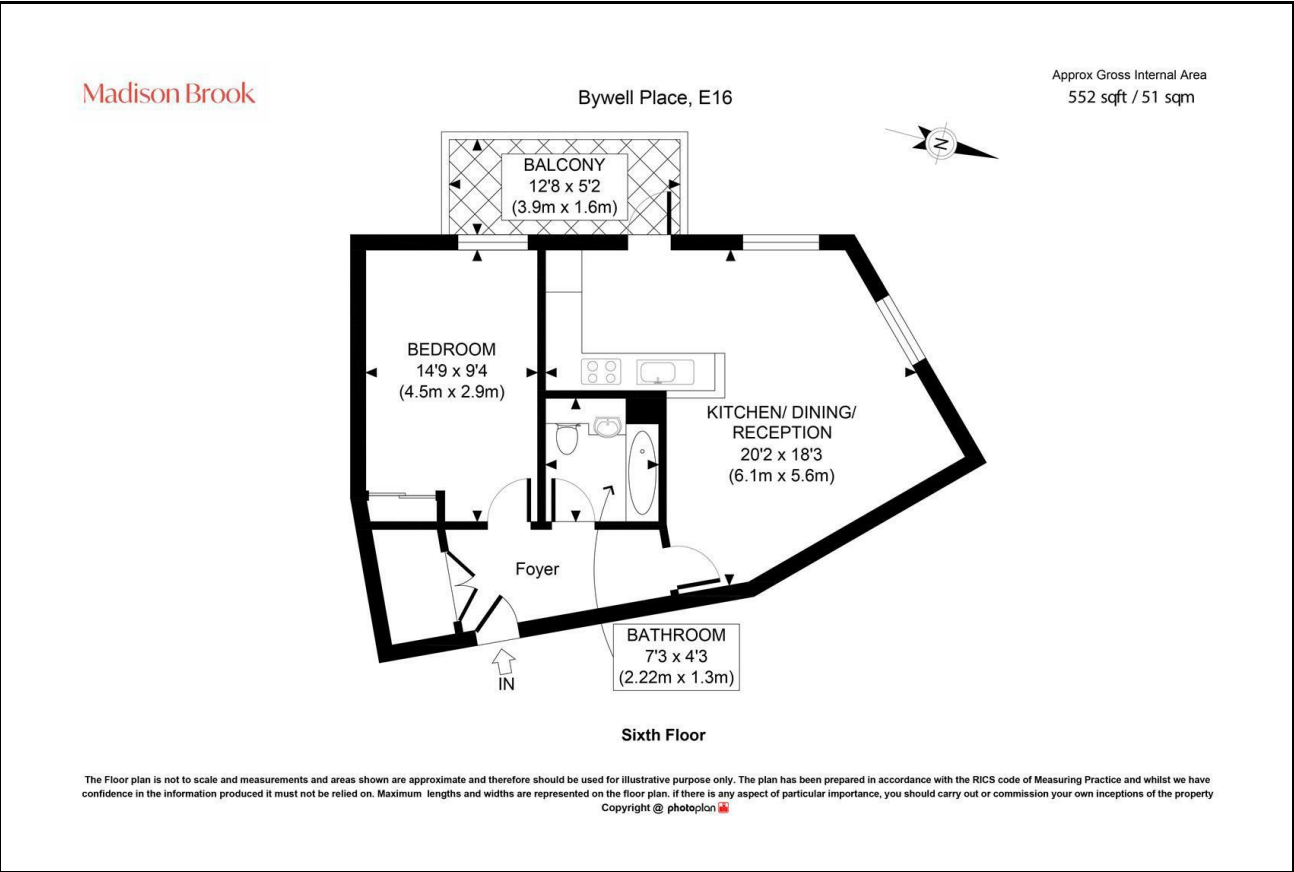
Madison Brook

Property Summary

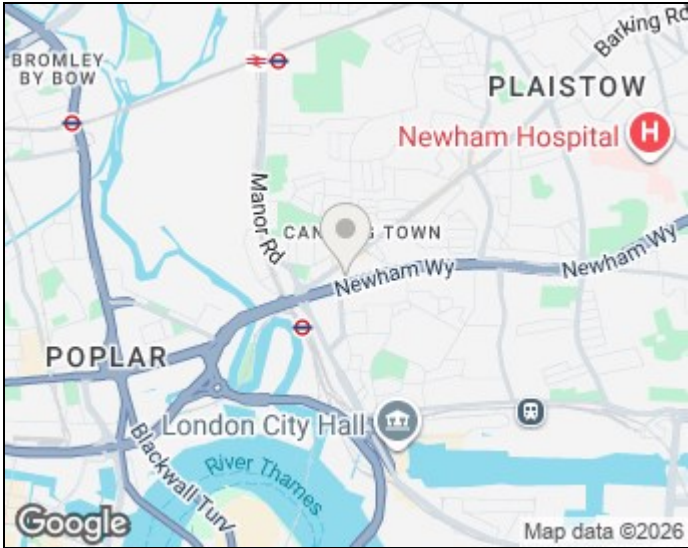
A well-presented one-bedroom apartment set on the sixth floor of a modern development at Bywell Place. The property offers a bright open-plan kitchen and reception space, a generous double bedroom, modern bathroom suite and a private balcony. Ideally positioned close to local amenities and within easy walking distance of Canning Town Underground Station, providing excellent transport links into Canary Wharf and Central London.

Service charge: £3,200 pa | Ground rent: £350 pa | Lease: 134 years remaining

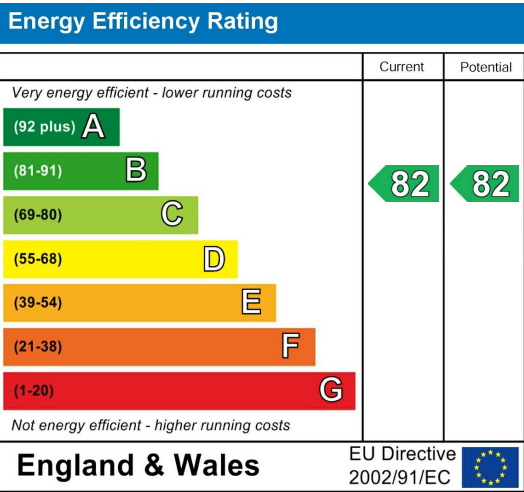
Floorplan



Area Map



Energy Efficiency Graph



These particulars, whilst believed to be accurate are set out as a general outline only for guidance and do not constitute any part of an offer or contract. Intending purchasers should not rely on them as statements of representation of fact, but must satisfy themselves by inspection or otherwise as to their accuracy. No person in this firms employment has the authority to make or give any representation or warranty in respect of the property.

Unit B 20 Western Gateway, Royal Victoria
Dock, London, E16 1BS
Tel: 020 3946 6000 Email:
docklands@madisonbrook.com
<https://madisonbrook.com/>