

Living  
made  
better

The Oxygen  
Royal Victoria Dock, E16 1BQ



£2,800 PCM

# The Oxygen, Royal Victoria Dock, E16 1BQ

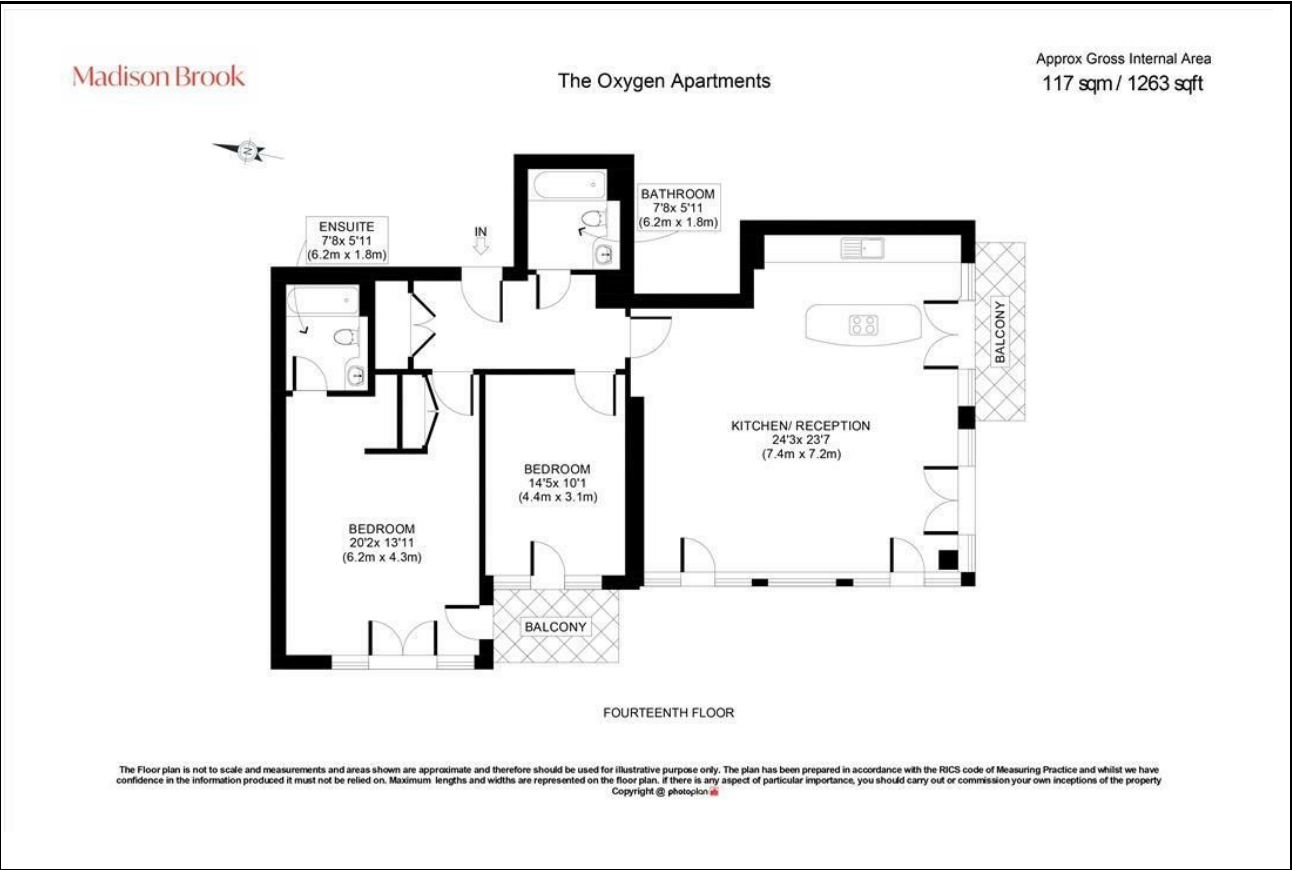
Madison Brook

## Property Summary

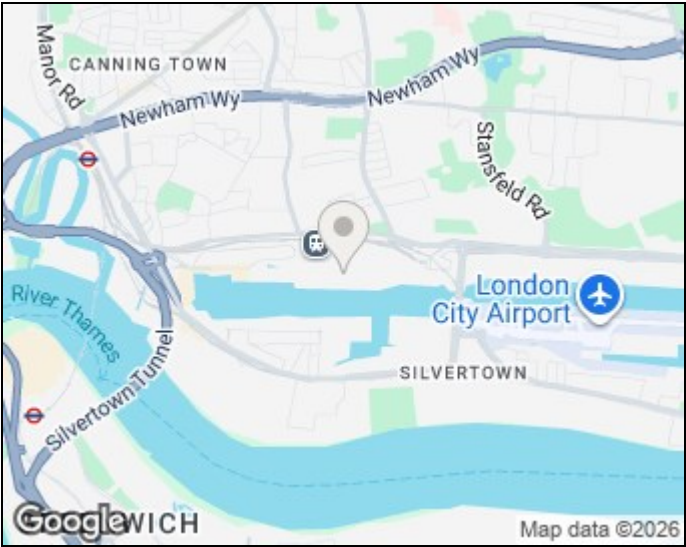
Positioned on the 14th floor of the Oxygen Building, this two-bedroom penthouse offers approx. 1,263 sq. ft. of luxury living space with striking City and Canary Wharf views. The apartment features a spacious open-plan living area with a sleek Italian kitchen, integrated appliances (including coffee machine), and two private balconies. The principal bedroom benefits from an en-suite shower room and balcony access, while the main bathroom is finished in marble with mood lighting and underfloor heating. Parking available by separate negotiation.

Ideally located near Royal Victoria DLR, Custom House (Elizabeth Line), and Canning Town stations, plus riverside restaurants and amenities.

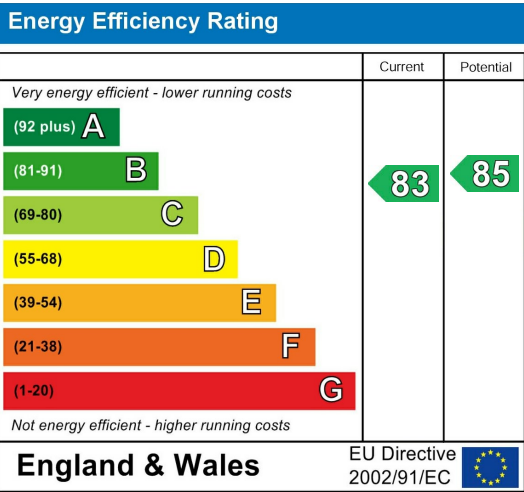
## Floorplan



## Area Map



## Energy Efficiency Graph



Unit B 20 Western Gateway, Royal Victoria  
Dock, London, E16 1BS  
Tel: 020 3946 6000 Email:  
docklands@madisonbrook.com  
<https://madisonbrook.com/>

These particulars, whilst believed to be accurate are set out as a general outline only for guidance and do not constitute any part of an offer or contract. Intending purchasers should not rely on them as statements of representation of fact, but must satisfy themselves by inspection or otherwise as to their accuracy. No person in this firms employment has the authority to make or give any representation or warranty in respect of the property.