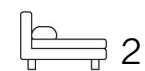




Living
made
better

The Oxygen
Royal Victoria Dock, E16 1BQ



£2,300 PCM

The Oxygen, Royal Victoria Dock, E16 1BQ

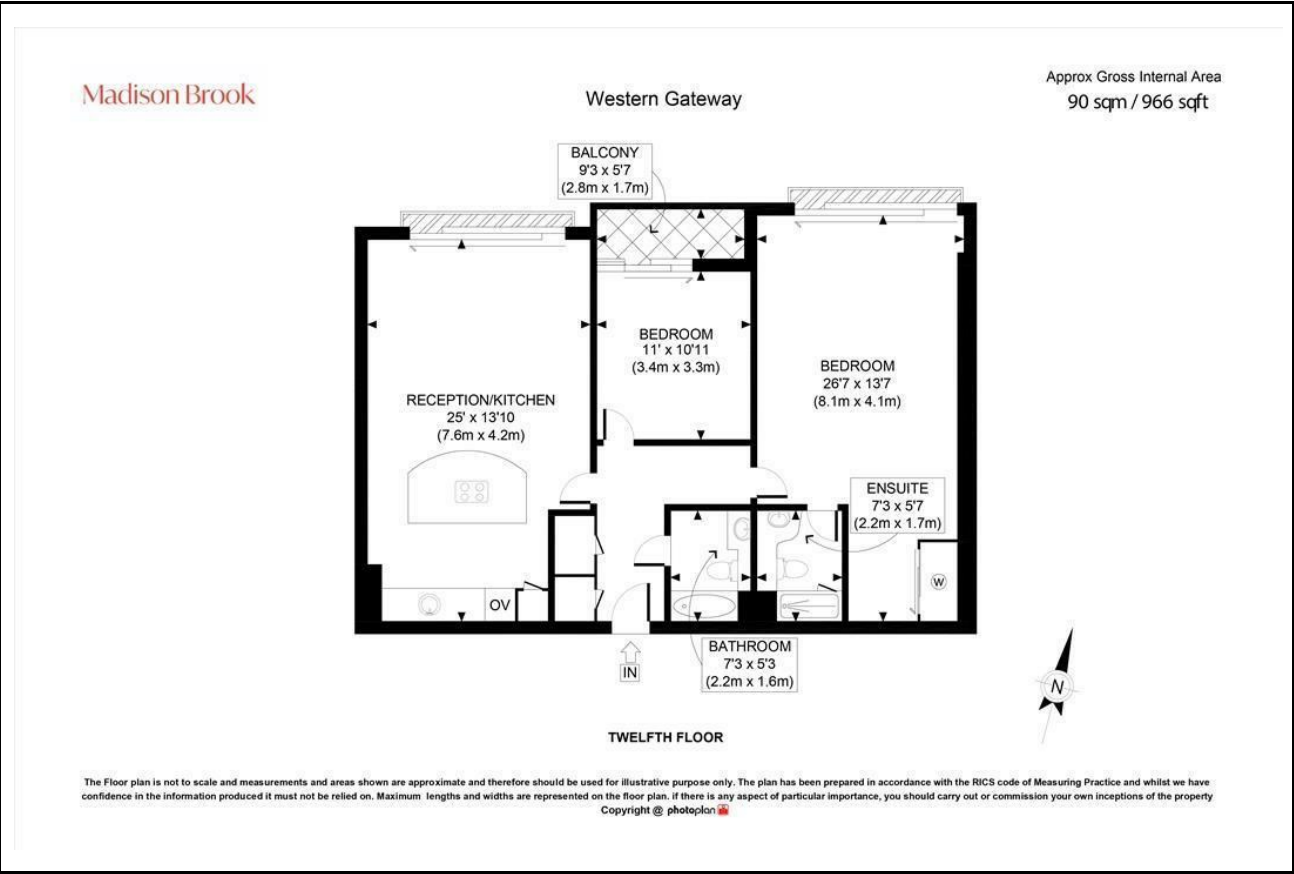
Madison Brook

Property Summary

Located on the 12th floor of the Oxygen Apartments, this well-presented two-bedroom, two-bathroom apartment offers around 966 sq. ft. of bright, modern living space. A generous open-plan reception and fully integrated kitchen opens onto a private balcony via floor-to-ceiling windows, providing excellent natural light. The principal bedroom benefits from an en-suite shower room, the second double has balcony access, and a stylish family bathroom and hallway storage complete the layout.

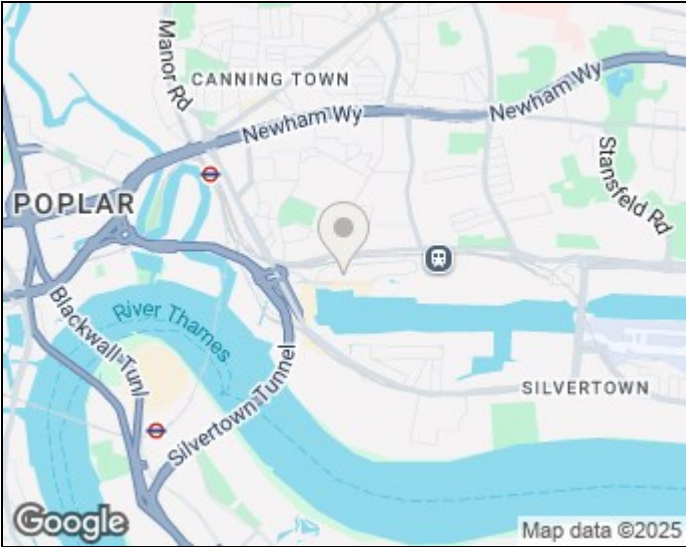
Residents enjoy concierge services and superb transport links via Royal Victoria, Custom House (DLR/Elizabeth Line) and Canning Town (Jubilee & DLR).

Floorplan

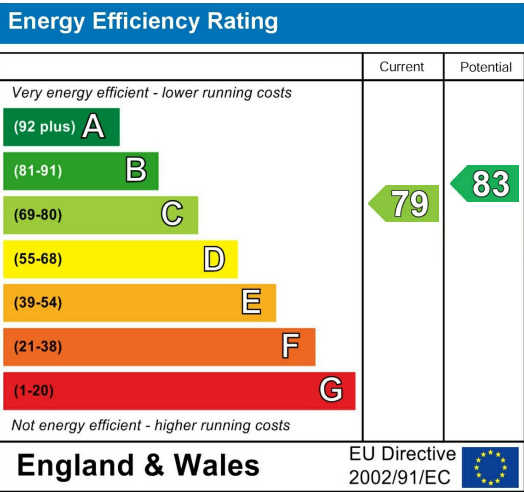


These particulars, whilst believed to be accurate are set out as a general outline only for guidance and do not constitute any part of an offer or contract. Intending purchasers should not rely on them as statements of representation of fact, but must satisfy themselves by inspection or otherwise as to their accuracy. No person in this firm's employment has the authority to make or give any representation or warranty in respect of the property.

Area Map



Energy Efficiency Graph



Unit B 20 Western Gateway, Royal Victoria
Dock, London, E16 1BS
Tel: 020 3946 6000 Email:
docklands@madisonbrook.com
<https://madisonbrook.com/>