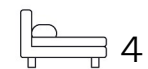




Living
made
better

Atkinson Road
West Beckton, E16 3LP



£2,500 PCM

Atkinson Road, West Beckton, E16 3LP

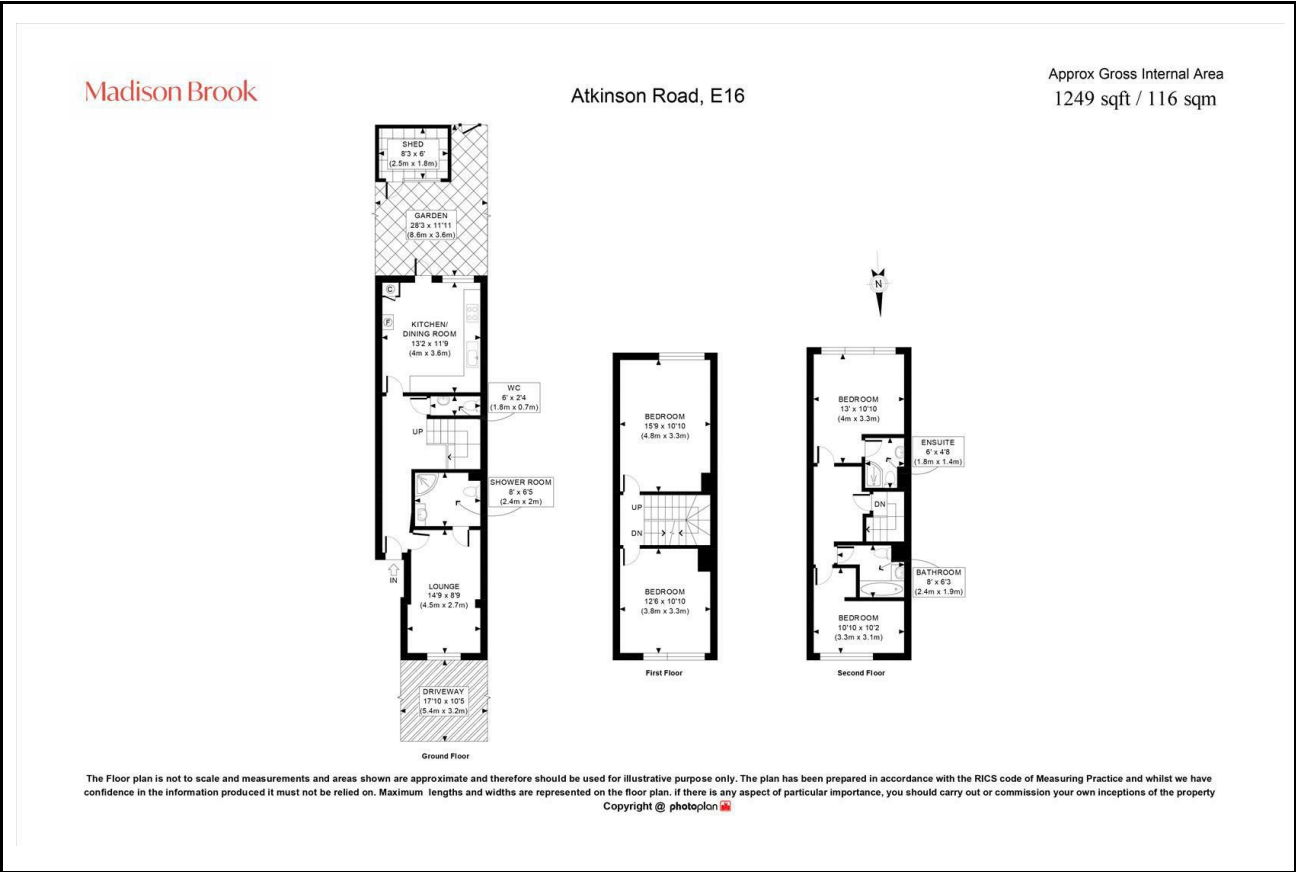
Madison Brook

Property Summary

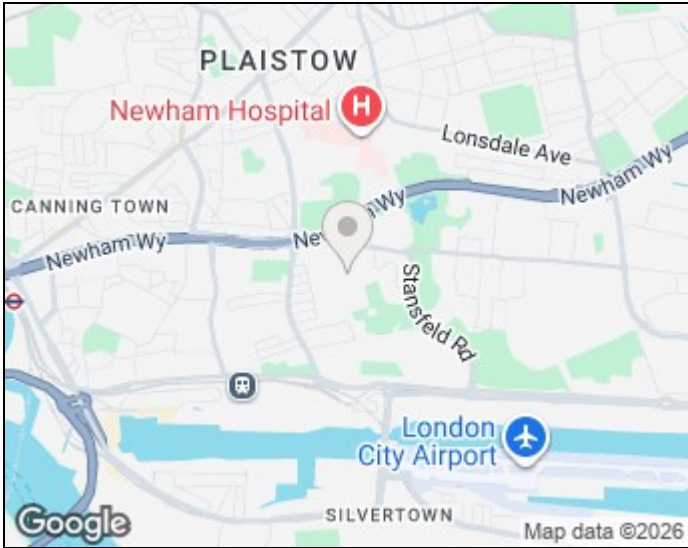
Set over three floors on Atkinson Road, E16, this furnished family home offers generous living space, a private driveway for off-street parking, and a large rear garden with outside storage. The ground floor includes a front lounge, a shower room and a separate WC, plus a kitchen/dining room opening onto the garden. Upstairs are four bedrooms (including a top-floor principal bedroom with en-suite) and a modern family bathroom. Conveniently located close to Prince Regent DLR and local bus routes.

Not suitable for sharers (landlord does not hold an HMO licence).

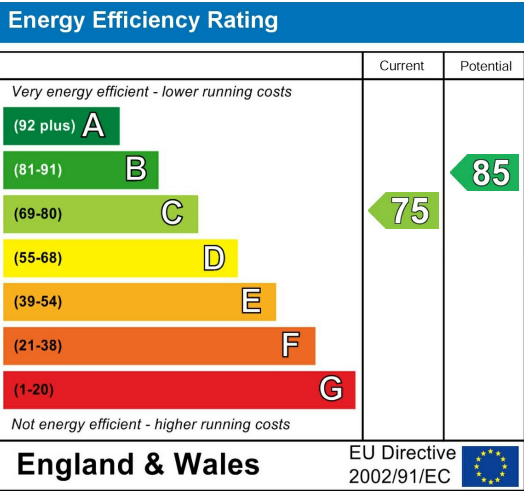
Floorplan



Area Map



Energy Efficiency Graph



These particulars, whilst believed to be accurate are set out as a general outline only for guidance and do not constitute any part of an offer or contract. Intending purchasers should not rely on them as statements of representation of fact, but must satisfy themselves by inspection or otherwise as to their accuracy. No person in this firms employment has the authority to make or give any representation or warranty in respect of the property.

Unit B 20 Western Gateway, Royal Victoria
Dock, London, E16 1BS
Tel: 020 3946 6000 Email:
docklands@madisonbrook.com
<https://madisonbrook.com/>