



Living
made
better

The Oxygen
Royal Victoria Dock, E16 1BQ



Asking Price £565,000

The Oxygen, Royal Victoria Dock, E16 1BQ

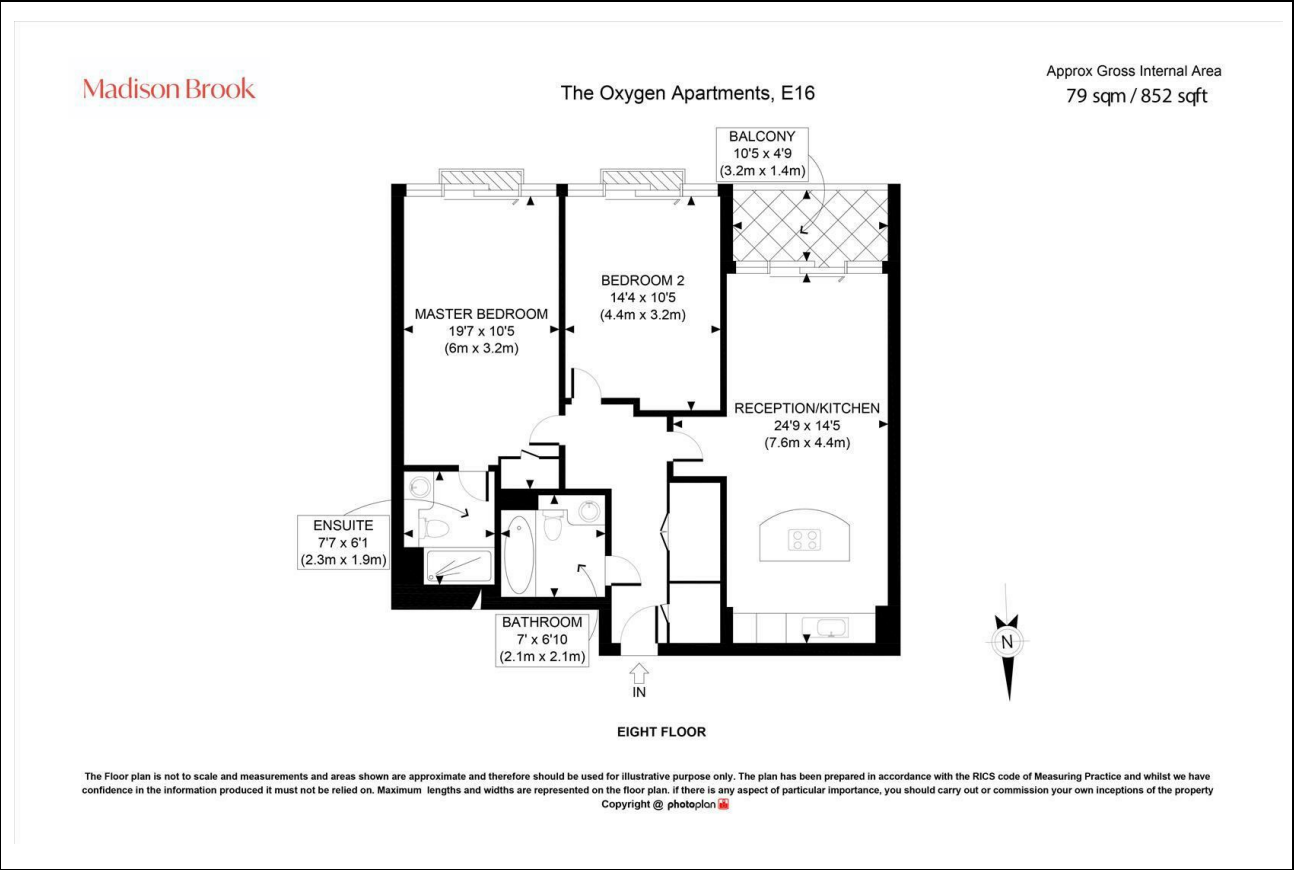
Madison Brook

Property Summary

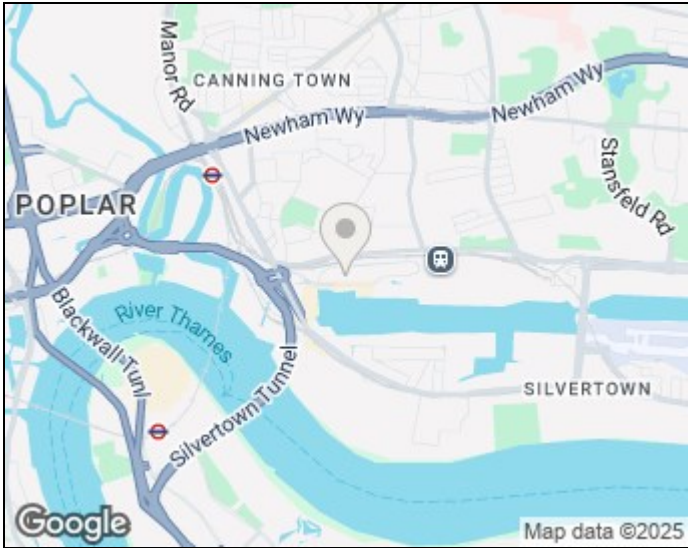
This beautifully presented two-bedroom apartment in Oxygen Apartments combines modern design with convenience, set moments from the Excel Marina. Offering a bright reception with a sleek open-plan kitchen, an en-suite principal bedroom, a second double bedroom, and an additional bathroom, the home is complemented by a private balcony with views towards Canary Wharf and the O2 Arena. Residents also benefit from secure underground parking, a concierge service, and easy access to the River Thames, Thames Barrier Park, and the wealth of amenities in the Royal Docks and Canary Wharf.

Service charge: £4,000 pa | Ground rent: £800 pa | Lease: 169 years remaining

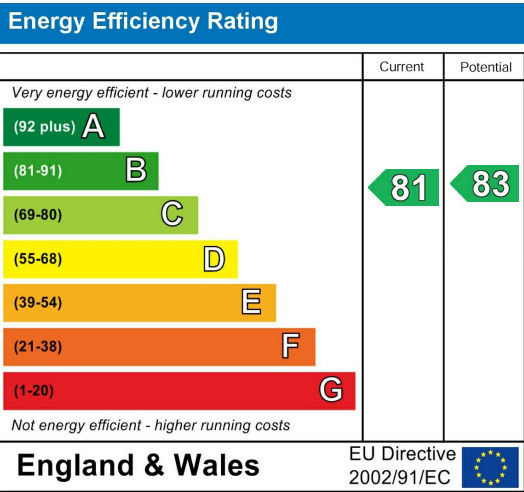
Floorplan



Area Map



Energy Efficiency Graph



These particulars, whilst believed to be accurate are set out as a general outline only for guidance and do not constitute any part of an offer or contract. Intending purchasers should not rely on them as statements of representation of fact, but must satisfy themselves by inspection or otherwise as to their accuracy. No person in this firm's employment has the authority to make or give any representation or warranty in respect of the property.

Unit B 20 Western Gateway, Royal Victoria
Dock, London, E16 1BS
Tel: 020 3946 6000 Email:
docklands@madisonbrook.com
<https://madisonbrook.com/>