

Living
made
better

Westgate Apartments
Royal Victoria Dock, E16 1BN



Asking Price £375,000

Westgate Apartments, Royal Victoria Dock, E16 1BN

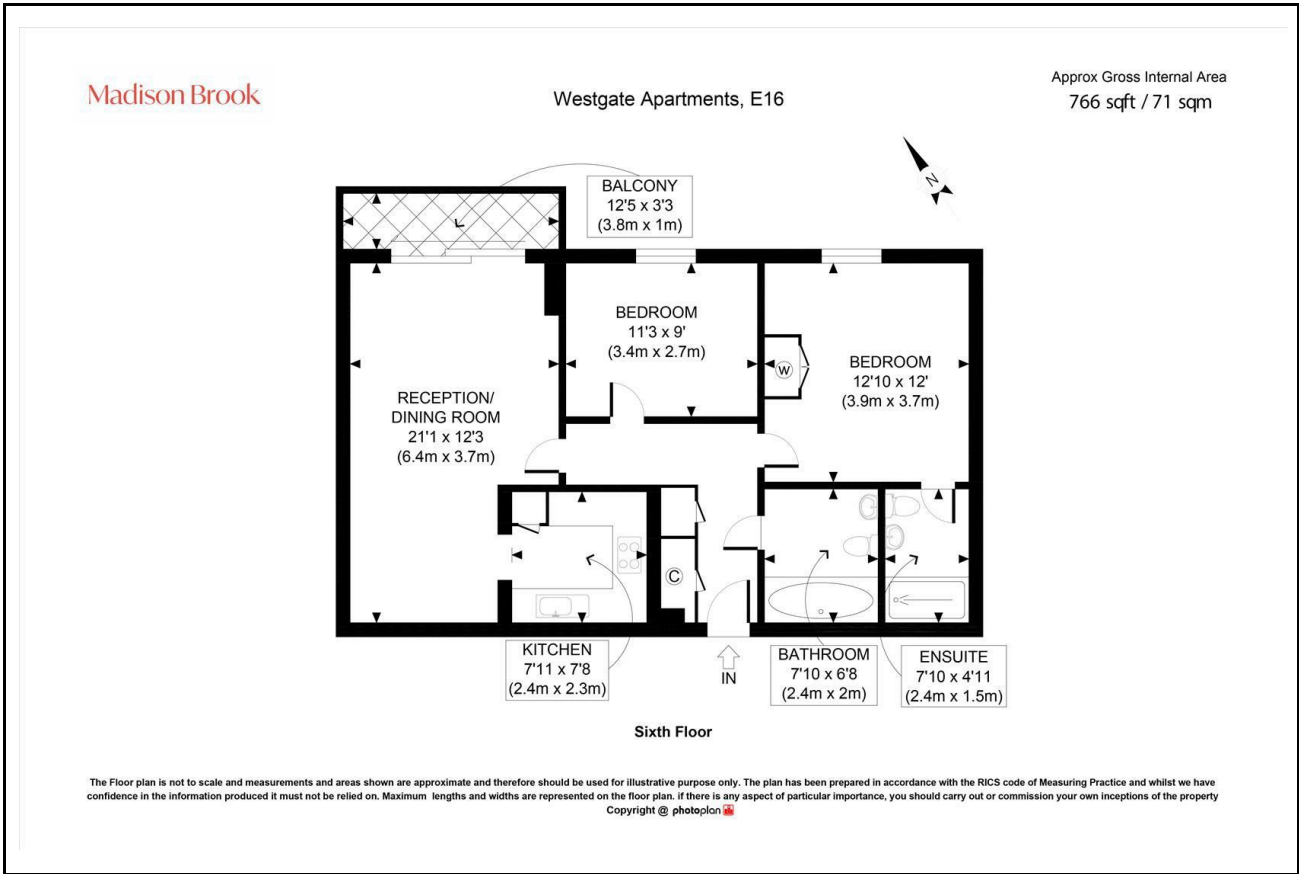
Madison Brook

Property Summary

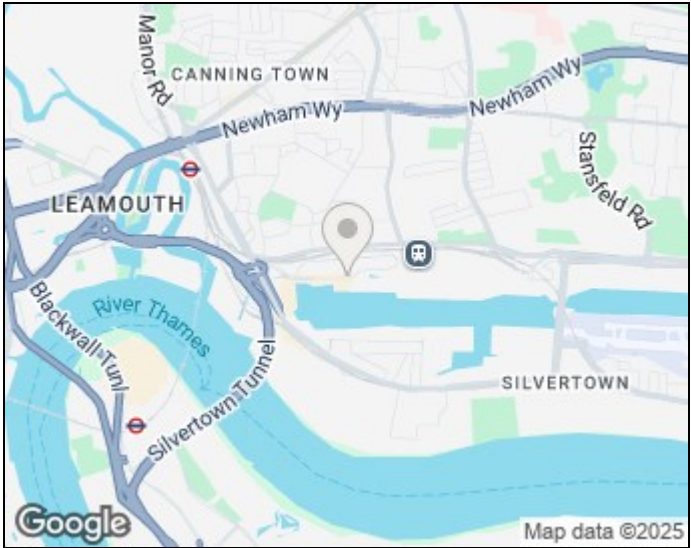
Located on the sixth floor of Westgate Apartments, this modern two-bedroom home offers 766 sq. ft. of bright and well-designed living space in the heart of Royal Victoria Dock. The apartment features a spacious open-plan living area with an integrated kitchen, opening onto a private balcony overlooking the communal garden. The master bedroom includes a built-in wardrobe and en-suite shower room, while the second bedroom is generously sized and complemented by a contemporary family bathroom. Additional benefits include ample hallway storage, a 24-hour concierge, and access to communal gardens. Ideally situated moments from Custom House Station (Elizabeth Line), the property is offered chain-free.

Service charge: £3,481 pa | Ground rent: £700 pa | Lease: 174 years remaining

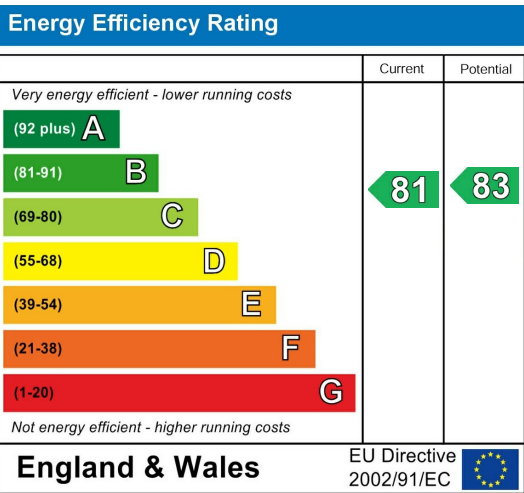
Floorplan



Area Map



Energy Efficiency Graph



Unit B 20 Western Gateway, Royal Victoria
Dock, London, E16 1BS
Tel: 020 3946 6000 Email:
docklands@madisonbrook.com
<https://madisonbrook.com/>

These particulars, whilst believed to be accurate are set out as a general outline only for guidance and do not constitute any part of an offer or contract. Intending purchasers should not rely on them as statements of representation of fact, but must satisfy themselves by inspection or otherwise as to their accuracy. No person in this firm's employment has the authority to make or give any representation or warranty in respect of the property.