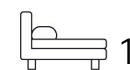




Living  
made  
better

25 Millman Street  
Holborn, WC1N 3EP



£2,800 PCM

# 25 Millman Street, Holborn, WC1N 3EP

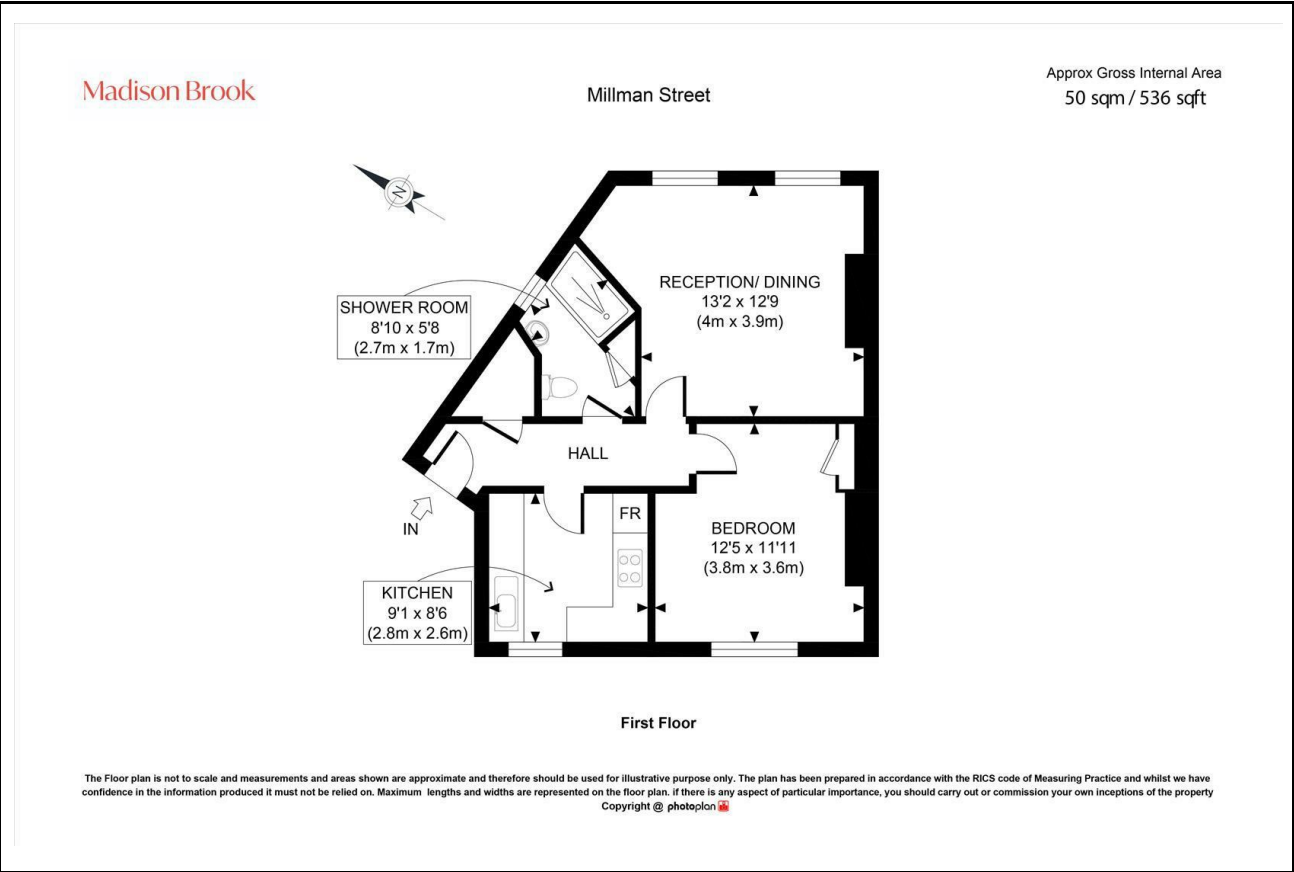
Madison Brook

## Property Summary

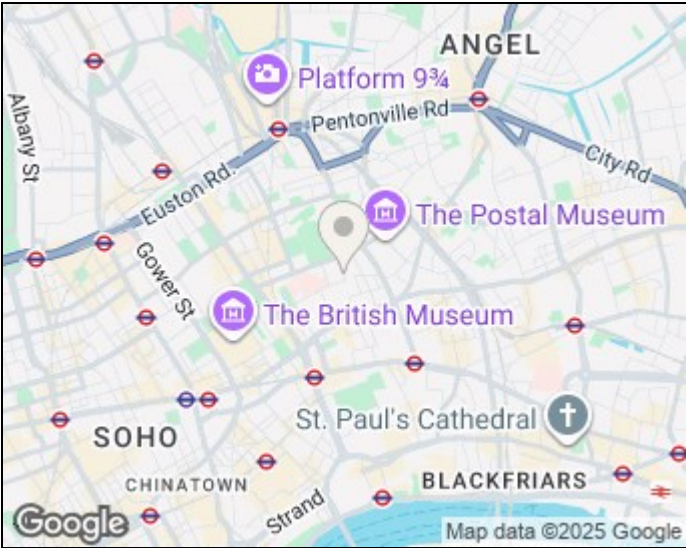
Set within a Georgian conversion on Millman Street, this well-presented first-floor one-bedroom apartment offers 536 sq. ft. of bright, well-laid-out living space. The property features a spacious reception/dining room with large windows, a separate modern kitchen, a generous double bedroom, and a contemporary shower room.

Ideally located for central London amenities, with Russell Square, Holborn, and Chancery Lane stations all within walking distance. Top-rated local schools and green spaces are close by. Street parking available via the council. Available 13 December.

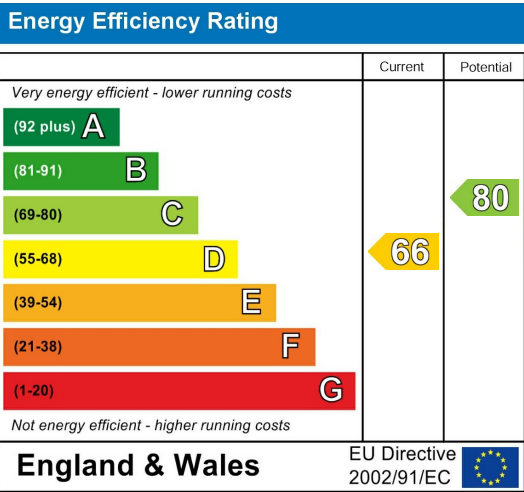
## Floorplan



## Area Map



## Energy Efficiency Graph



These particulars, whilst believed to be accurate are set out as a general outline only for guidance and do not constitute any part of an offer or contract. Intending purchasers should not rely on them as statements of representation of fact, but must satisfy themselves by inspection or otherwise as to their accuracy. No person in this firm's employment has the authority to make or give any representation or warranty in respect of the property.

Unit B 20 Western Gateway, Royal Victoria  
Dock, London, E16 1BS  
Tel: 020 3946 6000 Email:  
docklands@madisonbrook.com  
<https://madisonbrook.com/>