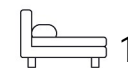




Living  
made  
better

Adriatic Apartments  
Royal Victoria Dock, E16 1BT



Guide Price £300,000

# Adriatic Apartments, Royal Victoria Dock, E16 1BT

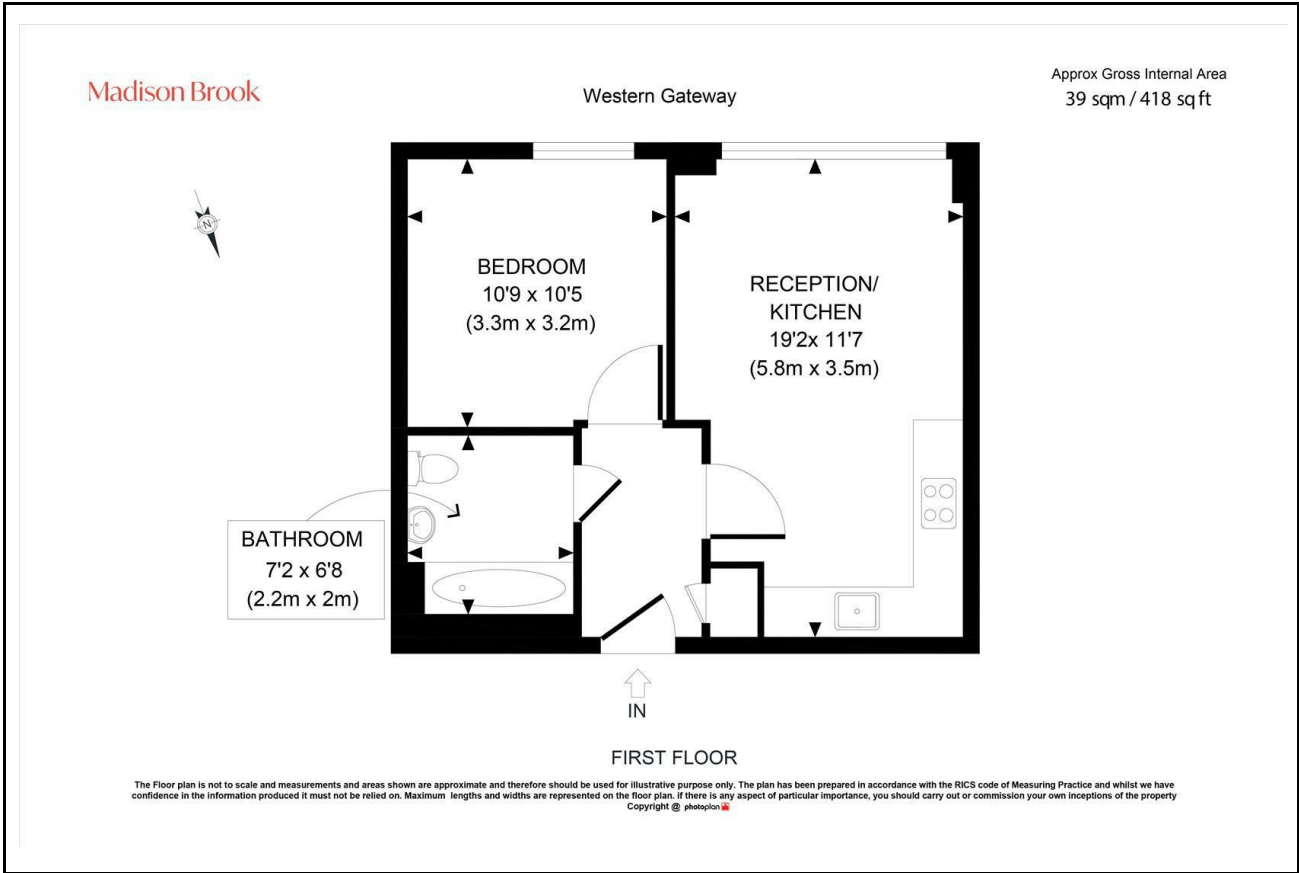
Madison Brook

### Property Summary

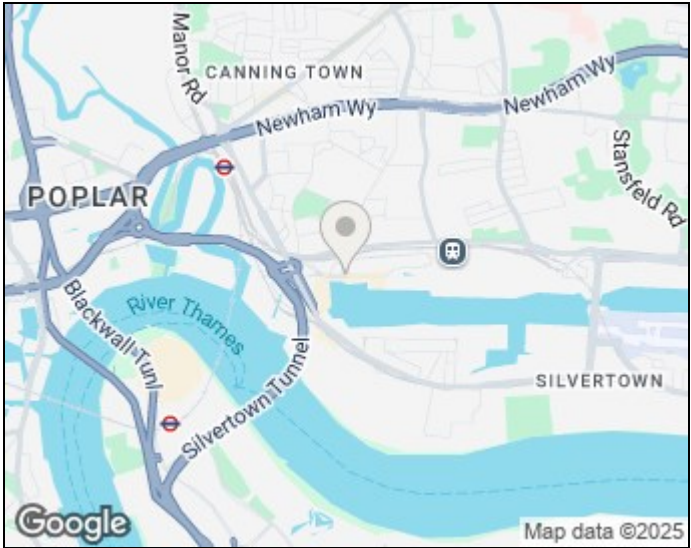
Located moments from Custom House DLR and the Elizabeth Line, this well-proportioned one-bedroom apartment is located on the first floor of the Adriatic Apartments. This property offers a bright open-plan living space and modern kitchen with integrated appliances. The spacious double bedroom includes fitted storage, while the bathroom is finished with modern fixtures. Residents enjoy the added benefit of a 24-hour concierge, access to a residents' gym, and secure underground parking.

Service charge: £4,520 pa | Ground rent: £200 pa | Lease: 134 years remaining

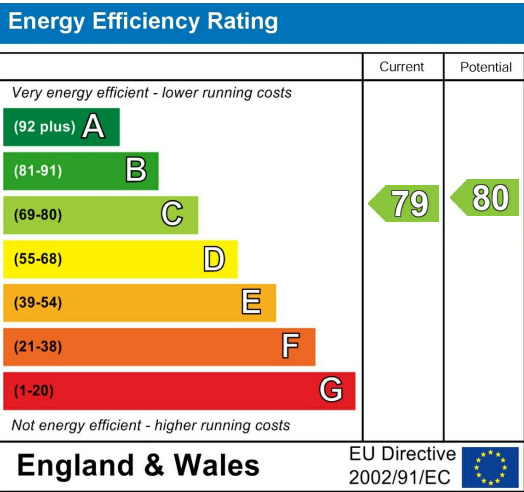
### Floorplan



### Area Map



### Energy Efficiency Graph



These particulars, whilst believed to be accurate are set out as a general outline only for guidance and do not constitute any part of an offer or contract. Intending purchasers should not rely on them as statements of representation of fact, but must satisfy themselves by inspection or otherwise as to their accuracy. No person in this firm's employment has the authority to make or give any representation or warranty in respect of the property.

Unit B 20 Western Gateway, Royal Victoria  
Dock, London, E16 1BS  
Tel: 020 3946 6000 Email:  
docklands@madisonbrook.com  
<https://madisonbrook.com/>