



Living
made
better

Wards Wharf Approach
Silvertown, E16 2EQ



3



2



1



B

£2,800 PCM

Wards Wharf Approach, Silvertown, E16 2EQ

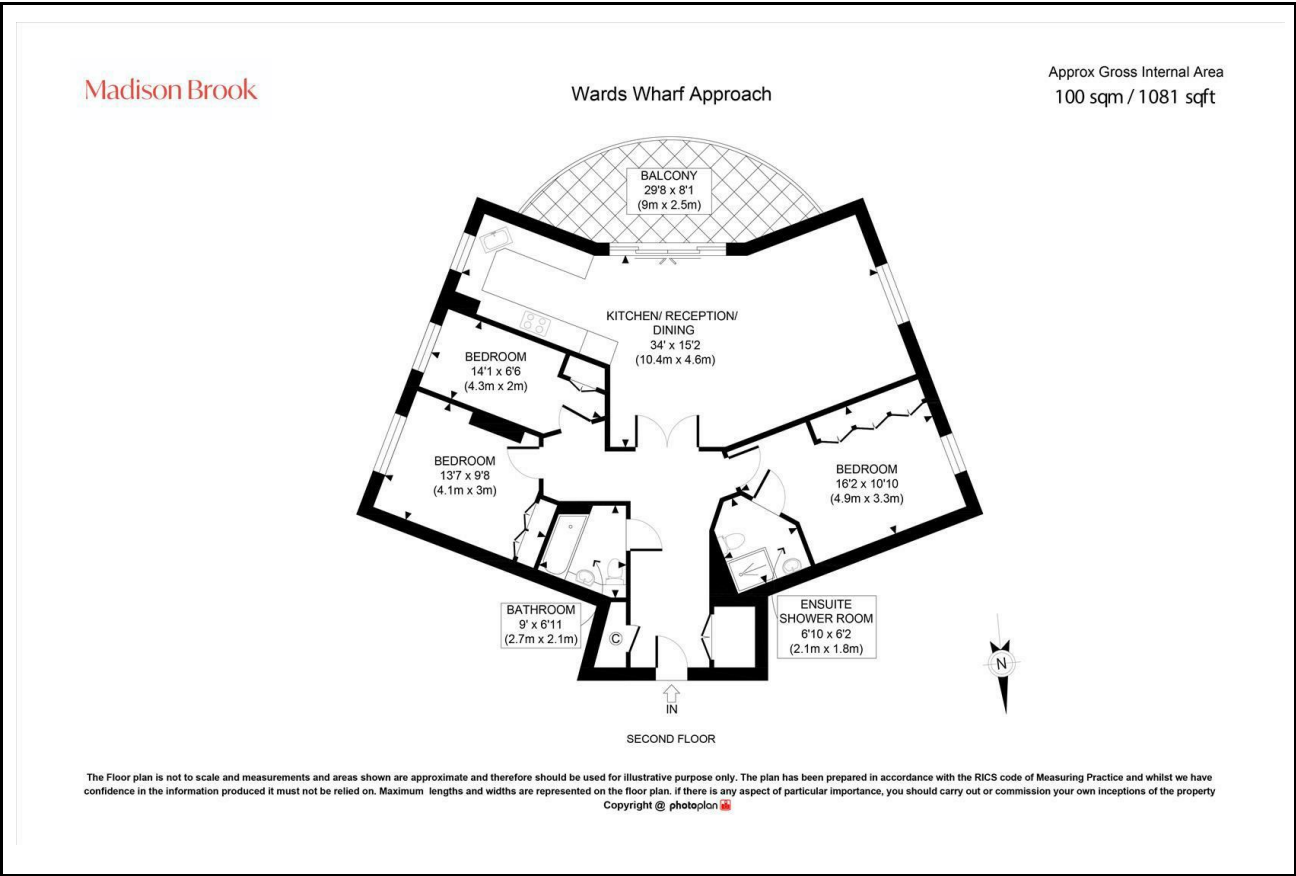
Madison Brook

Property Summary

Set within the Wards Wharf Approach development, this three-bedroom, two-bathroom apartment offers over 1,080 sq. ft. of contemporary riverside living with views across the Thames and the City. The property features an open-plan living area with a modern fitted kitchen and direct access to a private balcony. The principal bedroom includes built-in wardrobes and an en-suite, while two further bedrooms and a family bathroom complete the layout.

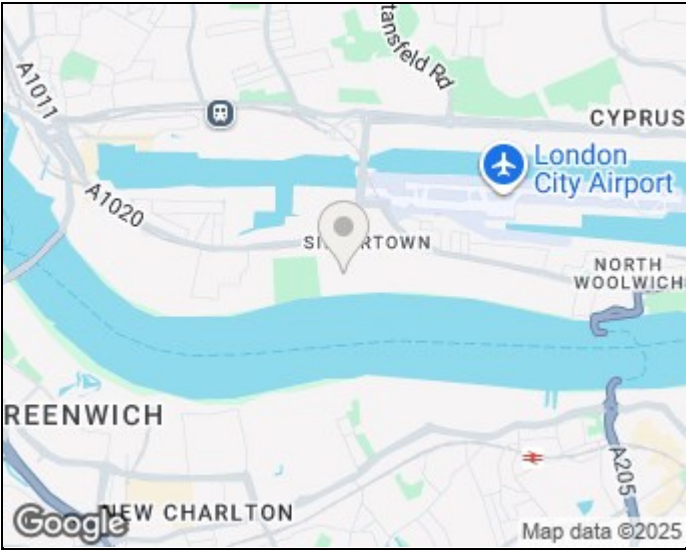
Residents benefit from two underground parking spaces, on-site facilities, including a 24-hour concierge, gym, and business centre, all within a secure gated setting moments from Pontoon Dock DLR.

Floorplan

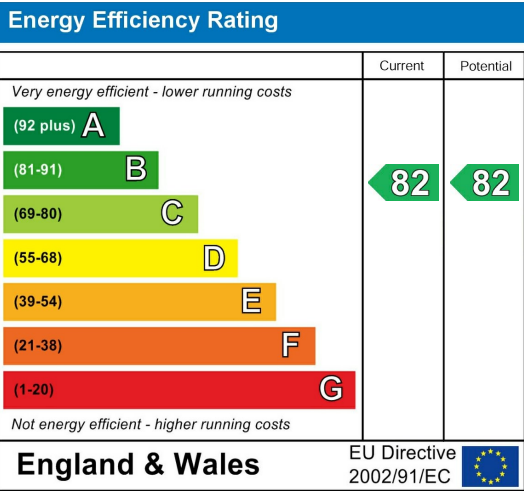


These particulars, whilst believed to be accurate are set out as a general outline only for guidance and do not constitute any part of an offer or contract. Intending purchasers should not rely on them as statements of representation of fact, but must satisfy themselves by inspection or otherwise as to their accuracy. No person in this firm's employment has the authority to make or give any representation or warranty in respect of the property.

Area Map



Energy Efficiency Graph



Unit B 20 Western Gateway, Royal Victoria
Dock, London, E16 1BS
Tel: 020 3946 6000 Email:
docklands@madisonbrook.com
<https://madisonbrook.com/>