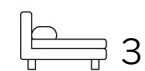


Living
made
better

Marmara Apartments
Royal Victoria Dock, E16 1AJ



£3,000 PCM

Marmara Apartments, Royal Victoria Dock, E16 1AJ

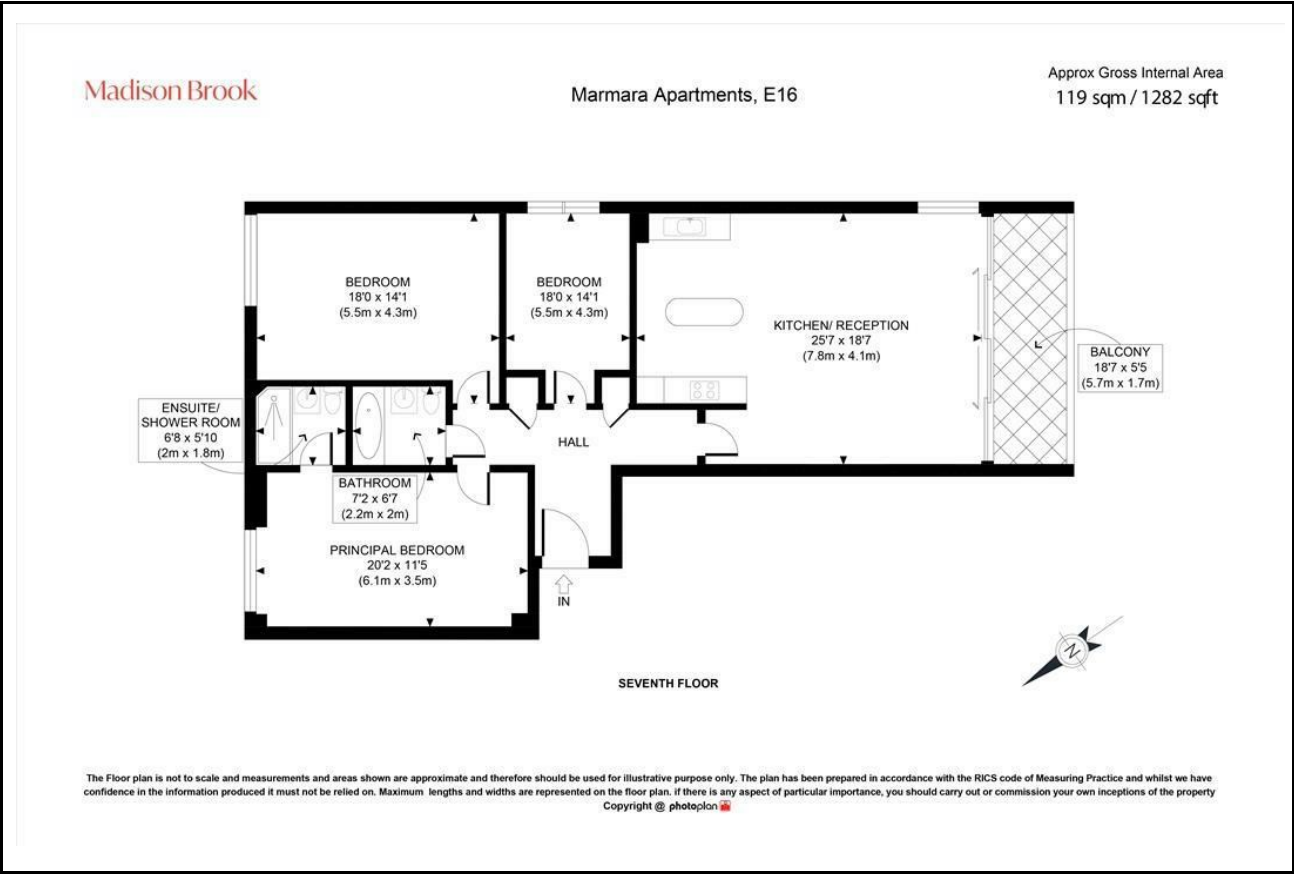
Madison Brook

Property Summary

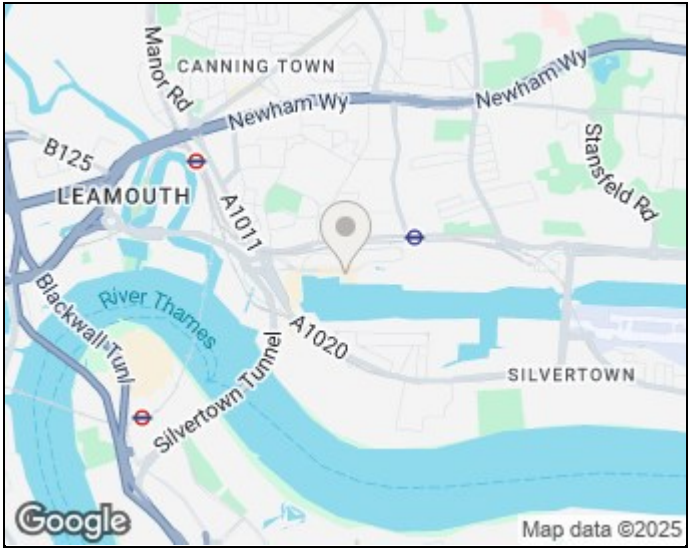
A spacious three-bedroom, two-bathroom apartment in Marmara Apartments, Royal Victoria Dock, offering 1,282 sq. ft. of modern living space. Features include a bright and expansive open-plan reception designed for modern living and seamlessly integrates with a fully fitted kitchen, a private south-facing balcony, en-suite principal bedroom, and access to a residents' gym and 24-hour concierge.

Ideally located for Royal Victoria DLR, Custom House, and Canning Town stations

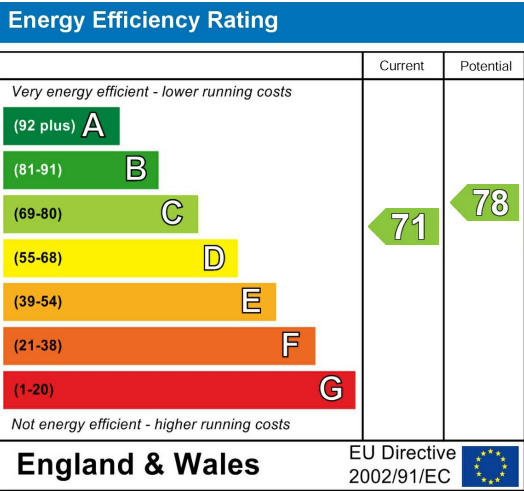
Floorplan



Area Map



Energy Efficiency Graph



These particulars, whilst believed to be accurate are set out as a general outline only for guidance and do not constitute any part of an offer or contract. Intending purchasers should not rely on them as statements of representation of fact, but must satisfy themselves by inspection or otherwise as to their accuracy. No person in this firms employment has the authority to make or give any representation or warranty in respect of the property.

Unit B 20 Western Gateway, Royal Victoria
Dock, London, E16 1BS
Tel: 020 3946 6000 Email:
docklands@madisonbrook.com
<https://madisonbrook.com/>