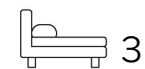


Living  
made  
better

Torres Square  
Isle of Dogs, E14 3QN



Asking Price £825,000

Torres Square, Isle of Dogs, E14 3QN

Madison Brook

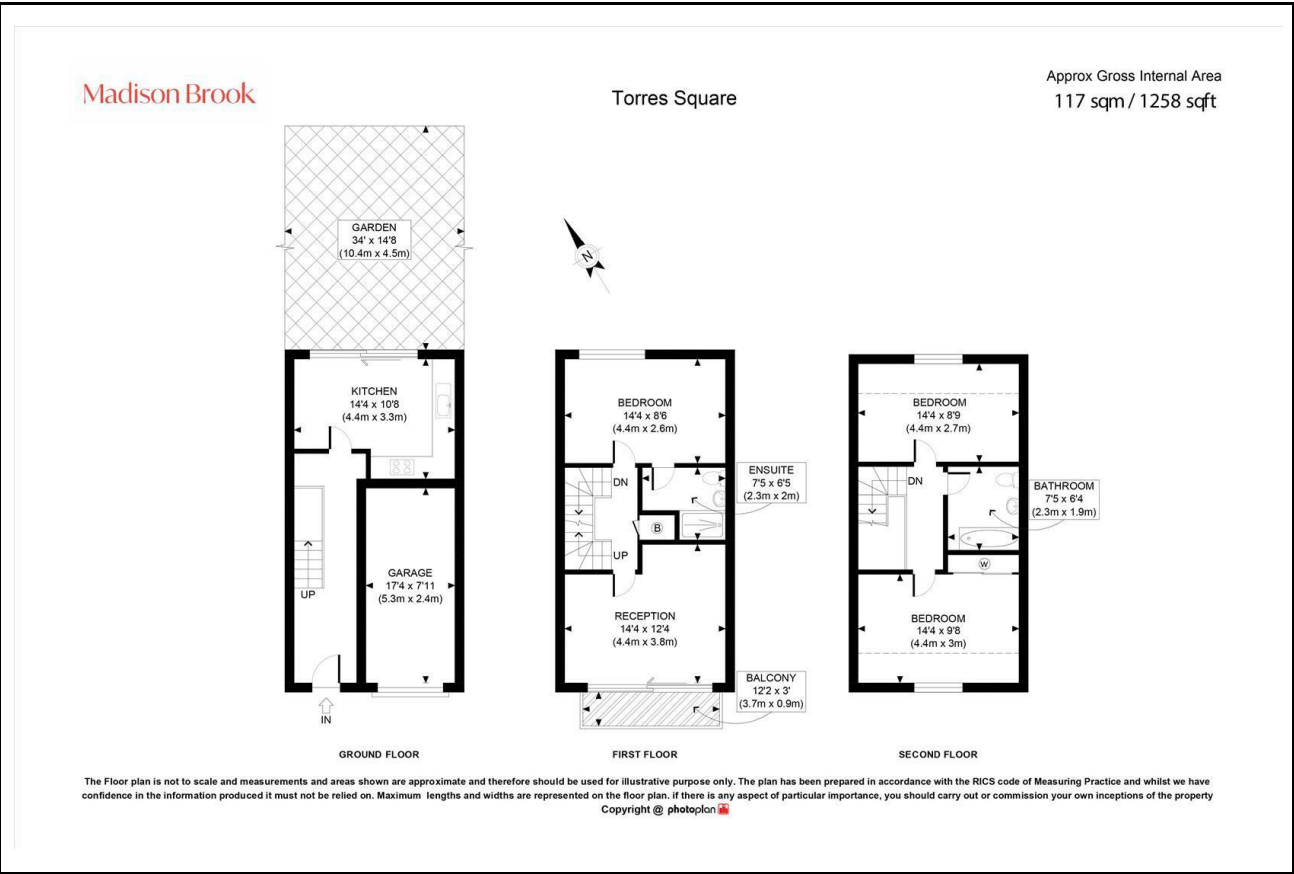
Property Summary

A beautifully finished three-bedroom townhouse in a gated development near the River Thames. Set across three floors and approx. 1,258 sq. ft., the home includes a modern kitchen opening to a private rear garden, a first-floor reception room with balcony, and three well-sized bedrooms including a principal with en suite.

Further highlights include a private balcony with slight river views, integrated garage, and generous storage throughout. Located close to Mudchute DLR and the amenities of Canary Wharf.

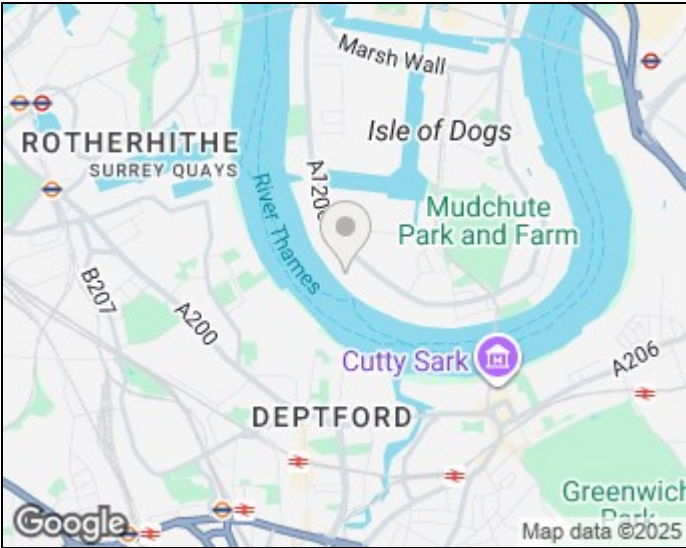
Freehold. Annual service charge approx. £715.

Floorplan

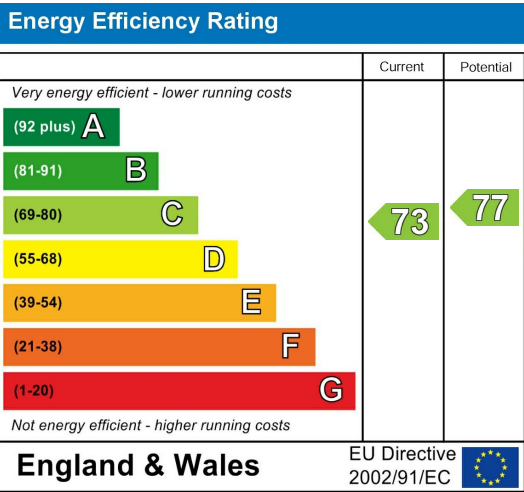


These particulars, whilst believed to be accurate are set out as a general outline only for guidance and do not constitute any part of an offer or contract. Intending purchasers should not rely on them as statements of representation of fact, but must satisfy themselves by inspection or otherwise as to their accuracy. No person in this firms employment has the authority to make or give any representation or warranty in respect of the property.

Area Map



Energy Efficiency Graph



Unit B 20 Western Gateway, Royal Victoria  
Dock, London, E16 1BS  
Tel: 020 3946 6000 Email:  
docklands@madisonbrook.com  
<https://madisonbrook.com/>