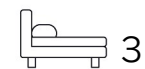


Living  
made  
better

Ebenezer Mussel House  
Bethnal Green, E2 9NX



£3,250 PCM



# Ebenezer Mussel House, Bethnal Green, E2 9NX

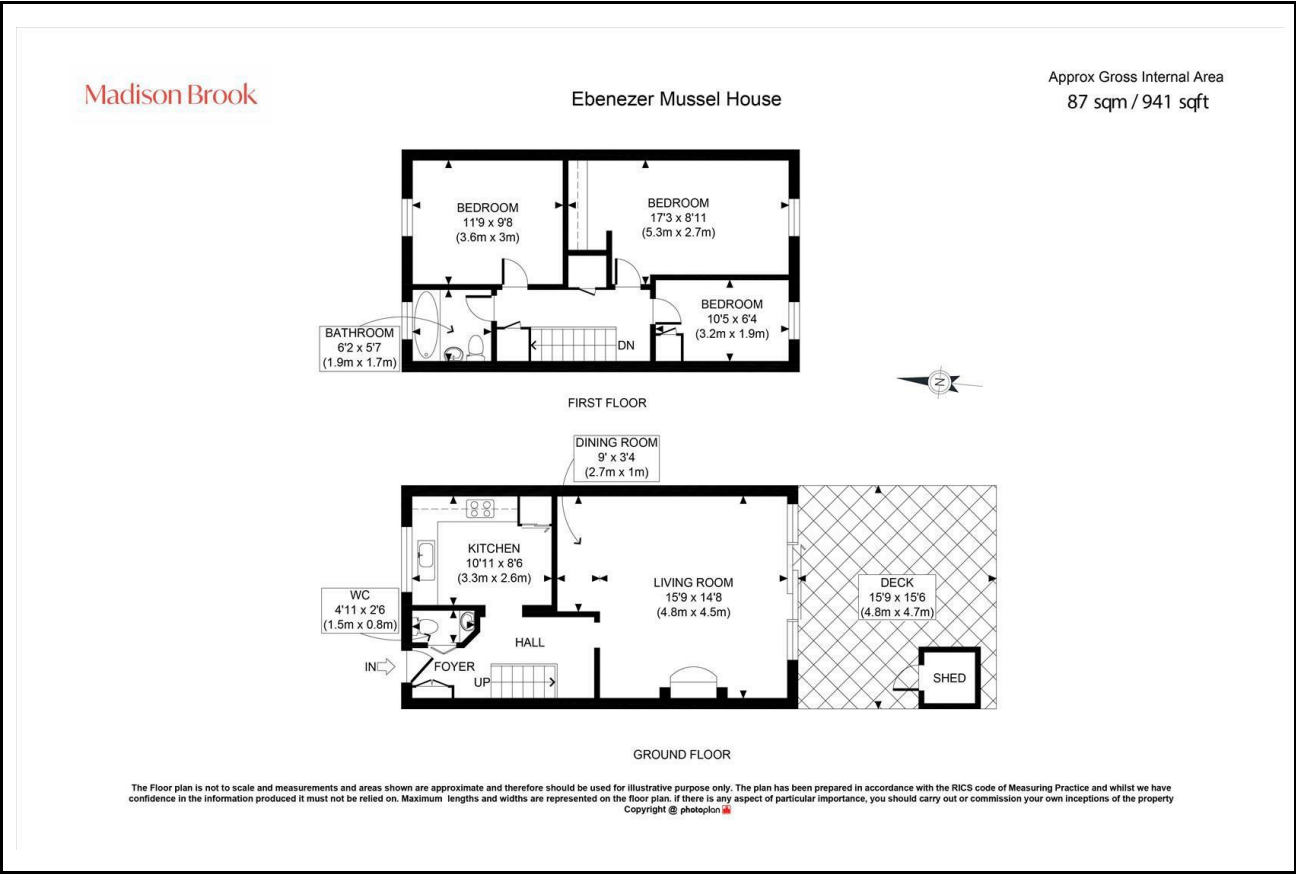
Madison Brook

## Property Summary

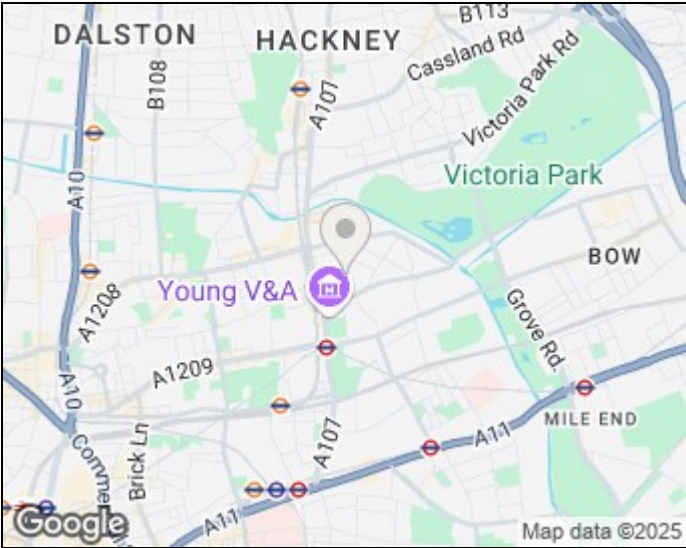
This well-kept three-bedroom mid-terraced house is perfectly located in Bethnal Green. The ground floor features a separate fitted kitchen, a handy downstairs W/C, and a spacious reception room with a functioning fireplace opening onto a south-facing decked garden ideal for relaxing or entertaining. Upstairs, there are two double bedrooms, a versatile third bedroom or office, and a newly refurbished bathroom. Heating and hot water are included in the rent, and a private off-street parking space adds convenience. Just moments from Bethnal Green Central Line and Cambridge Heath Overground, this property is perfect for commuters. Victoria Park and local amenities are also nearby.

Please note: This property is not suitable for sharers as the landlord does not hold an HMO license.

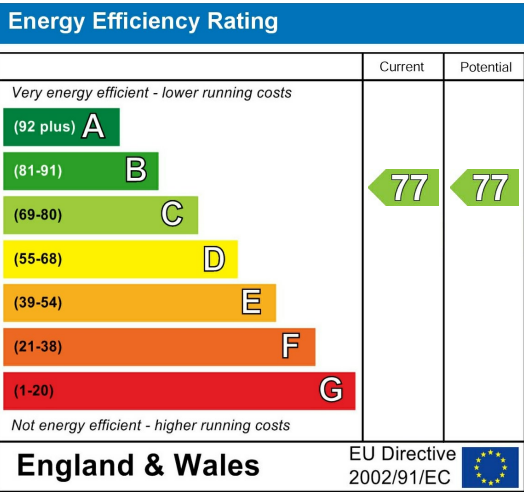
## Floorplan



## Area Map



## Energy Efficiency Graph



These particulars, whilst believed to be accurate are set out as a general outline only for guidance and do not constitute any part of an offer or contract. Intending purchasers should not rely on them as statements of representation of fact, but must satisfy themselves by inspection or otherwise as to their accuracy. No person in this firm's employment has the authority to make or give any representation or warranty in respect of the property.

Unit B 20 Western Gateway, Royal Victoria  
Dock, London, E16 1BS  
Tel: 020 3946 6000 Email:  
docklands@madisonbrook.com  
<https://madisonbrook.com/>