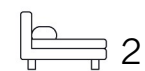




Living
made
better

Capital East Apartments
Royal Victoria Dock, E16 1AS



£2,750 PCM

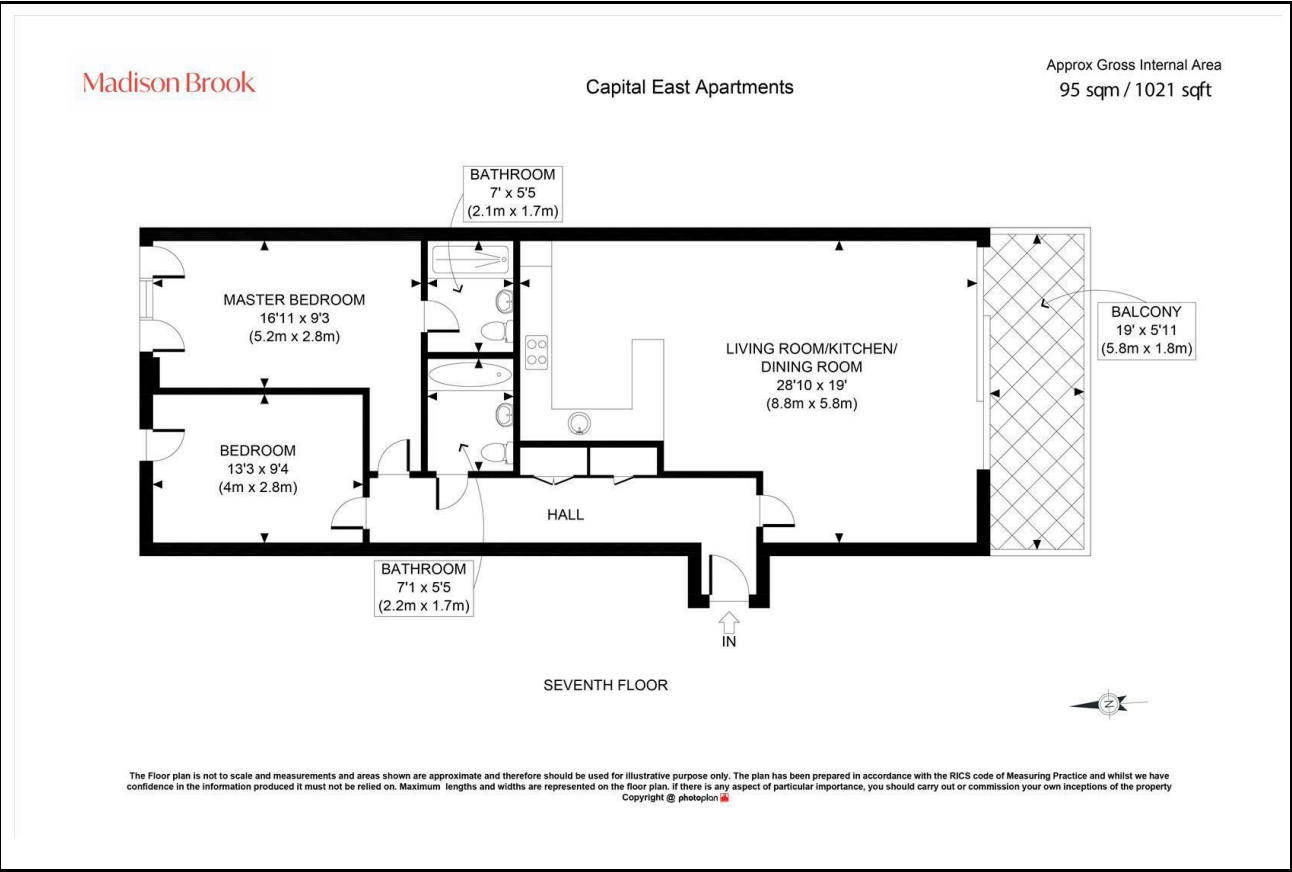
Capital East Apartments, Royal Victoria Dock. F16 1AS

Property Summary

A spacious two-bedroom, two-bathroom apartment set on the seventh floor of Capital East Apartments, offering over 1,000 sq. ft. of bright internal space and panoramic dockside views. The open-plan reception/kitchen opens onto a southwest-facing balcony, with generous glazing allowing for excellent light throughout. The principle bedroom features an en-suite and fitted wardrobes, while a second double bedroom and a stylish main bathroom complete the layout.

Residents benefit from 24-hour concierge, a private gym, and secure gated parking. Located moments from Royal Victoria DLR and the Elizabeth Line at Custom House.

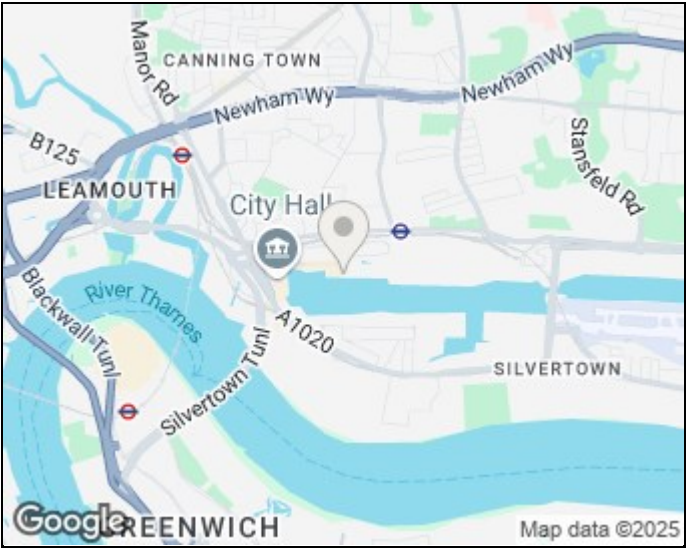
Floorplan



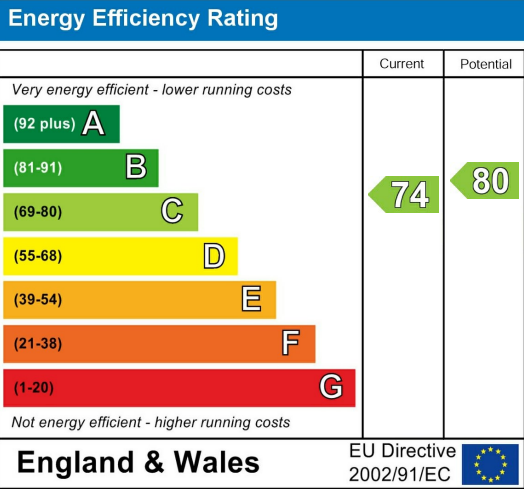
These particulars, whilst believed to be accurate are set out as a general outline only for guidance and do not constitute any part of an offer or contract. Intending purchasers should not rely on them as statements of representation of fact, but must satisfy themselves by inspection or otherwise as to their accuracy. No person in this firms employment has the authority to make or give any representation or warranty in respect of the property.

Madison Brook

Area Map



Energy Efficiency Graph



Unit B 20 Western Gateway, Royal Victoria
Dock, London, E16 1BS
Tel: 020 3946 6000 Email:
docklands@madisonbrook.com
<https://madisonbrook.com/>