



Living
made
better

Adriatic Apartments
Royal Victoria Dock, E16 1BU



Asking Price £290,000

Adriatic Apartments, Royal Victoria Dock, E16 1BU

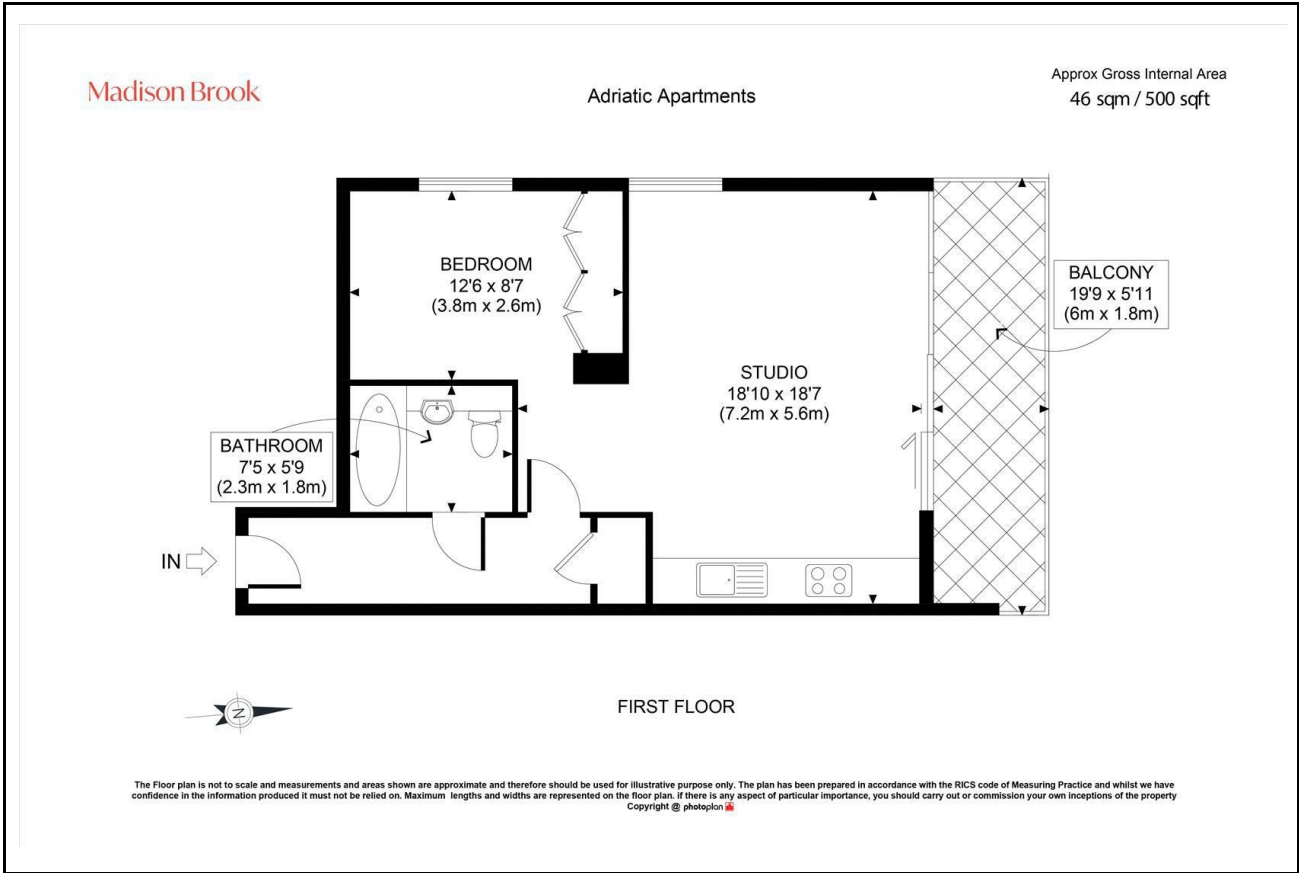
Madison Brook

Property Summary

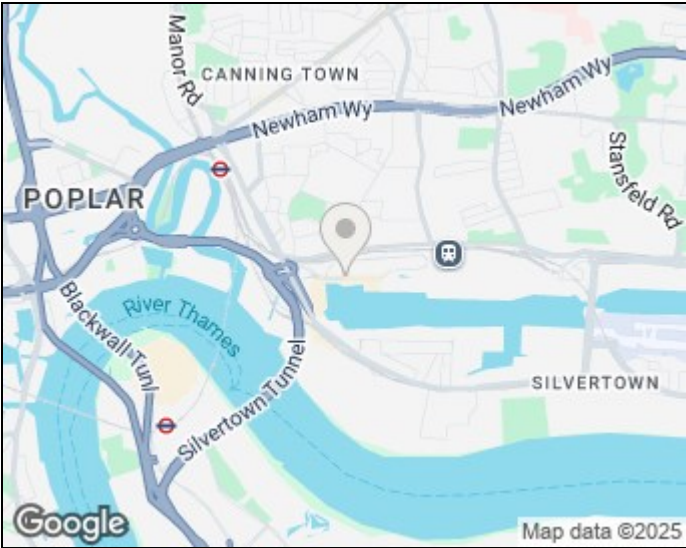
Spanning 500 sq. ft., this spacious studio in Capital East overlooks a quiet internal courtyard and offers access to 24-hour concierge and residents' gym. Well maintained and offered chain-free, the property features a large open-plan layout with fitted kitchen, a semi-separated sleeping area, and a full-size bathroom. A private patio enhances the sense of space and light.

Ideally located for transport, with Royal Victoria DLR and the Elizabeth Line at Custom House just a short walk away.

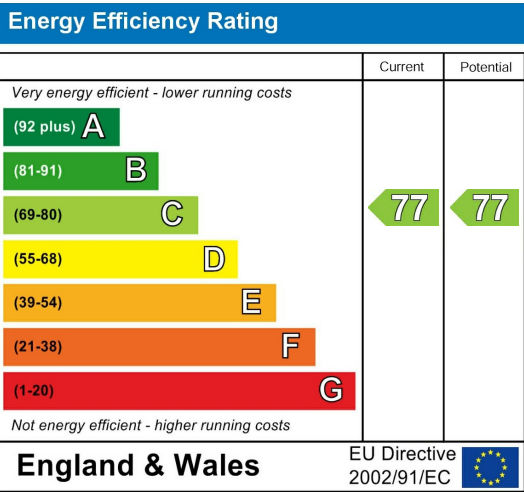
Floorplan



Area Map



Energy Efficiency Graph



These particulars, whilst believed to be accurate are set out as a general outline only for guidance and do not constitute any part of an offer or contract. Intending purchasers should not rely on them as statements of representation of fact, but must satisfy themselves by inspection or otherwise as to their accuracy. No person in this firms employment has the authority to make or give any representation or warranty in respect of the property.

Unit B 20 Western Gateway, Royal Victoria
Dock, London, E16 1BS
Tel: 020 3946 6000 Email:
docklands@madisonbrook.com
<https://madisonbrook.com/>