



Living
made
better

Adriatic Apartments
Royal Victoria Dock, E16 1BT



Asking Price £550,000

Adriatic Apartments, Royal Victoria Dock, E16 1BT

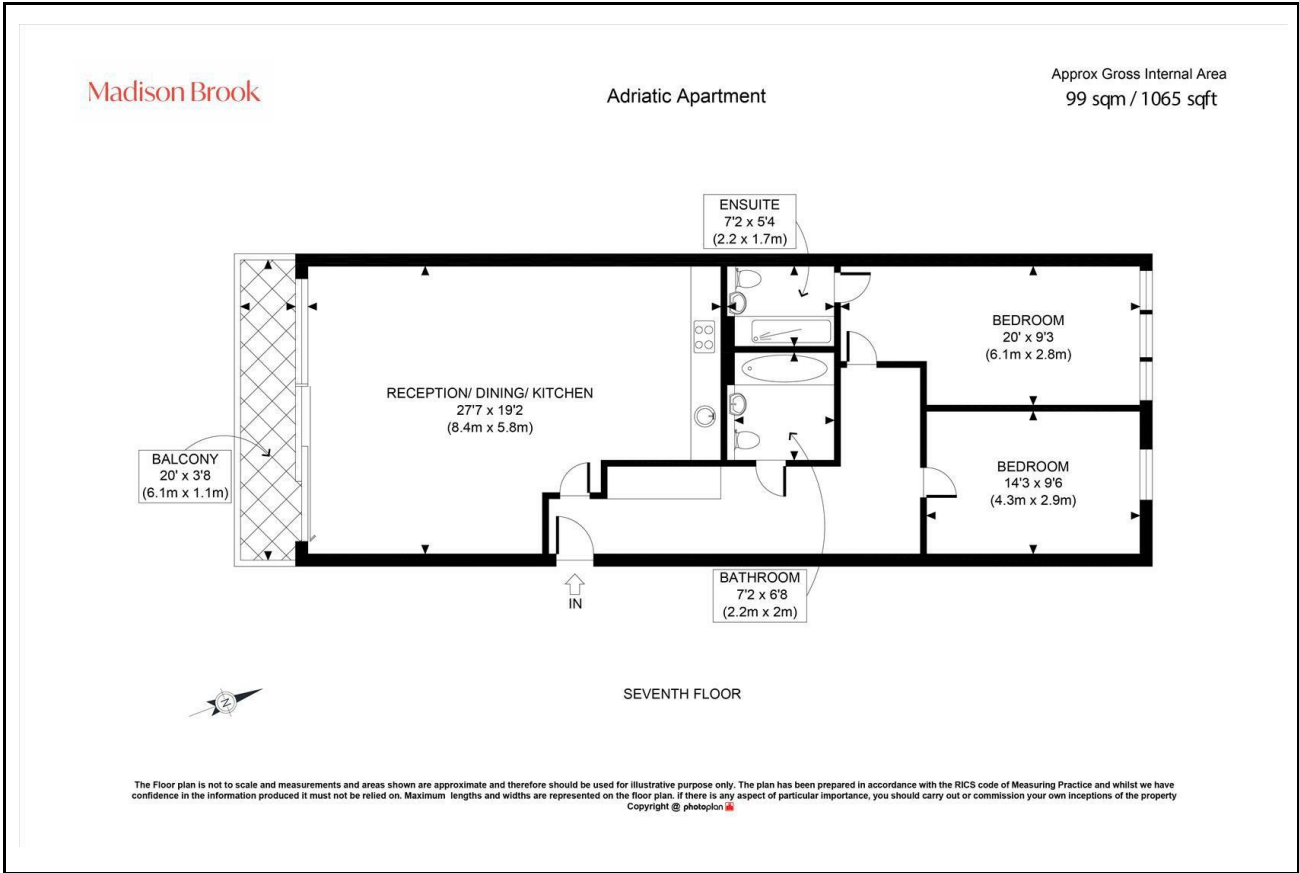
Madison Brook

Property Summary

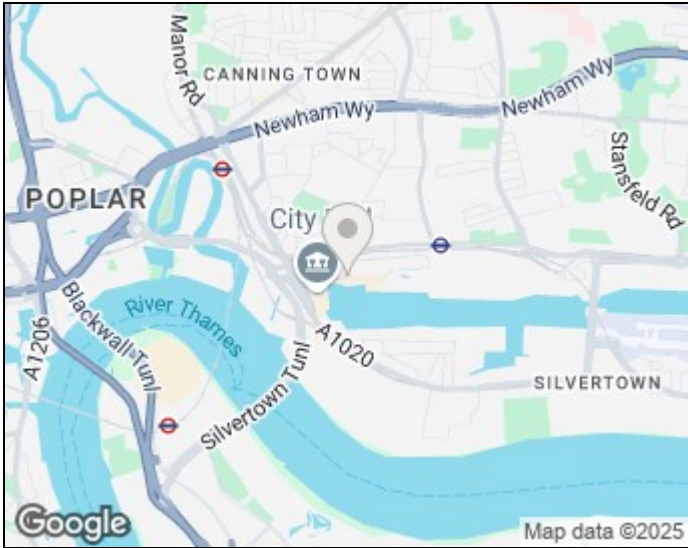
Located on the 7th floor of Adriatic Apartments, this spacious two-bedroom, two-bathroom home boasts stunning south-facing views over the Dock, O2 Arena and City skyline. Featuring a large open-plan living/kitchen space, private balcony, en-suite to principal bedroom, and secure parking, the apartment is well maintained throughout.

Residents benefit from 24-hour concierge, a resident gym, and excellent access to Royal Victoria DLR, the Elizabeth Line and Emirates Cable Car.

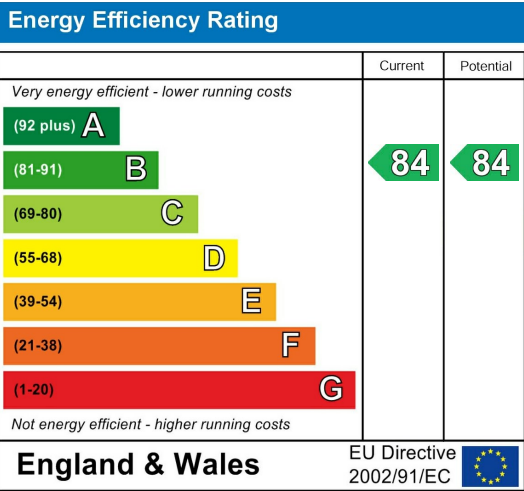
Floorplan



Area Map



Energy Efficiency Graph



These particulars, whilst believed to be accurate are set out as a general outline only for guidance and do not constitute any part of an offer or contract. Intending purchasers should not rely on them as statements of representation of fact, but must satisfy themselves by inspection or otherwise as to their accuracy. No person in this firms employment has the authority to make or give any representation or warranty in respect of the property.

Unit B 20 Western Gateway, Royal Victoria
Dock, London, E16 1BS
Tel: 020 3946 6000 Email:
docklands@madisonbrook.com
<https://madisonbrook.com/>