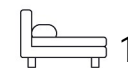


Living
made
better

Corson House
London City Island, E14 0TQ



Offers In Excess Of £475,000

Corson House, London City Island, E14 0TQ

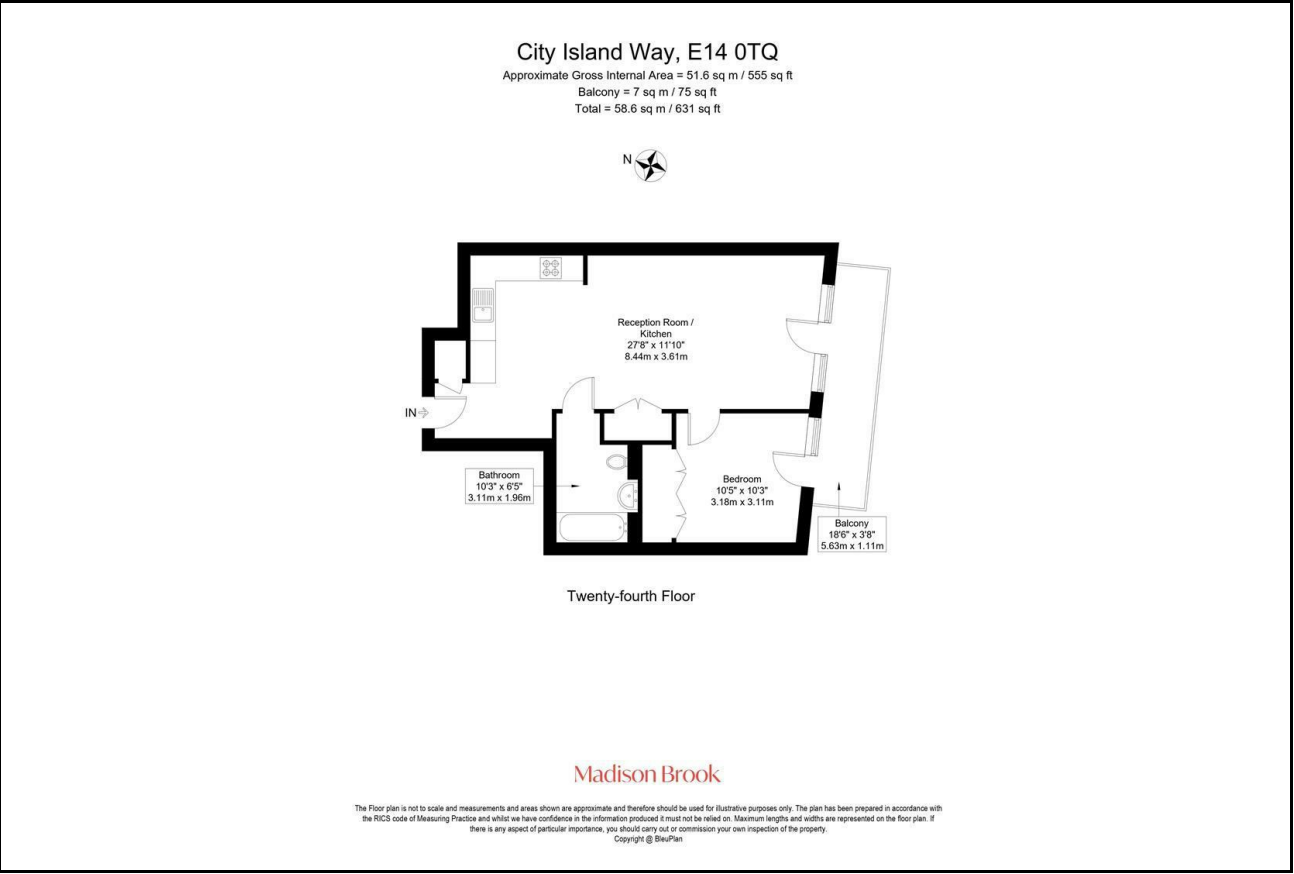
Madison Brook

Property Summary

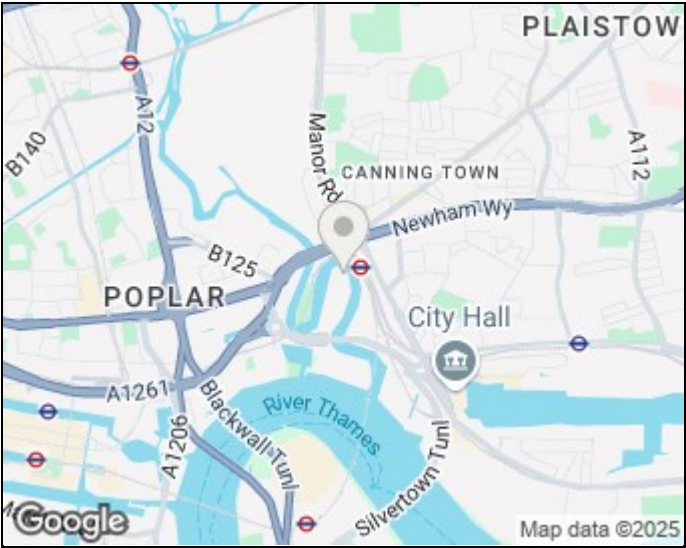
Situated on the 24th floor of London City Island, this one-bedroom apartment offers 631 sq. ft. of high-spec living space and a private east-facing balcony with river views. The bright open-plan kitchen/reception area is perfect for entertaining, while the spacious bedroom features direct balcony access. A sleek modern bathroom and generous storage complete the interior.

Residents enjoy access to two gyms, a spa, a heated outdoor pool, communal gardens, a rooftop sports court, and a 24-hour concierge. Just a short walk from Canning Town Station.

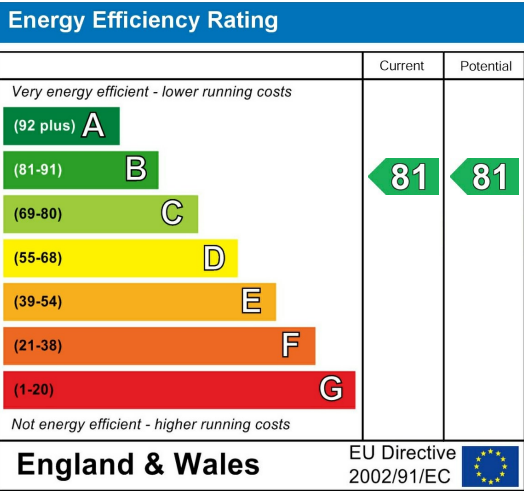
Floorplan



Area Map



Energy Efficiency Graph



These particulars, whilst believed to be accurate are set out as a general outline only for guidance and do not constitute any part of an offer or contract. Intending purchasers should not rely on them as statements of representation of fact, but must satisfy themselves by inspection or otherwise as to their accuracy. No person in this firm's employment has the authority to make or give any representation or warranty in respect of the property.

Unit B 20 Western Gateway, Royal Victoria
Dock, London, E16 1BS
Tel: 020 3946 6000 Email:
docklands@madisonbrook.com
<https://madisonbrook.com/>