



Living
made
better

Bagshaw Building
Canary Wharf, E14 9DY



£2,400 PCM

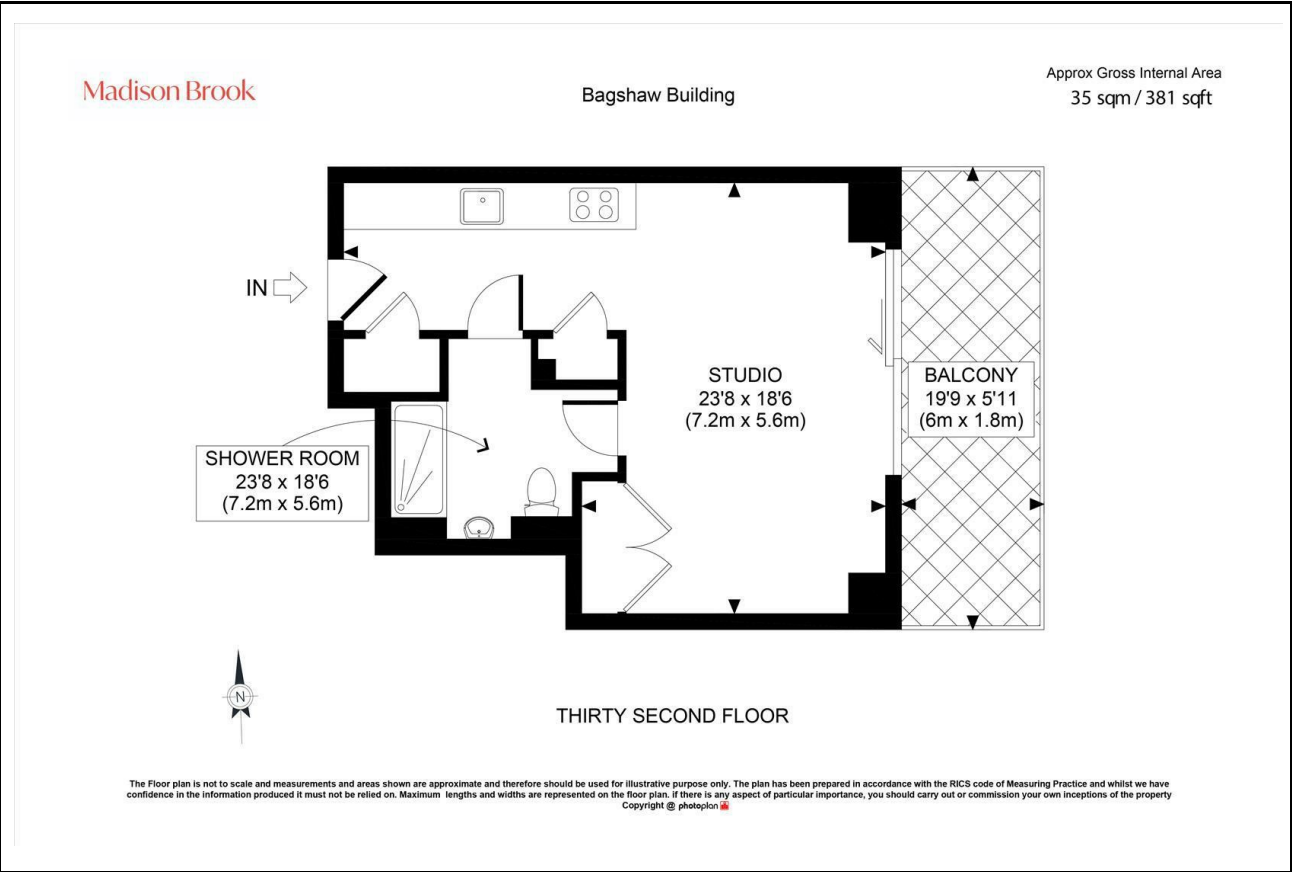
Bagshaw Building, Canary Wharf, E14 9DY

Madison Brook

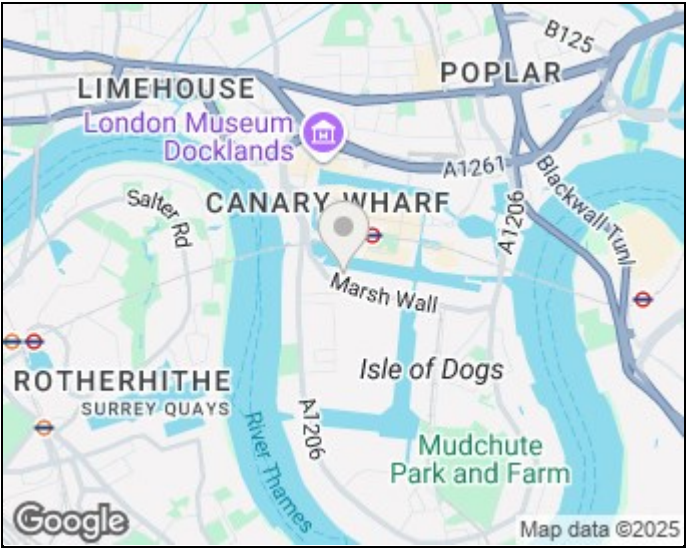
Property Summary

Positioned on the 32nd floor of Bagshaw Building, this bright and modern studio apartment spans 381 sq. ft. and includes a generous private balcony with sweeping views. The open-plan layout features a sleek integrated kitchen and a contemporary shower room, while residents enjoy access to luxury on-site amenities including a 53rd-floor sky lounge, gym, outdoor pool, cinema room, and 24-hour concierge. South Quay DLR is just moments away for fast connections across London.

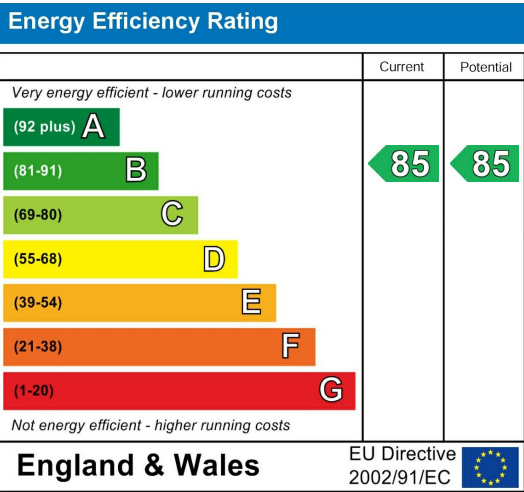
Floorplan



Area Map



Energy Efficiency Graph



These particulars, whilst believed to be accurate are set out as a general outline only for guidance and do not constitute any part of an offer or contract. Intending purchasers should not rely on them as statements of representation of fact, but must satisfy themselves by inspection or otherwise as to their accuracy. No person in this firms employment has the authority to make or give any representation or warranty in respect of the property.

Unit B 20 Western Gateway, Royal Victoria
Dock, London, E16 1BS
Tel: 020 3946 6000 Email:
docklands@madisonbrook.com
<https://madisonbrook.com/>