

Living  
made  
better

James Cook Building  
Silvertown, E16 2YY



Offers In The Region Of £675,000

# James Cook Building, Silvertown, E16 2YY

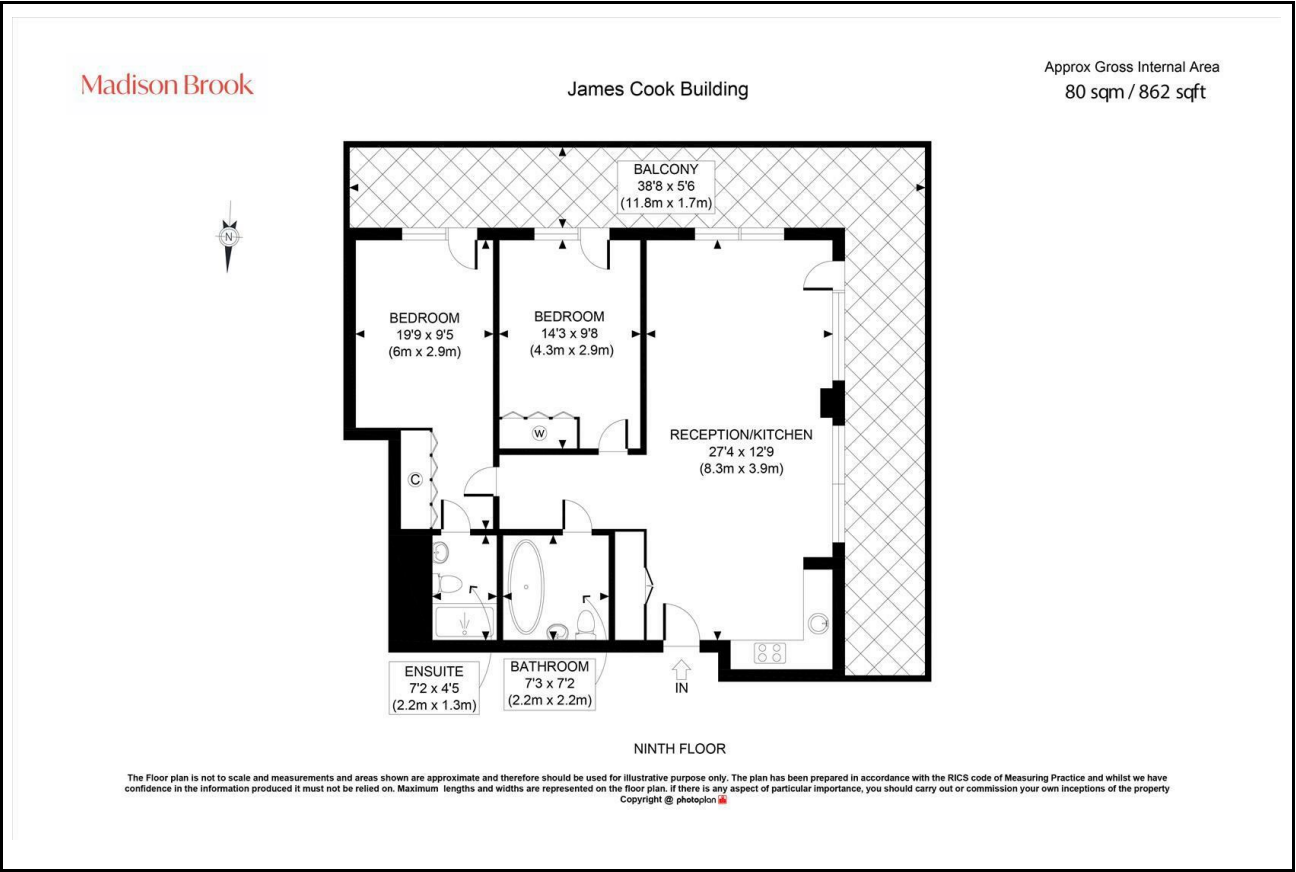
Madison Brook

## Property Summary

Located on the ninth floor of the James Cook Building, this spacious two-bedroom, two-bathroom apartment spans 862 sq. ft. and features a bright open-plan layout with a large wraparound private balcony.

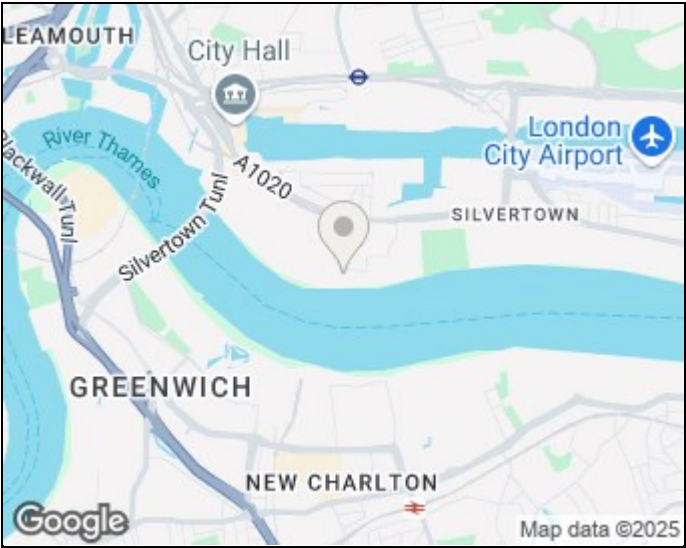
The reception and kitchen area offers ample natural light and direct balcony access, while the principal bedroom benefits from an en-suite. A second bedroom and a separate family bathroom complete the layout, with additional storage in the hallway. The property includes lift access and secure entry. Ideally positioned just moments from West Silvertown DLR, and within walking distance of Canning Town Underground Station and the Elizabeth Line at Custom House.

## Floorplan

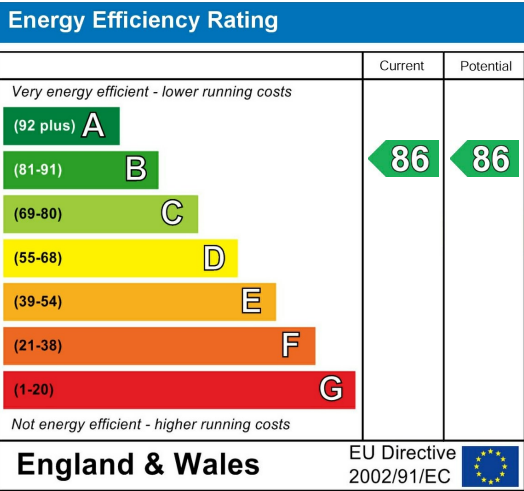


These particulars, whilst believed to be accurate are set out as a general outline only for guidance and do not constitute any part of an offer or contract. Intending purchasers should not rely on them as statements of representation of fact, but must satisfy themselves by inspection or otherwise as to their accuracy. No person in this firms employment has the authority to make or give any representation or warranty in respect of the property.

## Area Map



## Energy Efficiency Graph



Unit B 20 Western Gateway, Royal Victoria  
Dock, London, E16 1BS  
Tel: 020 3946 6000 Email:  
docklands@madisonbrook.com  
<https://madisonbrook.com/>