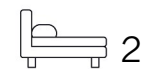




Living
made
better

Capital East Apartments
Royal Victoria Dock, E16 1AS



Asking Price £595,000

Capital East Apartments, Royal Victoria Dock, E16 1AS

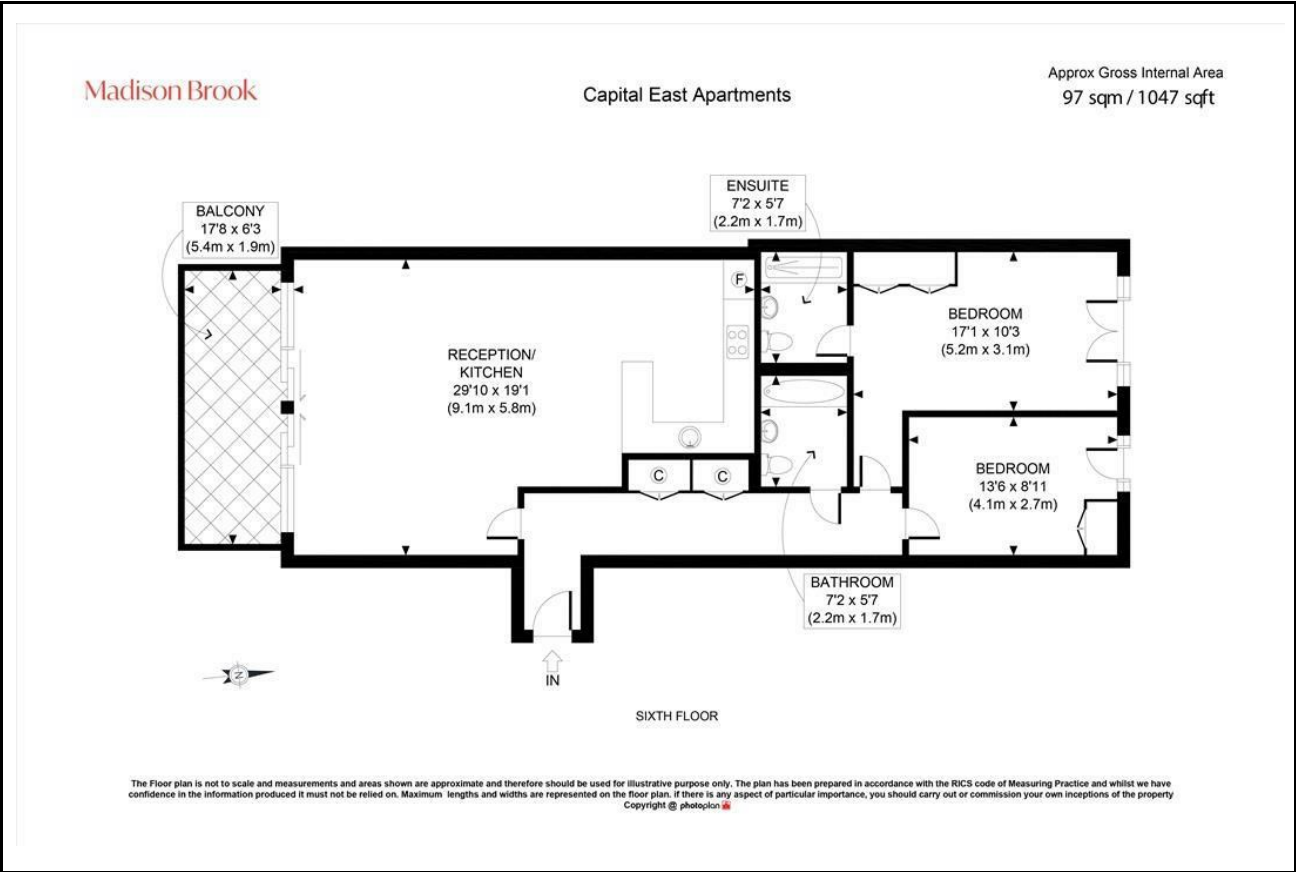
Madison Brook

Property Summary

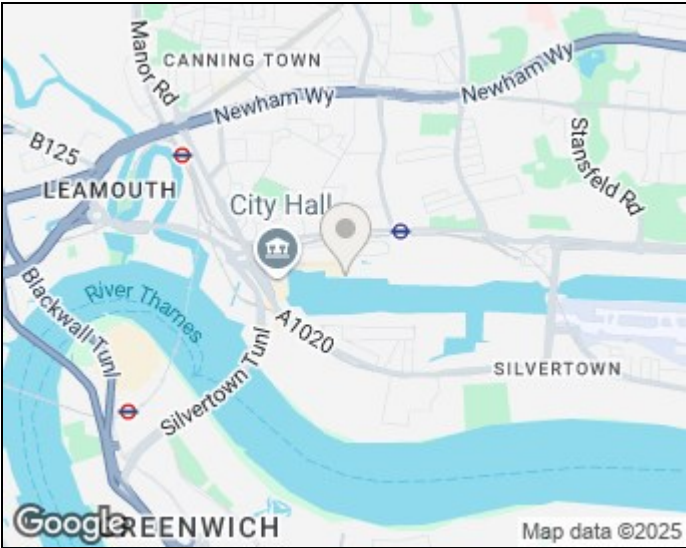
This stunning sixth-floor apartment in Capital East spans over 1,000 sq ft and showcases incredible views over the Dock, the O2 and City skyline. With two spacious double bedrooms, two bathrooms, and a vast open-plan kitchen/reception, this home is ideal for modern waterside living.

Floor-to-ceiling windows, a private balcony, and built-in wardrobes in both bedrooms add to the appeal. The development offers 24-hour concierge, gym, and gated parking, with excellent access to the Elizabeth Line and DLR.

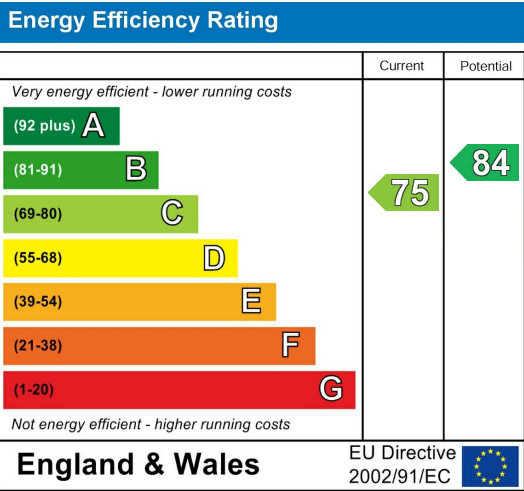
Floorplan



Area Map



Energy Efficiency Graph



These particulars, whilst believed to be accurate are set out as a general outline only for guidance and do not constitute any part of an offer or contract. Intending purchasers should not rely on them as statements of representation of fact, but must satisfy themselves by inspection or otherwise as to their accuracy. No person in this firm's employment has the authority to make or give any representation or warranty in respect of the property.

Unit B 20 Western Gateway, Royal Victoria
Dock, London, E16 1BS
Tel: 020 3946 6000 Email:
docklands@madisonbrook.com
<https://madisonbrook.com/>