

Living  
made  
better

Fathom Court  
Gallions Reach, E16 2FF



£2,300 PCM



# Fathom Court, Gallions Reach, E16 2FF

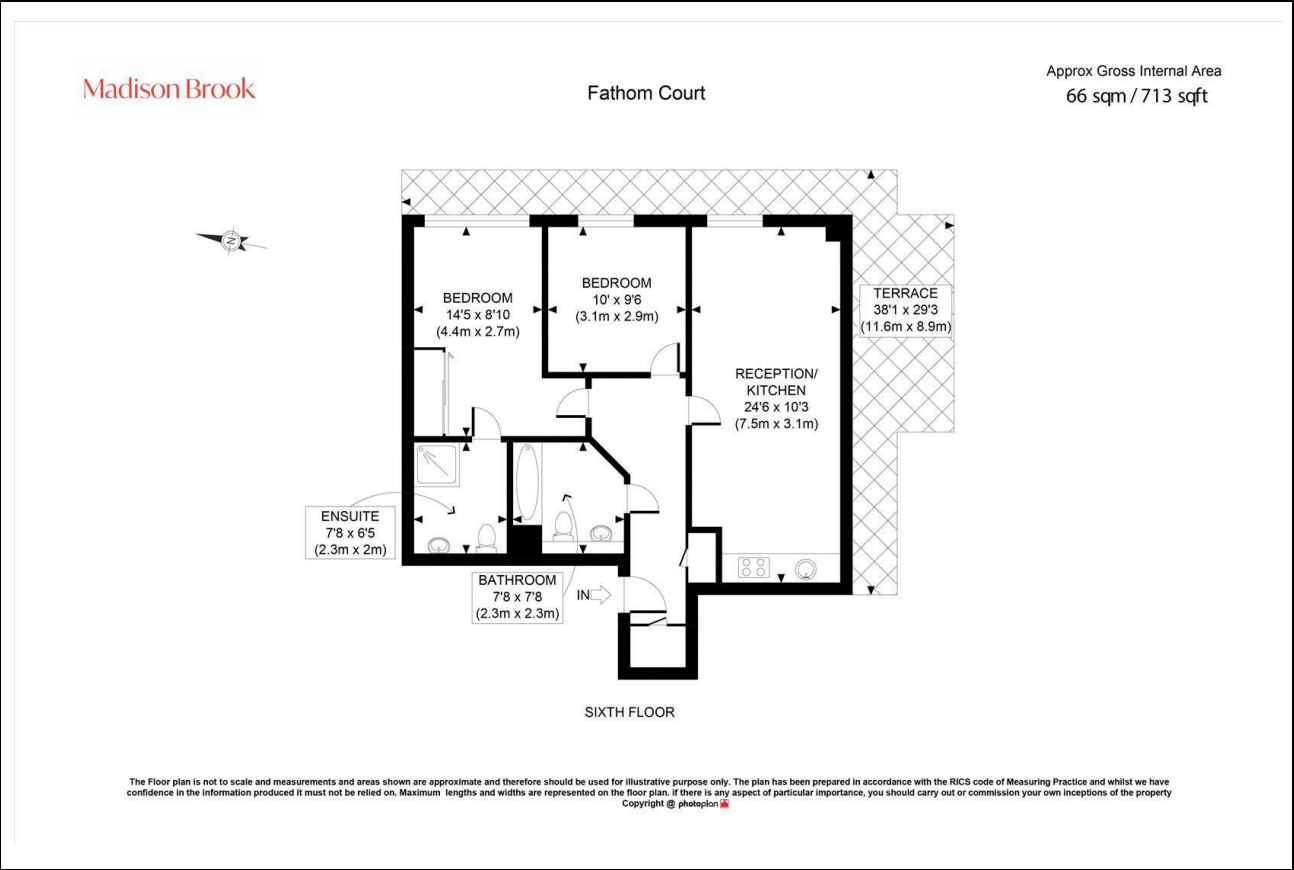
Madison Brook

## Property Summary

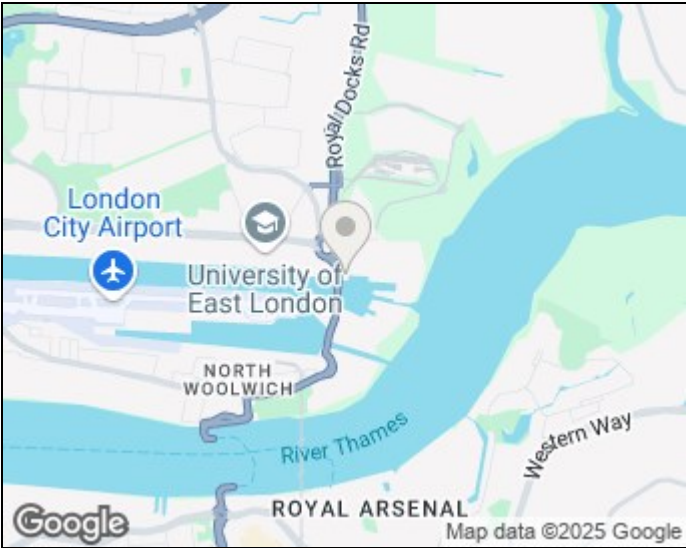
This two-bedroom apartment, located on the sixth floor of Fathom Court, offers water views over the dock, London City Airport, and The O2 Arena from its south-facing balcony. The spacious open-plan reception features dark wood Amtico flooring, while the modern kitchen is fully equipped with high-spec appliances.

The master bedroom includes marina views and an en-suite shower room, and there is a second bedroom alongside a stylish family bathroom. The apartment also offers a private balcony and concierge service.

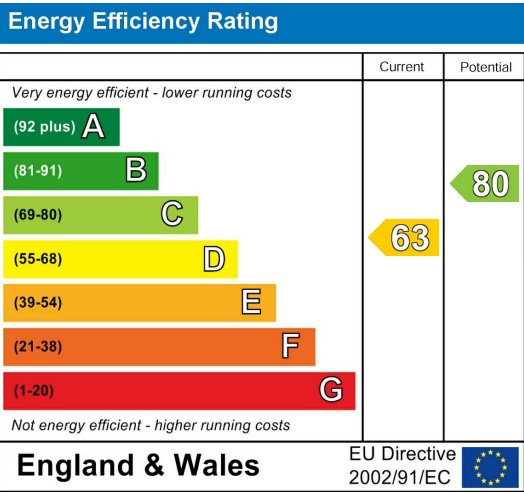
## Floorplan



## Area Map



## Energy Efficiency Graph



These particulars, whilst believed to be accurate are set out as a general outline only for guidance and do not constitute any part of an offer or contract. Intending purchasers should not rely on them as statements of representation of fact, but must satisfy themselves by inspection or otherwise as to their accuracy. No person in this firm's employment has the authority to make or give any representation or warranty in respect of the property.

Unit B 20 Western Gateway, Royal Victoria  
Dock, London, E16 1BS  
Tel: 020 3946 6000 Email:  
docklands@madisonbrook.com  
<https://madisonbrook.com/>