

Living
made
better

Defoe House
London City Island, E14 0TX



Asking Price £675,000

Defoe House, London City Island, E14 OTX

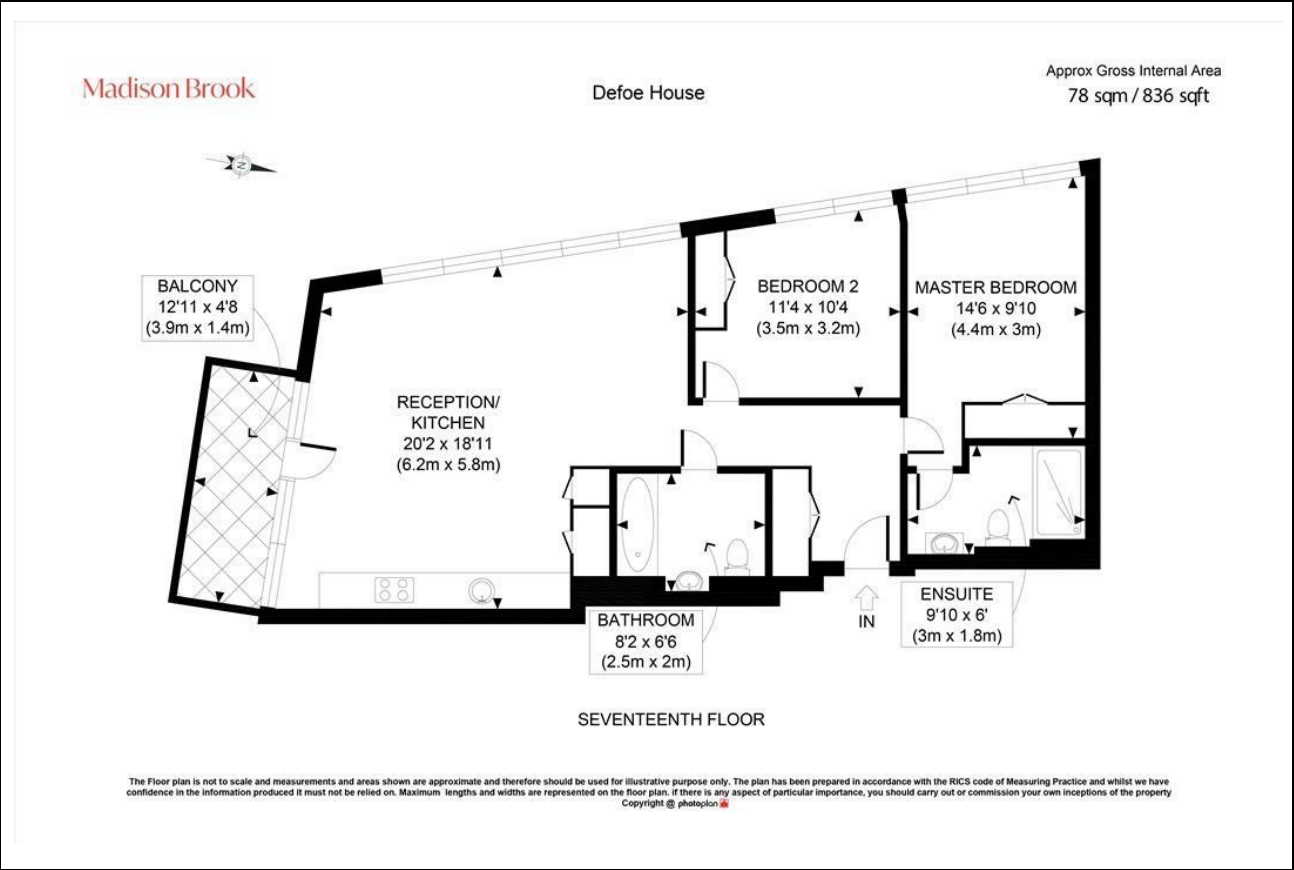
Madison Brook

Property Summary

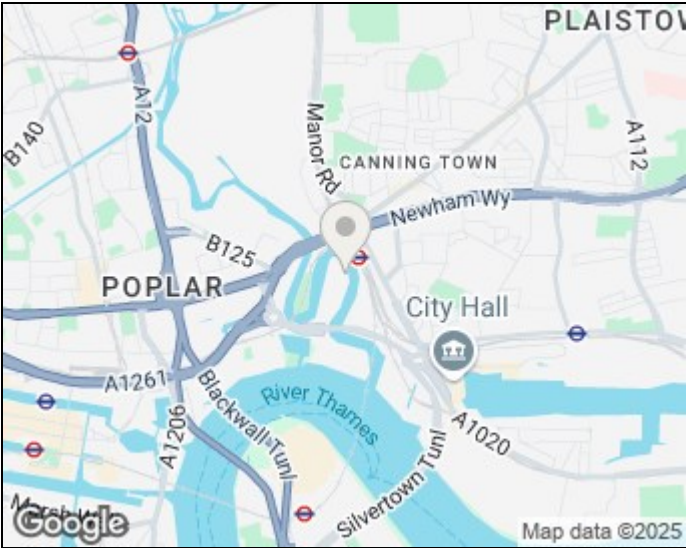
Located within the prestigious London City Island development, this two-bedroom, two-bathroom apartment is set on the 17th floor of Defoe House and offers stunning south-west facing city views. With 836 sq. ft. of stylish living space, features include an open-plan reception/kitchen, private balcony, principal bedroom with en-suite, and underground parking.

Residents enjoy access to two gyms, a heated pool, spa, rooftop sports court, and 24-hour concierge. With 994 years remaining on the lease and excellent transport links via Canning Town station, this is a superb city living opportunity.

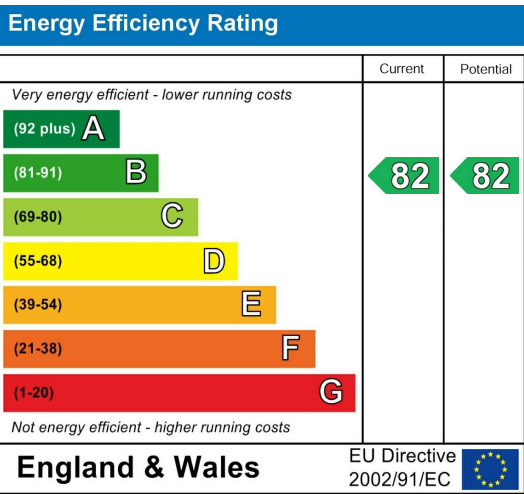
Floorplan



Area Map



Energy Efficiency Graph



These particulars, whilst believed to be accurate are set out as a general outline only for guidance and do not constitute any part of an offer or contract. Intending purchasers should not rely on them as statements of representation of fact, but must satisfy themselves by inspection or otherwise as to their accuracy. No person in this firms employment has the authority to make or give any representation or warranty in respect of the property.

Unit B 20 Western Gateway, Royal Victoria
Dock, London, E16 1BS
Tel: 020 3946 6000 Email:
docklands@madisonbrook.com
<https://madisonbrook.com/>