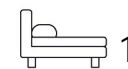


Living
made
better

Landmark West Tower
Canary Wharf, E14 9AF



£2,175 PCM

Landmark West Tower, Canary Wharf, E14 9AF

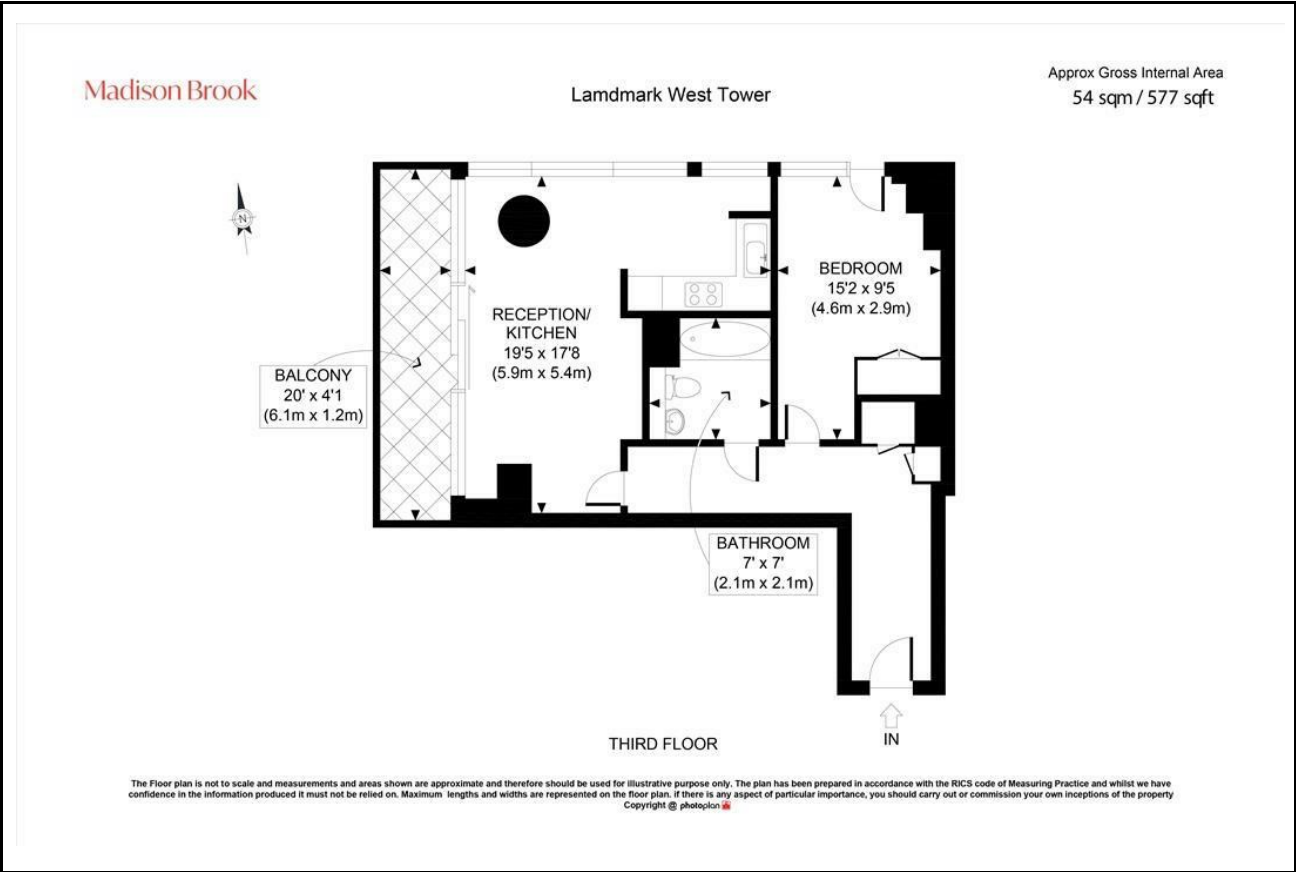
Madison Brook

Property Summary

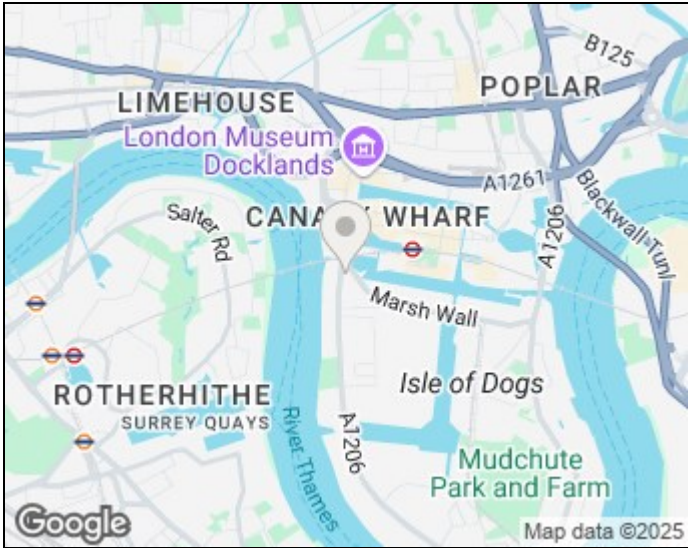
Located in Landmark West Tower, Canary Wharf, this stylish one-bedroom apartment offers 577 sq. ft. of living space, a large private balcony, and access to a residents' gym. The property features a bright open-plan reception with integrated kitchen, a double bedroom with fitted storage, a high-spec bathroom, dark wood flooring, and air conditioning throughout.

Residents benefit from a 24-hour concierge with fingerprint entry. Just moments from South Quay DLR and Canary Wharf stations.

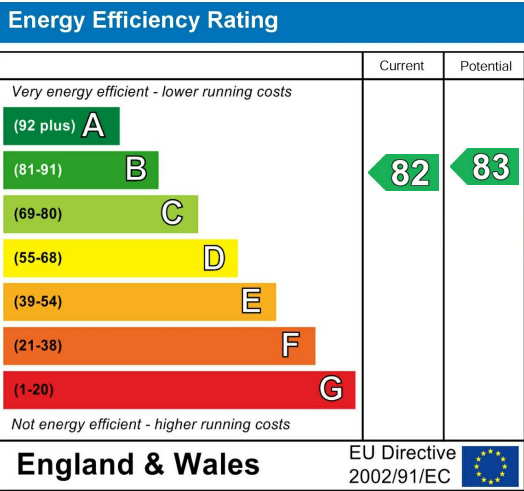
Floorplan



Area Map



Energy Efficiency Graph



These particulars, whilst believed to be accurate are set out as a general outline only for guidance and do not constitute any part of an offer or contract. Intending purchasers should not rely on them as statements of representation of fact, but must satisfy themselves by inspection or otherwise as to their accuracy. No person in this firms employment has the authority to make or give any representation or warranty in respect of the property.

Unit B 20 Western Gateway, Royal Victoria
Dock, London, E16 1BS
Tel: 020 3946 6000 Email:
docklands@madisonbrook.com
<https://madisonbrook.com/>