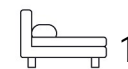


Living
made
better

1 Bywell Place
Canning Town, E16 1JW



1



1



1



B

£1,900 PCM

1 Bywell Place, Canning Town, E16 1JW

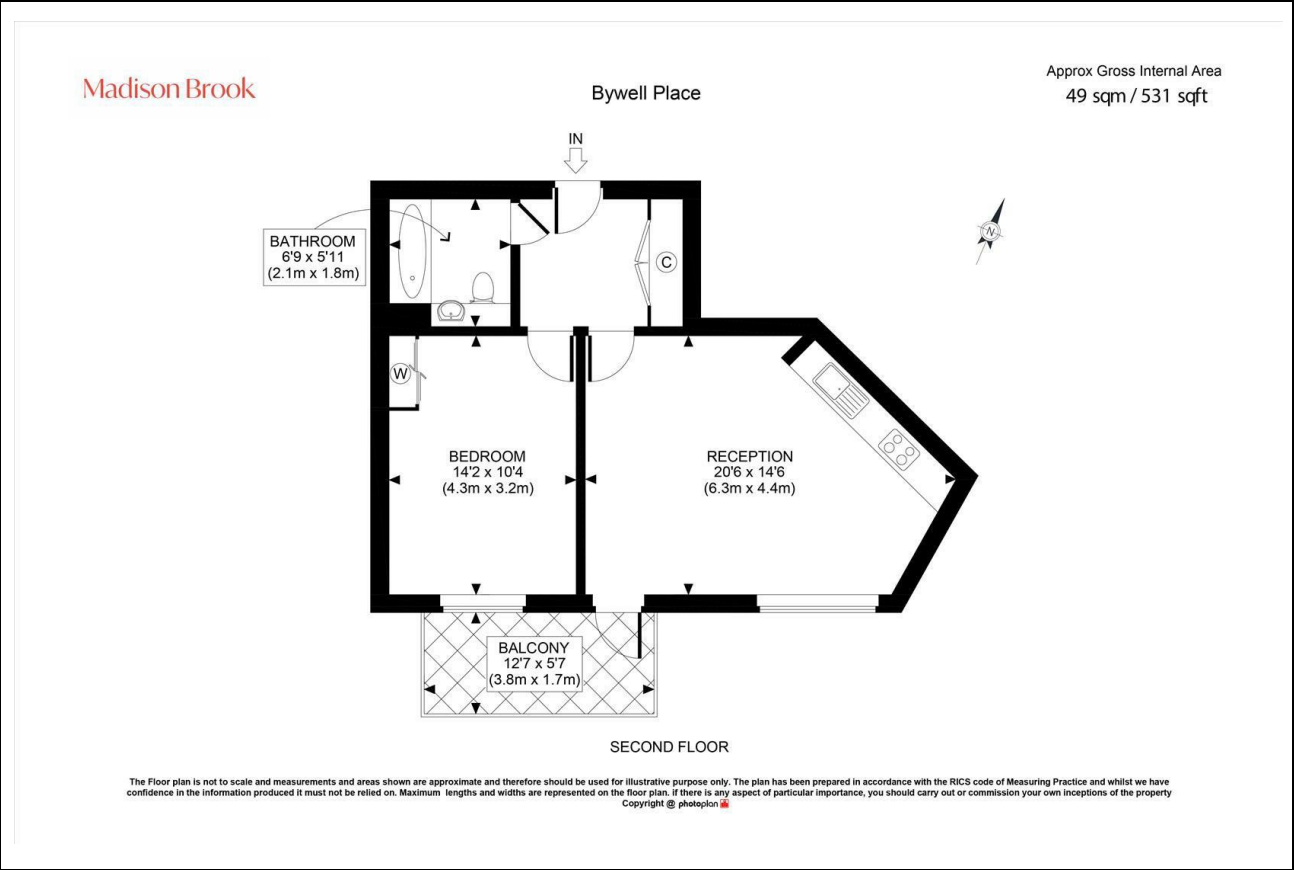
Madison Brook

Property Summary

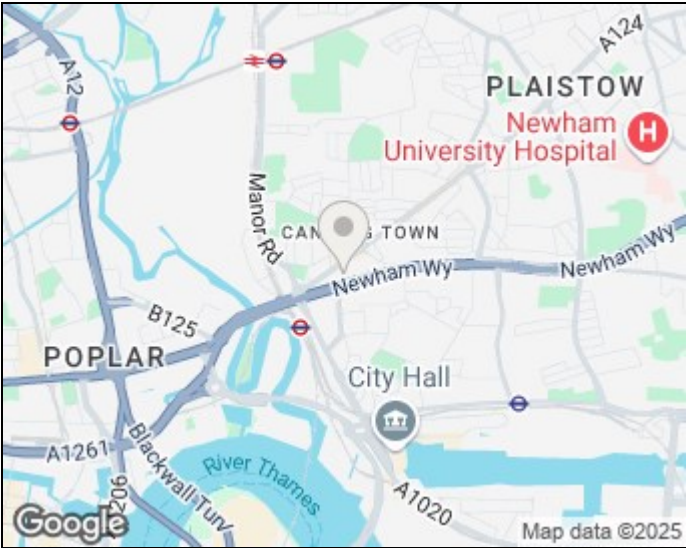
A bright and spacious one-bedroom apartment situated on the second floor of a well-maintained development moments from Canning Town Station (Jubilee Line & DLR). Offering 531 sq. ft. of stylish interiors, this property comprises an open-plan reception with sleek fitted kitchen, a well-proportioned bedroom with storage, and a contemporary tiled bathroom. The private balcony overlooks a tranquil courtyard, and underground parking is available by separate negotiation.

Fully furnished and available for long-term tenancy, this home is ideal for professionals seeking connectivity and comfort in East London.

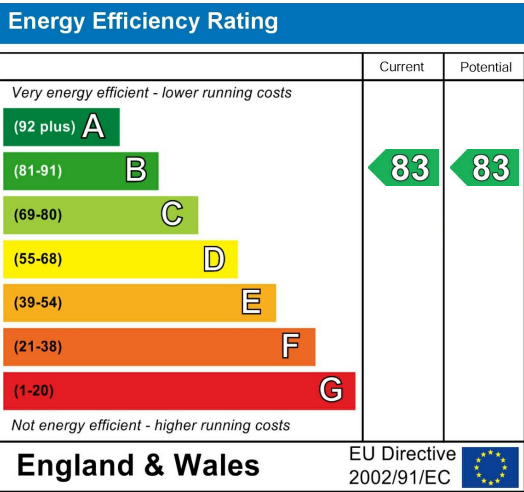
Floorplan



Area Map



Energy Efficiency Graph



These particulars, whilst believed to be accurate are set out as a general outline only for guidance and do not constitute any part of an offer or contract. Intending purchasers should not rely on them as statements of representation of fact, but must satisfy themselves by inspection or otherwise as to their accuracy. No person in this firm's employment has the authority to make or give any representation or warranty in respect of the property.

Unit B 20 Western Gateway, Royal Victoria
Dock, London, E16 1BS
Tel: 020 3946 6000 Email:
docklands@madisonbrook.com
<https://madisonbrook.com/>