

Living
made
better

Eastern Quay Apartments
Silvertown, E16 1AX



Offers In Excess Of £575,000

Eastern Quay Apartments, Silvertown, E16 1AX

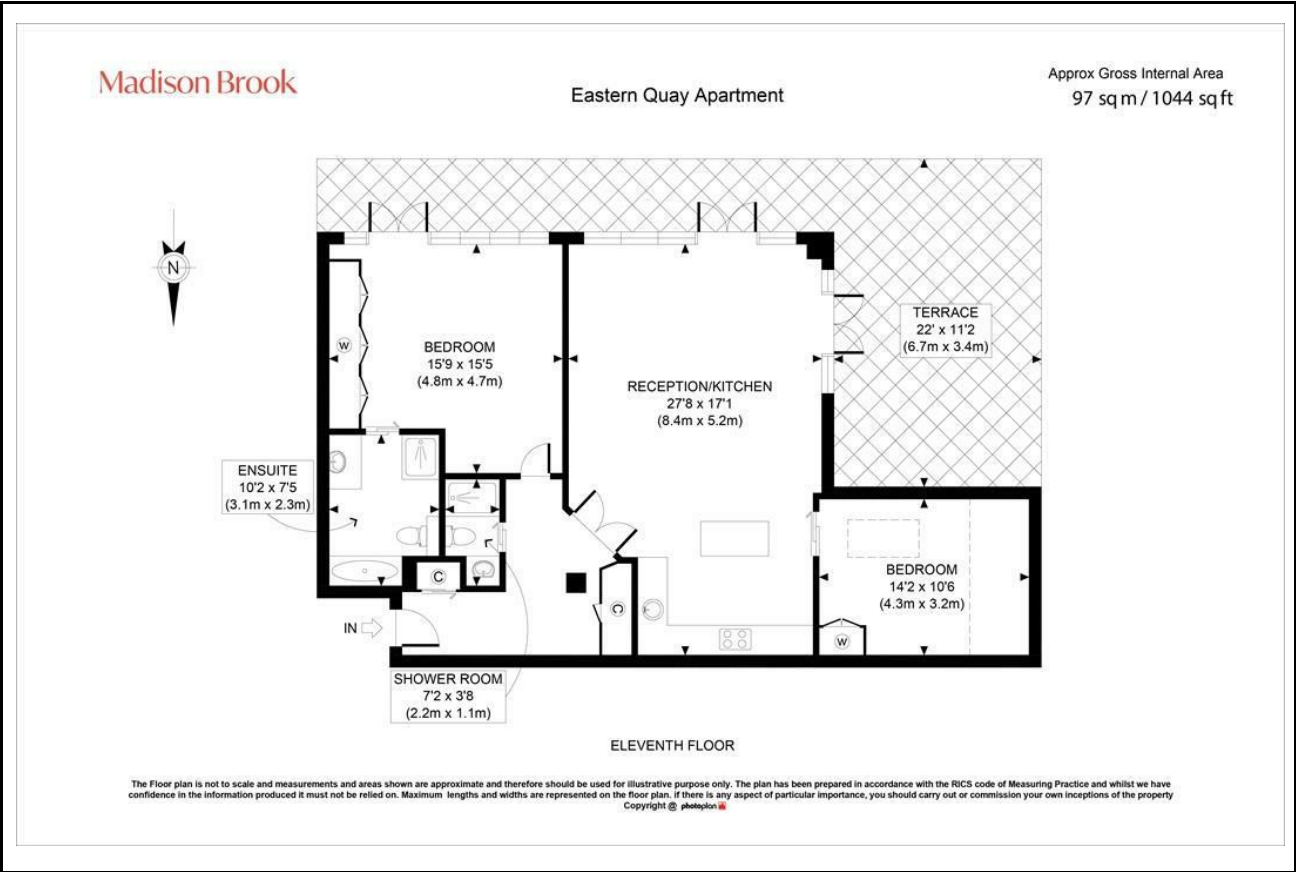
Madison Brook

Property Summary

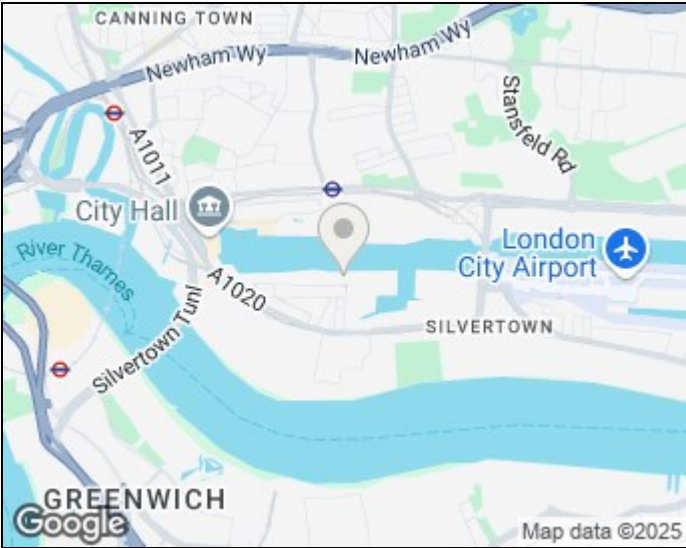
A beautifully presented two-bedroom penthouse apartment on the 11th floor of Eastern Quay. Spanning over 1,040 sq. ft., the home features a wraparound terrace with views over the Thames, O2, and City skyline. The light-filled interior includes a generous reception with integrated kitchen and island, two large double bedrooms, two bathrooms (including an en-suite), and excellent storage.

The apartment comes with secure parking, a long 170-year lease, no ground rent, and an on-site concierge. Ideally positioned for the Elizabeth Line and DLR stations.

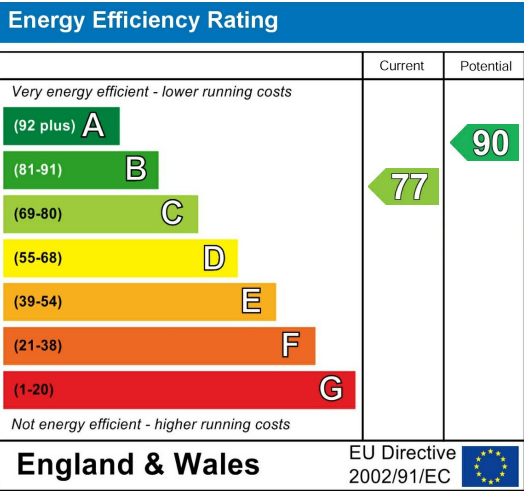
Floorplan



Area Map



Energy Efficiency Graph



These particulars, whilst believed to be accurate are set out as a general outline only for guidance and do not constitute any part of an offer or contract. Intending purchasers should not rely on them as statements of representation of fact, but must satisfy themselves by inspection or otherwise as to their accuracy. No person in this firm's employment has the authority to make or give any representation or warranty in respect of the property.

Unit B 20 Western Gateway, Royal Victoria
Dock, London, E16 1BS
Tel: 020 3946 6000 Email:
docklands@madisonbrook.com
<https://madisonbrook.com/>