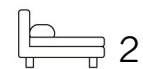




Living
made
better

Westland House
North Woolwich, E16 2LF



Asking Price £265,000

Westland House, North Woolwich, E16 2LF

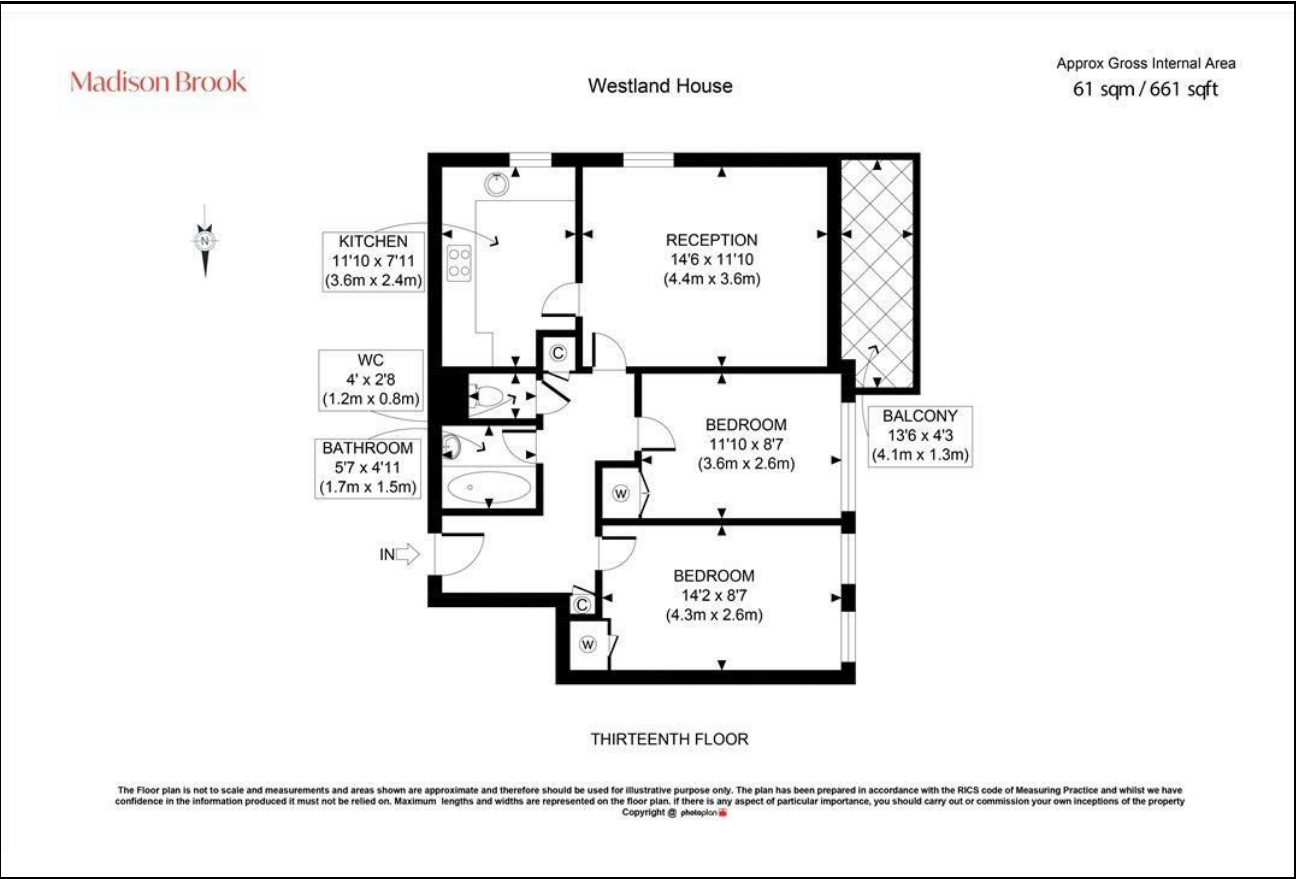
Madison Brook

Property Summary

Well-presented two-bedroom apartment on the 13th floor of Westland House with stunning views of the Thames, City Airport, and Canary Wharf. Features include two double bedrooms with built-in wardrobes, a bright reception with balcony, a separate kitchen, and a family bathroom plus WC.

Triple glazing throughout ensures quiet, comfortable living. The building is EWS1 compliant and benefits from an onsite porter. Moments from King George V DLR with quick access to the City and Canary Wharf. Offered leasehold with 100 years remaining.

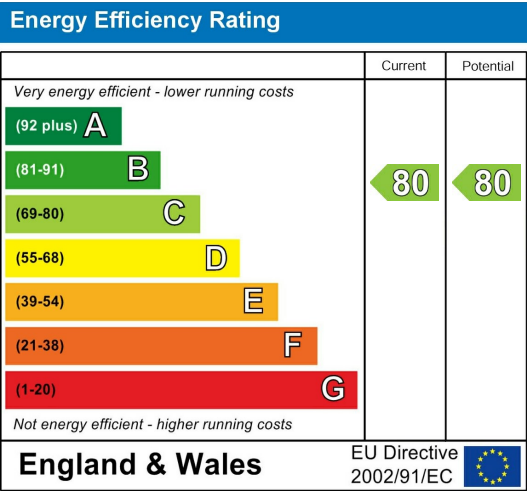
Floorplan



Area Map



Energy Efficiency Graph



These particulars, whilst believed to be accurate are set out as a general outline only for guidance and do not constitute any part of an offer or contract. Intending purchasers should not rely on them as statements of representation of fact, but must satisfy themselves by inspection or otherwise as to their accuracy. No person in this firm's employment has the authority to make or give any representation or warranty in respect of the property.

Unit B 20 Western Gateway, Royal Victoria
Dock, London, E16 1BS
Tel: 020 3946 6000 Email:
docklands@madisonbrook.com
<https://madisonbrook.com/>