



Living
made
better

Ellipse House
Royal Victoria Dock, E16 1JN



Asking Price £665,000

Ellipse House, Royal Victoria Dock, E16 1JN

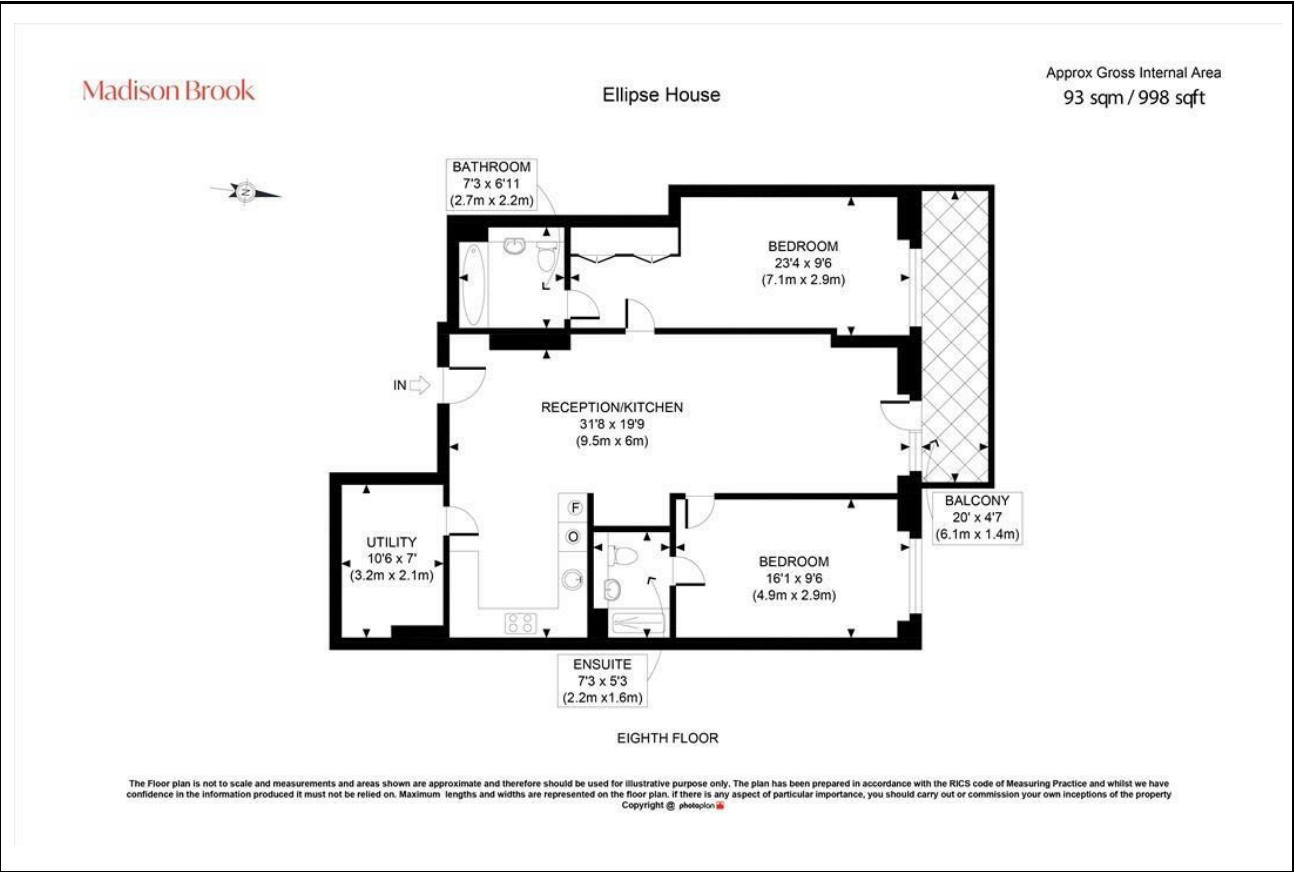
Madison Brook

Property Summary

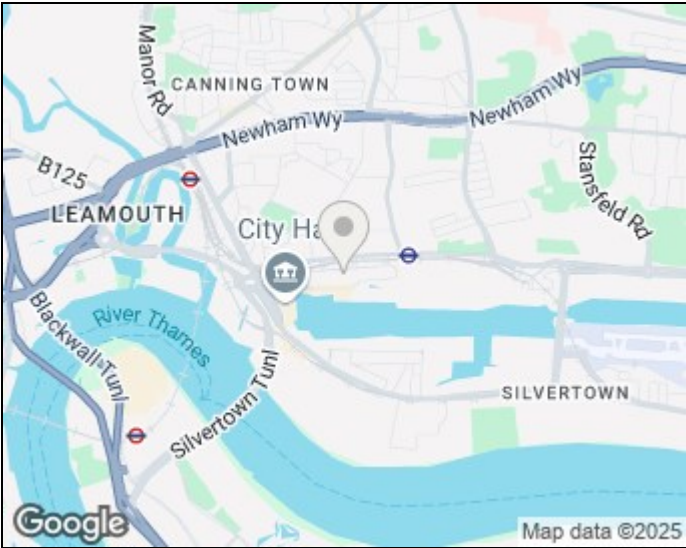
A brand-new, high-spec two-bedroom, two-bathroom apartment in Royal Eden Docks, completed in January 2025. Located on the eighth floor, this 998 sqft home features a spacious open-plan reception/kitchen, stylish en suite and family bathroom, and a large private balcony. There's a dedicated utility room and excellent storage throughout.

Residents benefit from outstanding amenities, including a 24-hour concierge, gym, swimming pool, cinema room, and rooftop running track (pending). Just moments from the Elizabeth Line, Royal Victoria DLR, and Excel.

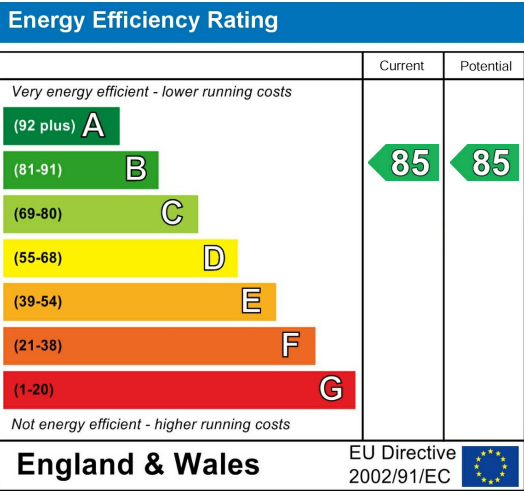
Floorplan



Area Map



Energy Efficiency Graph



These particulars, whilst believed to be accurate are set out as a general outline only for guidance and do not constitute any part of an offer or contract. Intending purchasers should not rely on them as statements of representation of fact, but must satisfy themselves by inspection or otherwise as to their accuracy. No person in this firms employment has the authority to make or give any representation or warranty in respect of the property.

Unit B 20 Western Gateway, Royal Victoria
Dock, London, E16 1BS
Tel: 020 3946 6000 Email:
docklands@madisonbrook.com
<https://madisonbrook.com/>