



Living
made
better

Mitcham Road
East Ham, E6 3LT



Offers In Excess Of £650,000

Mitcham Road, East Ham E6 3LT

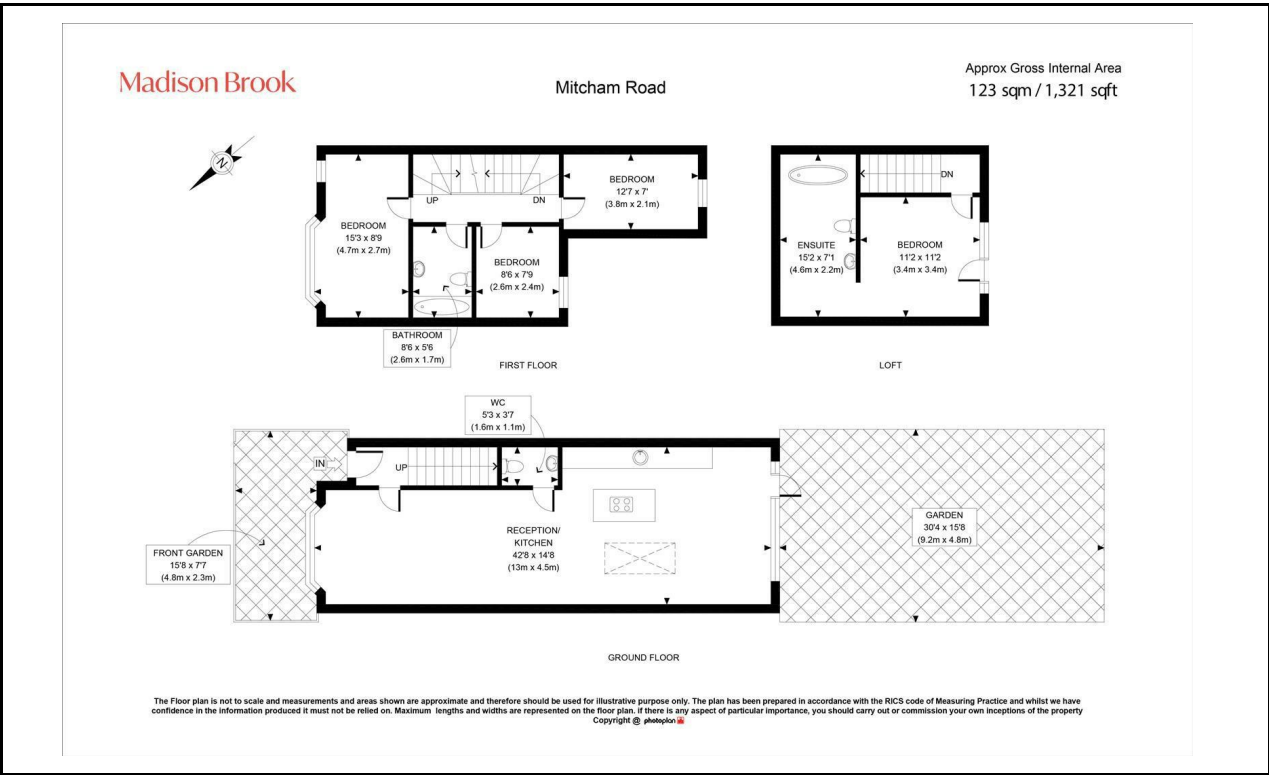
Madison Brook

Property Summary

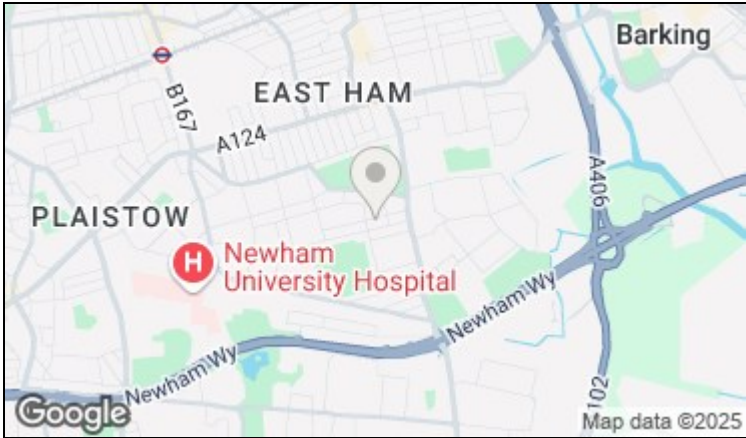
This exceptional four-bedroom family home has been fully reimagined through a meticulous back-to-brick renovation, setting a new standard for luxury living in East Ham. Every detail has been carefully considered, blending high-end finishes with functional design to create a truly inspiring space.

Set over three beautifully appointed levels, the property boasts a striking open-plan kitchen and living area, complete with a feature island, integrated appliances, and full-width bi-fold doors that seamlessly connect to a landscaped rear garden. The heart of the home is filled with light thanks to large skylights and clever architectural planning. Upstairs, four well-proportioned bedrooms are complemented by two contemporary bathrooms, including a top-floor principal suite with bespoke fitted storage, Juliet balcony, and a serene freestanding bathtub beneath a skylight – a real sanctuary. Each bathroom features high-spec fixtures, stylish tiling, and underfloor heating for ultimate comfort.

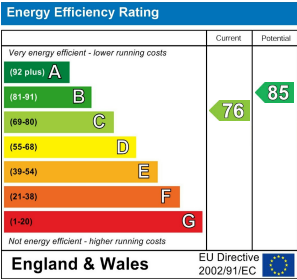
Floorplan



Area Map



Energy Efficiency Graph



These particulars, whilst believed to be accurate are set out as a general outline only for guidance and do not constitute any part of an offer or contract. Intending purchasers should not rely on them as statements of representation of fact, but must satisfy themselves by inspection or otherwise as to their accuracy. No person in this firm's employment has the authority to make or give any representation or warranty in respect of the property.

Unit B 20 Western Gateway, Royal Victoria Dock, London, E16 1BS
Tel: 020 3946 6000 Email: docklands@madisonbrook.com <https://madisonbrook.com/>