



Living
made
better

Vickery's Wharf
Bow Common, E14 6JS



Asking Price £425,000

Vickery's Wharf, Bow Common, E14 6JS

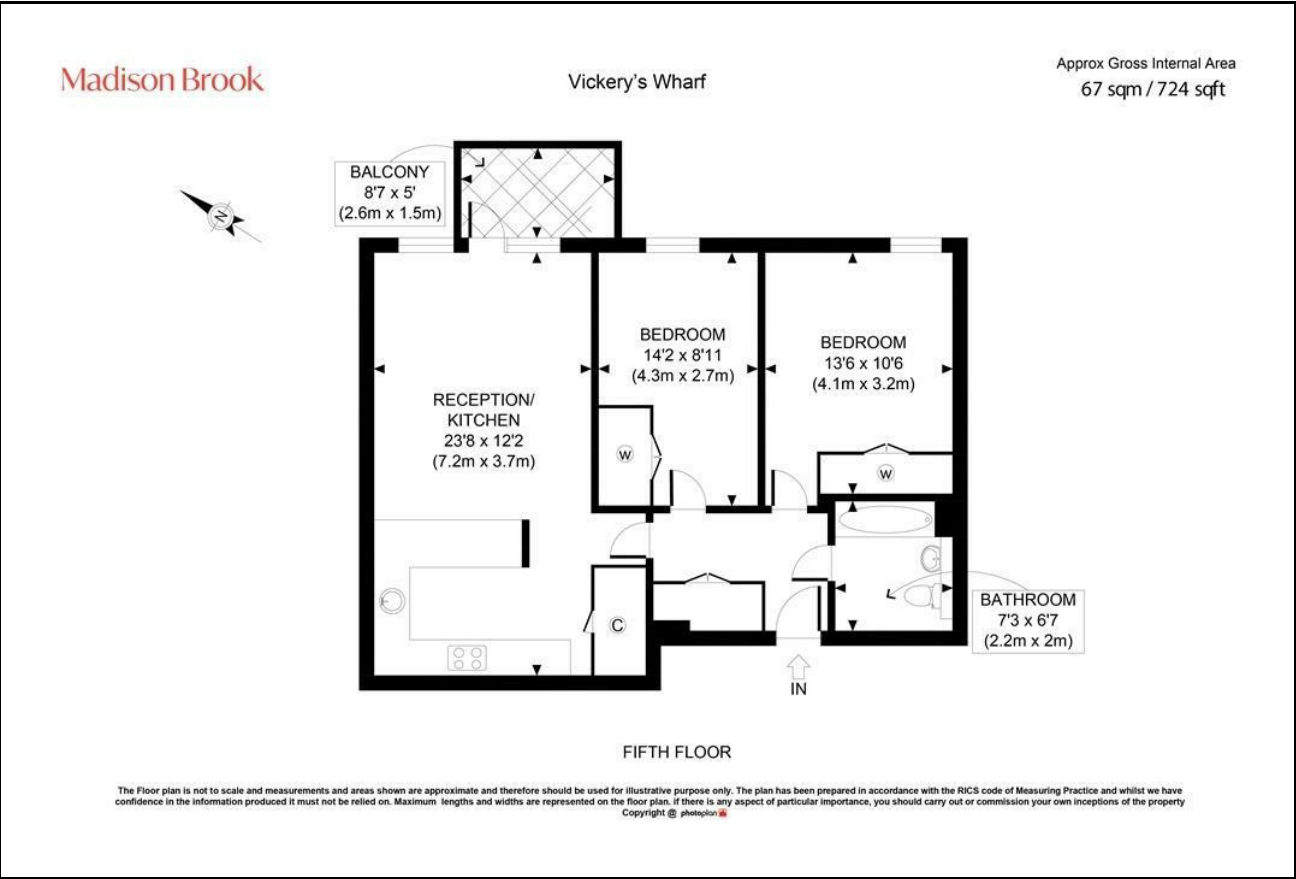
Madison Brook

Property Summary

This well-presented two-bedroom apartment is located in a gated development with canalside views and excellent amenities. Set on the fifth floor, it features a bright open-plan kitchen/living space, leading out to a private balcony overlooking Limehouse Cut.

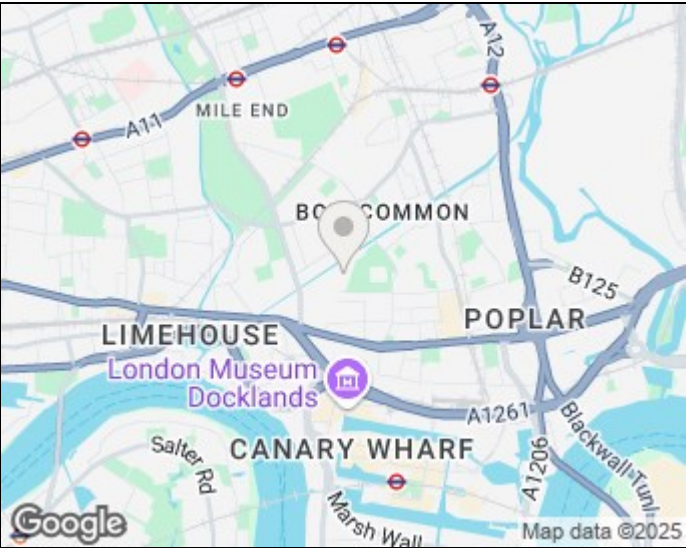
Additional perks include onsite concierge, lift access, and proximity to Westferry DLR, ensuring easy access to Canary Wharf and The City. Bartlett Park and local cafés, shops, and amenities are all nearby.

Floorplan

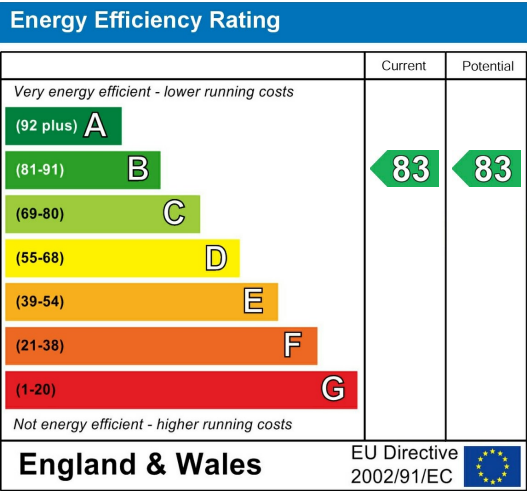


These particulars, whilst believed to be accurate are set out as a general outline only for guidance and do not constitute any part of an offer or contract. Intending purchasers should not rely on them as statements of representation of fact, but must satisfy themselves by inspection or otherwise as to their accuracy. No person in this firm's employment has the authority to make or give any representation or warranty in respect of the property.

Area Map



Energy Efficiency Graph



Unit B 20 Western Gateway, Royal Victoria
Dock, London, E16 1BS
Tel: 020 3946 6000 Email:
docklands@madisonbrook.com
<https://madisonbrook.com/>