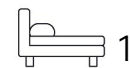




Living
made
better

Ernest Websdale House
Barking, IG11 0FX



Asking Price £250,000

Ernest Websdale House, Barking, IG11 0FX

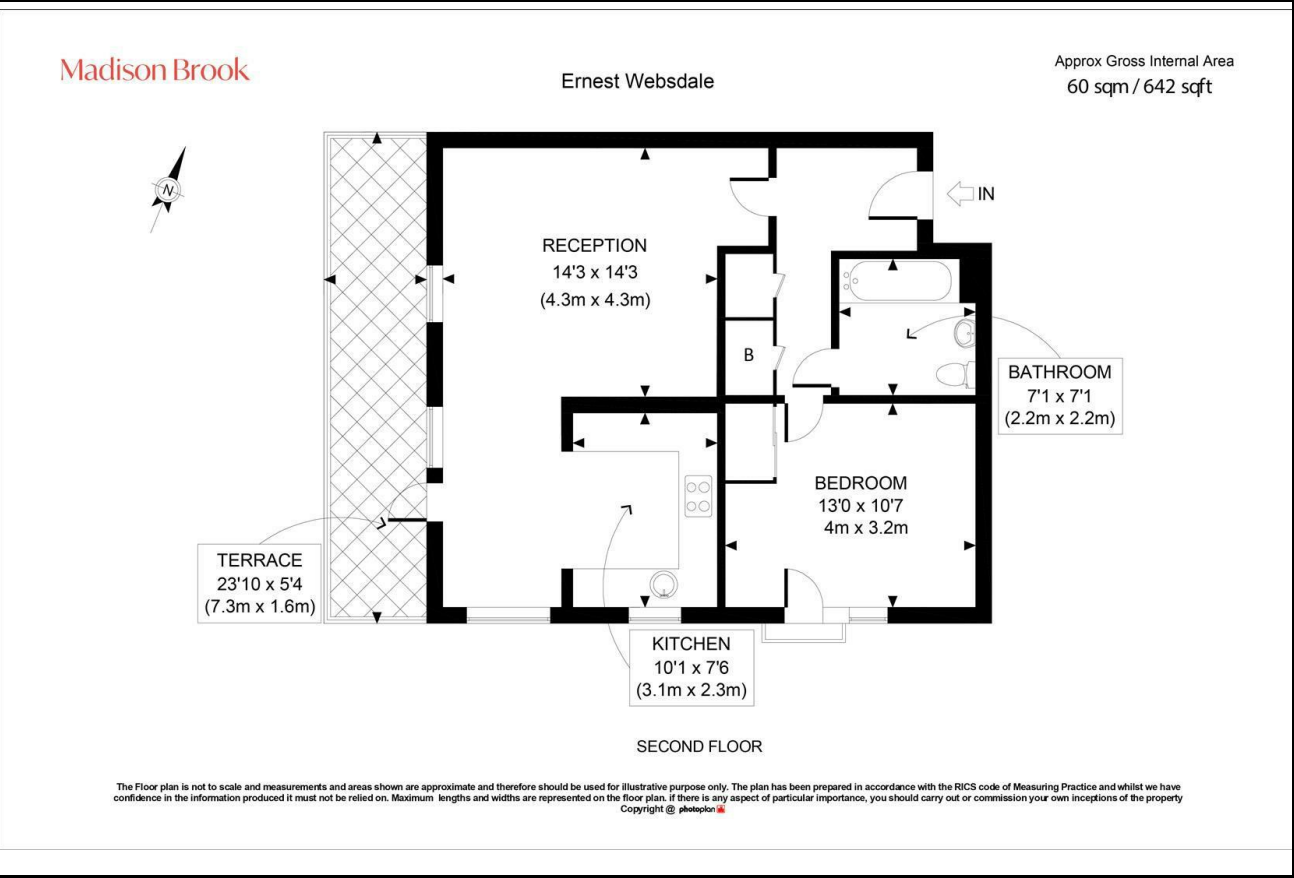
Madison Brook

Property Summary

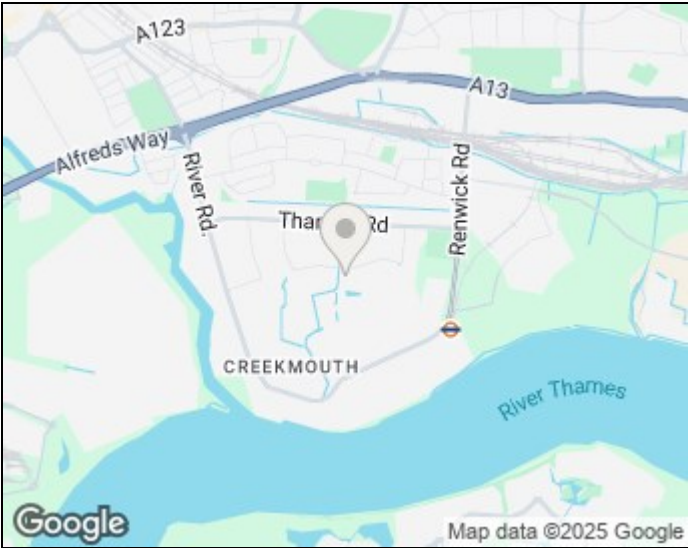
Set within the Barking Riverside development, this spacious one-bedroom apartment offers 642 sq. ft. of stylish living, featuring floor-to-ceiling windows, a large private balcony, and secure underground parking.

With Barking Riverside Overground Station and the Thames Clipper pier nearby, this home provides seamless access to Canary Wharf and Central London. 112-year lease remaining.

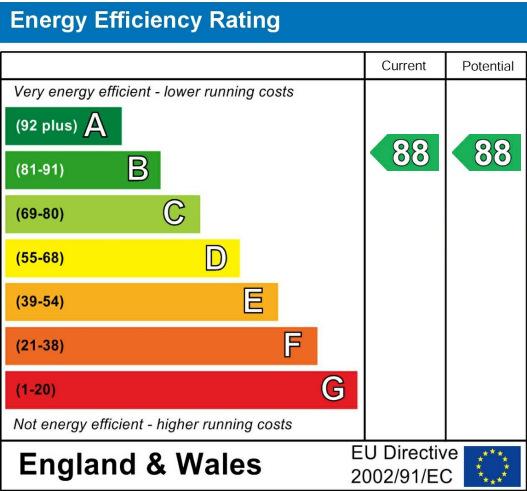
Floorplan



Area Map



Energy Efficiency Graph



These particulars, whilst believed to be accurate are set out as a general outline only for guidance and do not constitute any part of an offer or contract. Intending purchasers should not rely on them as statements of representation of fact, but must satisfy themselves by inspection or otherwise as to their accuracy. No person in this firm's employment has the authority to make or give any representation or warranty in respect of the property.

Unit B 20 Western Gateway, Royal Victoria
Dock, London, E16 1BS
Tel: 020 3946 6000 Email:
docklands@madisonbrook.com
<https://madisonbrook.com/>