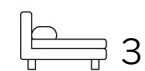


Living  
made  
better

Defoe House  
London City Island, E14 0TX



£3,250 PCM

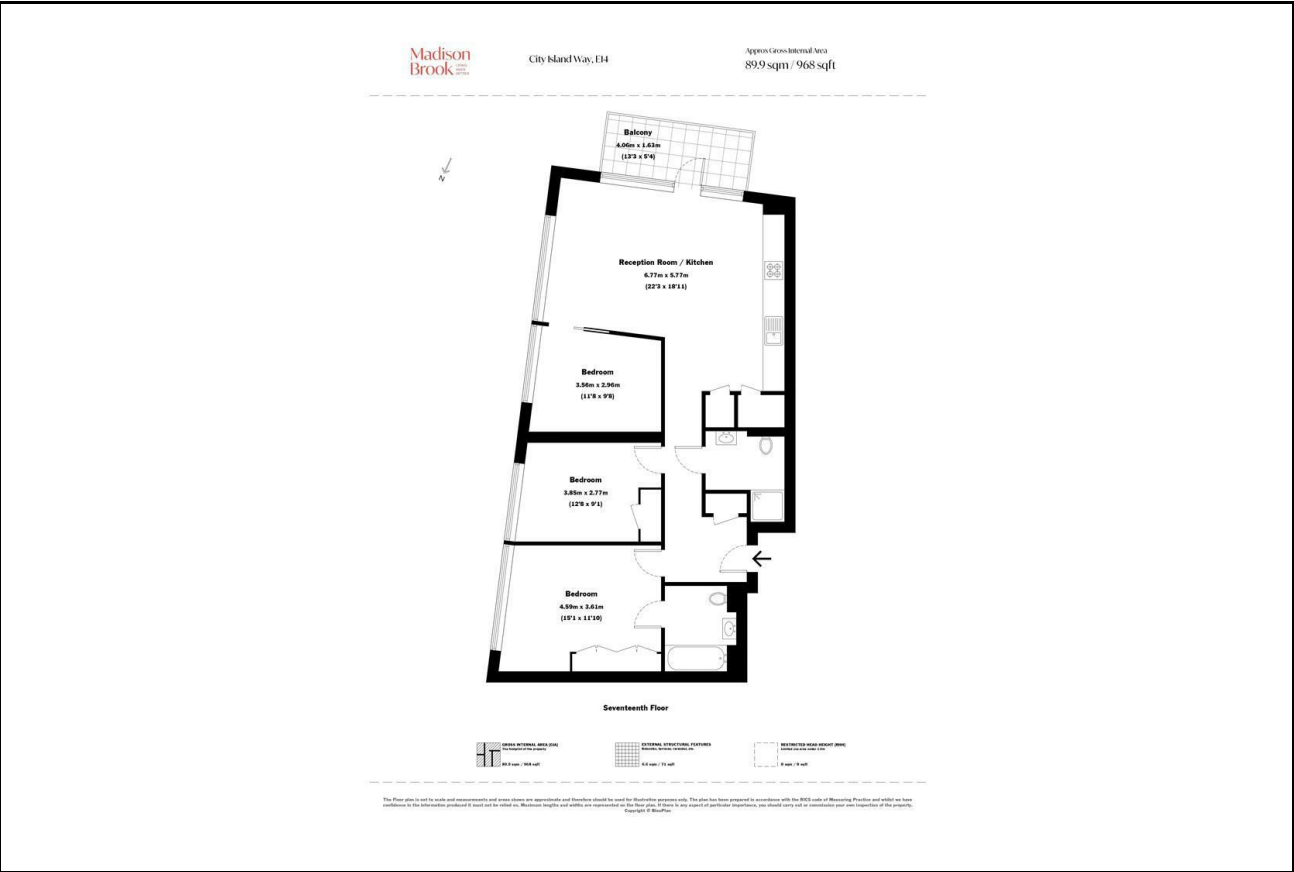
# Defoe House, London City Island, E14 OTX

Madison Brook

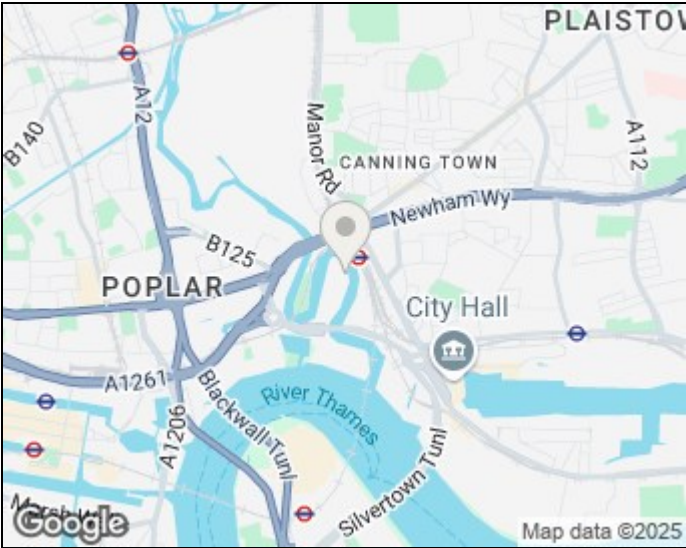
## Property Summary

This luxurious three-bedroom apartment on the 17th floor of Defoe House, London City Island, offers unrestricted 180-degree views of Canary Wharf and the O2, alongside world-class resident amenities. The spacious open-plan living area is bathed in natural light through floor-to-ceiling windows, creating an elegant and contemporary space. The sleek kitchen is fitted with high-end appliances and premium finishes, while the three well-proportioned bedrooms provide excellent space, with the principal bedroom benefitting from an en-suite bathroom. A second modern bathroom serves the remaining rooms, with ample storage throughout.

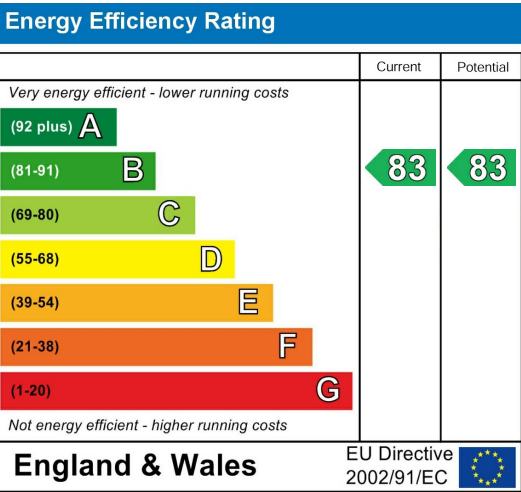
## Floorplan



## Area Map



## Energy Efficiency Graph



These particulars, whilst believed to be accurate are set out as a general outline only for guidance and do not constitute any part of an offer or contract. Intending purchasers should not rely on them as statements of representation of fact, but must satisfy themselves by inspection or otherwise as to their accuracy. No person in this firm's employment has the authority to make or give any representation or warranty in respect of the property.

Unit B 20 Western Gateway, Royal Victoria  
Dock, London, E16 1BS  
Tel: 020 3946 6000 Email:  
docklands@madisonbrook.com  
<https://madisonbrook.com/>