



Living
made
better

Ceram Court
Bow Common, E3 3GW



Asking Price £595,950

Ceram Court, Bow Common, E3 3GW

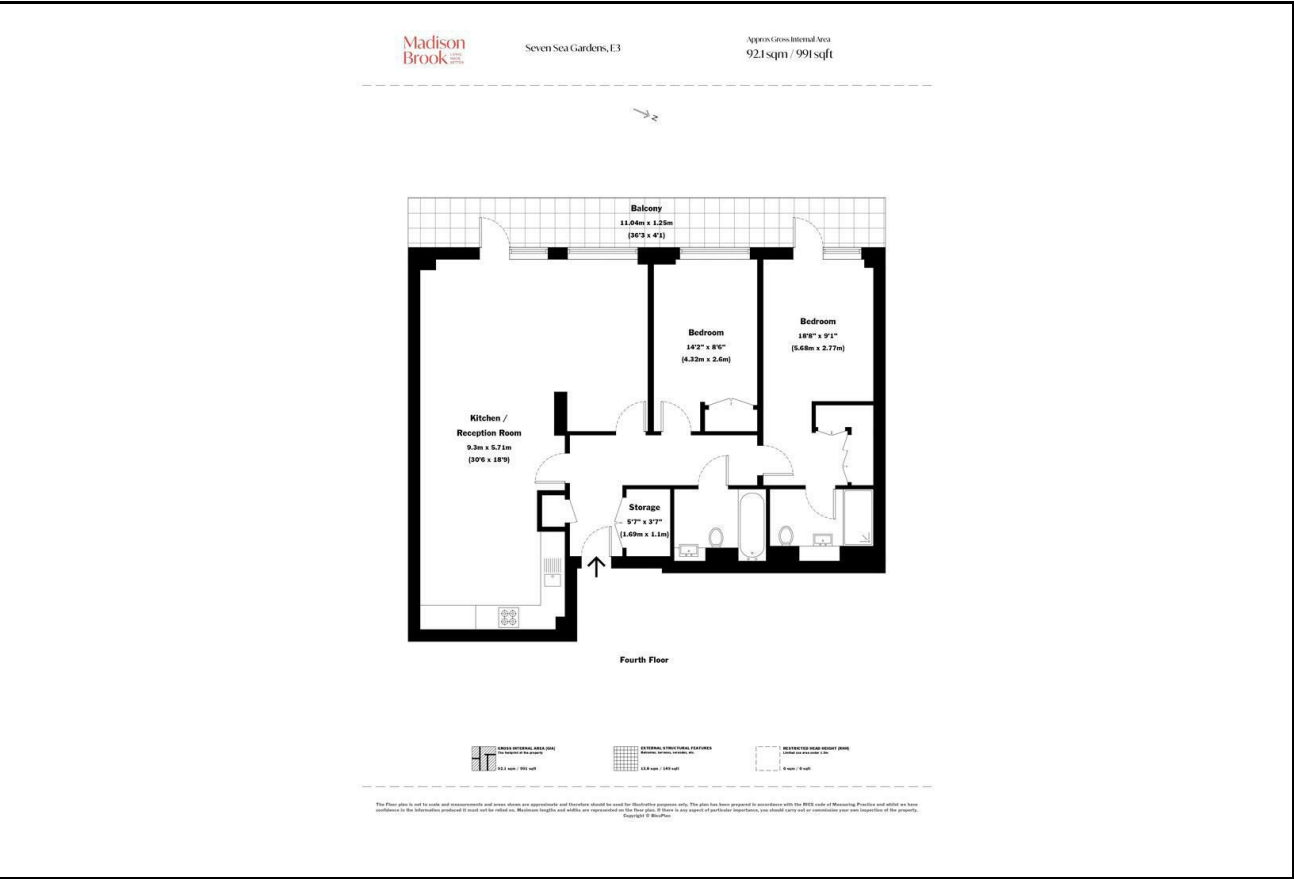
Madison Brook

Property Summary

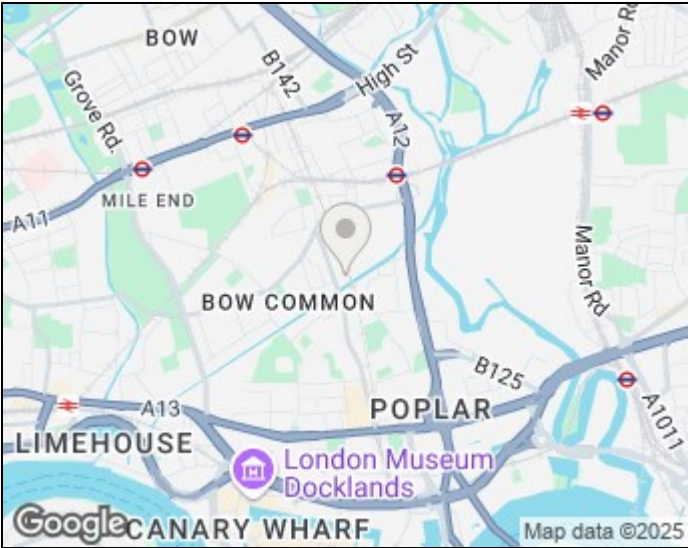
This well-presented two-bedroom apartment in the sought-after Caspian Wharf development offers contemporary city living in the heart of Bow, E3. Set on the fourth floor with lift access, this home boasts a generous open-plan kitchen and reception area, flooded with natural light through floor-to-ceiling windows.

Residents benefit from a 24-hour concierge service, a communal courtyard, and two secure allocated parking spaces. With Devons Road DLR moments away, enjoy swift connections to Canary Wharf, Stratford, and the City of London.

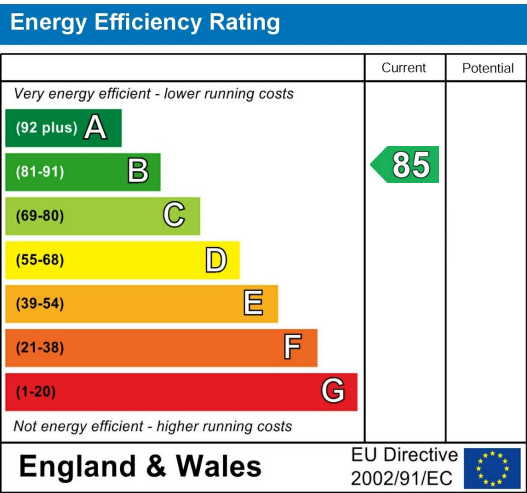
Floorplan



Area Map



Energy Efficiency Graph



These particulars, whilst believed to be accurate are set out as a general outline only for guidance and do not constitute any part of an offer or contract. Intending purchasers should not rely on them as statements of representation of fact, but must satisfy themselves by inspection or otherwise as to their accuracy. No person in this firm's employment has the authority to make or give any representation or warranty in respect of the property.

Unit B 20 Western Gateway, Royal Victoria
Dock, London, E16 1BS
Tel: 020 3946 6000 Email:
docklands@madisonbrook.com
<https://madisonbrook.com/>