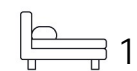




Living
made
better

Western Gateway
London, E16 1BL



Asking Price £305,000

Western Gateway, London E16 1BL

Madison Brook

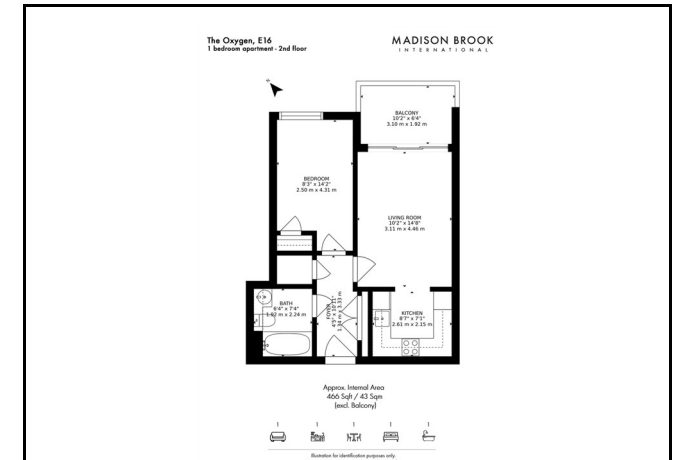
This stylish one bedroom flat situated on the second floor of a modern Dockside development and benefiting from open-plan living with balcony, good-sized bedroom with sizeable built-in storage cupboards and underfloor heating.

This property offers modern living with Both bathroom & kitchen are finished to a good standard and quality fittings being used throughout. Additionally, the property has a secure, gated parking space and on-site concierge.

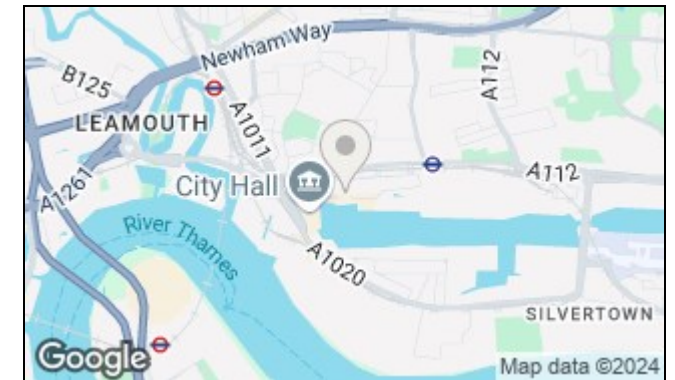
Conveniently situated to local amenities and transport in the Royal Docks such as Royal Victoria Dock DLR & The Elizabeth Line. Close to the cable cars and water sports centre. The shops, bars and restaurants in Canary Wharf are easily reached by transport.



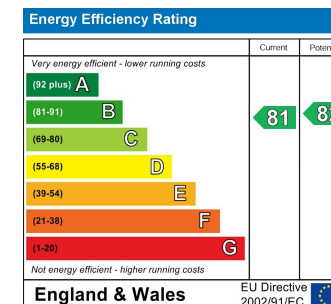
Floorplan



Area Map



Energy Efficiency Graph



These particulars, whilst believed to be accurate are set out as a general outline only for guidance and do not constitute any part of an offer or contract. Intending purchasers should not rely on them as statements of representation of fact, but must satisfy themselves by inspection or otherwise as to their accuracy. No person in this firm's employment has the authority to make or give any representation or warranty in respect of the property.

20 Western Gateway, Royal Victoria Dock, London, E16 1BS

Tel: 020 3946 6000 Email: docklands@madisonbrook.com <https://madisonbrook.com/>