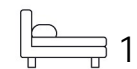




Living  
made  
better

Heron Place  
Silvertown, E16 2FJ



£1,750 PCM

# Heron Place, Silvertown E16 2FJ

Madison Brook

Set within the smart Waterside Park development near the River Thames at Silvertown, this superb one bedroom apartment offers naturally bright and well proportioned living space with stylish fixtures and fittings and private outside space.

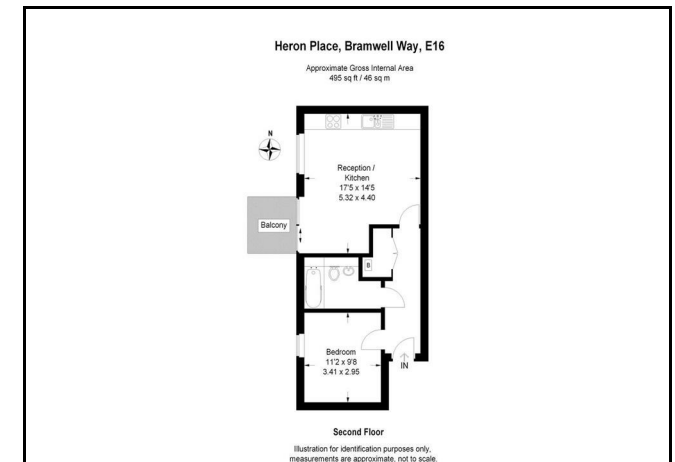
The property comprises reception room, sleek open-plan kitchen with integrated appliances, bedroom, chic bathroom, and private terrace overlooking Barrier Park.

The green open spaces of the Thames Barrier Park are moments away, the property is also within easy reach of the shops, bars and restaurants of the Canary Wharf complex and the nightlife of the O2 arena.

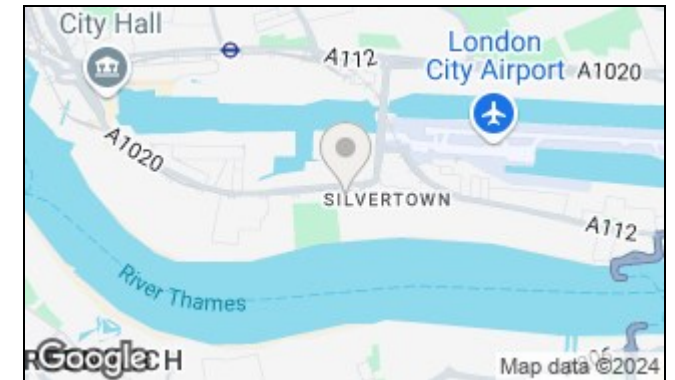
Local transport links include Pontoon Dock Station (DLR) and London City Airport being a short distance away.



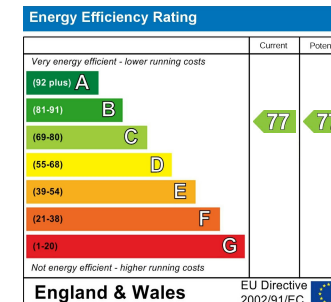
## Floorplan



## Area Map



## Energy Efficiency Graph



These particulars, whilst believed to be accurate are set out as a general outline only for guidance and do not constitute any part of an offer or contract. Intending purchasers should not rely on them as statements of representation of fact, but must satisfy themselves by inspection or otherwise as to their accuracy. No person in this firm's employment has the authority to make or give any representation or warranty in respect of the property.

20 Western Gateway, Royal Victoria Dock, London, E16 1BS

Tel: 020 3946 6000 Email: [docklands@madisonbrook.com](mailto:docklands@madisonbrook.com) <https://madisonbrook.com/>