



**Evan House**

8 Exeter Road, Canning Town, E16 1GP

**£1,700 PCM**

1 1 1 B

**MADISON BROOK**  
INTERNATIONAL

# Evan House, 8 Exeter Road, Canning Town, E16 1GP

Evan House is in the East City Point development situated moments from Canning Town underground station.

The property comprises a good-sized reception room with access to a good sized balcony, beautifully fitted kitchen with integrated appliances, master bedroom with views over London and chic bathroom.

Evan House is ideally located moments from the green open spaces of Victoria Dock Road, the banks of the River Thames and a selection of Royal Docks amenities. Local transport links include Canning Town underground and DLR service.

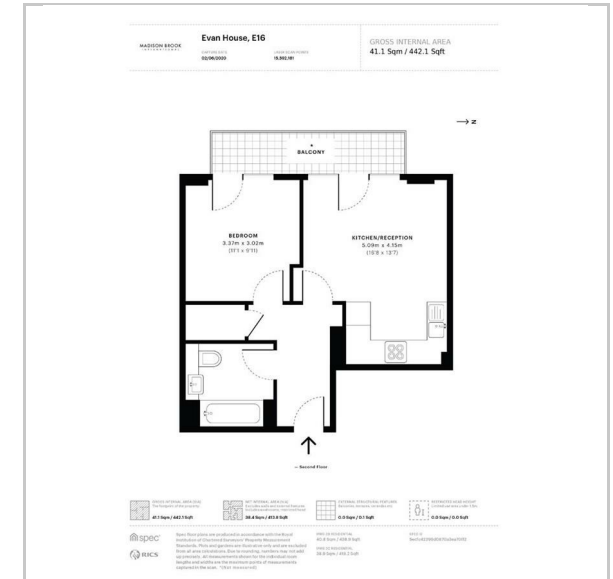
For the motorist, the property's location provides quick and easy access to the A1020, A12, A13 and Blackwall Tunnel for travel to and from Canary Wharf, the City, central London and beyond.



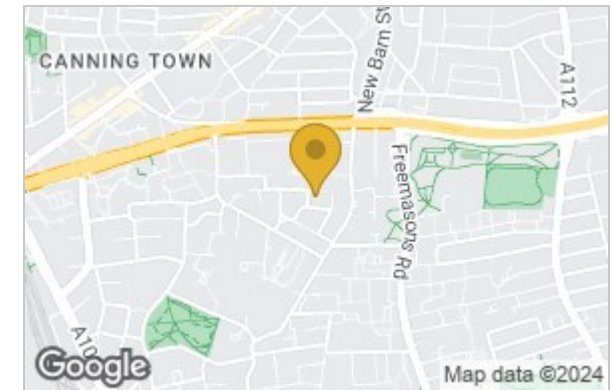
These particulars, whilst believed to be accurate are set out as a general outline only for guidance and do not constitute any part of an offer or contract. Intending purchasers should not rely on them as statements of representation of fact, but must satisfy themselves by inspection or otherwise as to their accuracy. No person in this firm's employment has the authority to make or give any representation or warranty in respect of the property.

20 Western Gateway, Royal Victoria Dock, London, E16 1BS  
 Tel: 020 3946 6000 Email: docklands@madisonbrook.com <https://madisonbrook.com/>

## Floor Plan



## Area Map



## Energy Efficiency Graph

