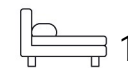


Living
made
better

Sherrington Court
London, E16 1FQ



Asking Price £365,000

Sherrington Court, London E16 1FQ

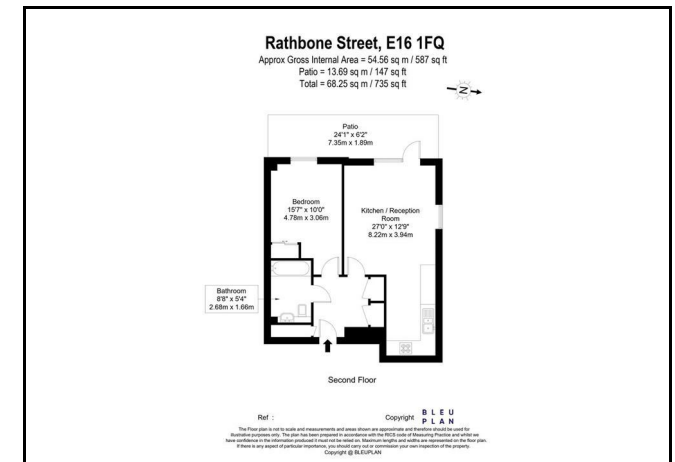
Madison Brook

Modern, bright and set in the sought-after Hallsville Quarter development, this superb one bedroom, apartment boasts a private patio and is located moments from Canning Town underground Station.

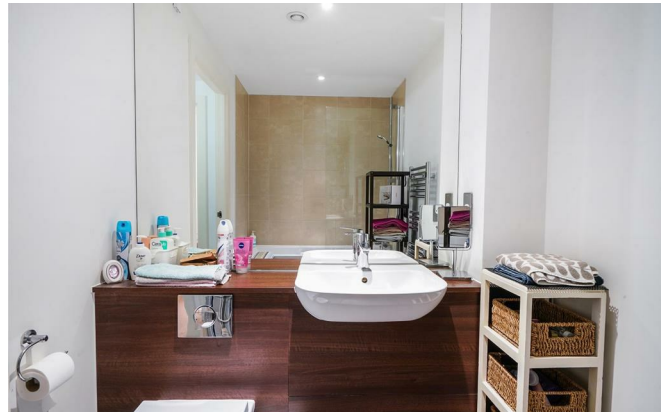
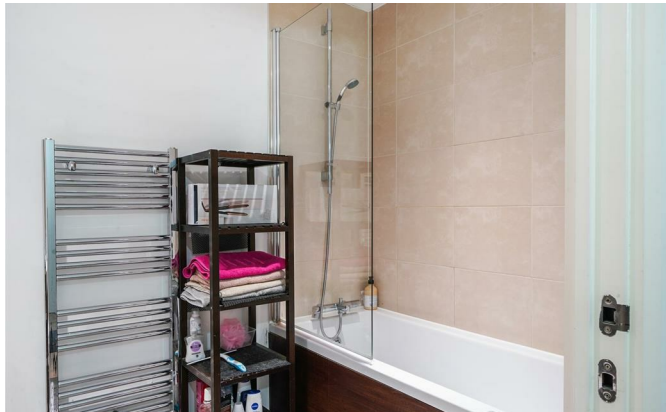
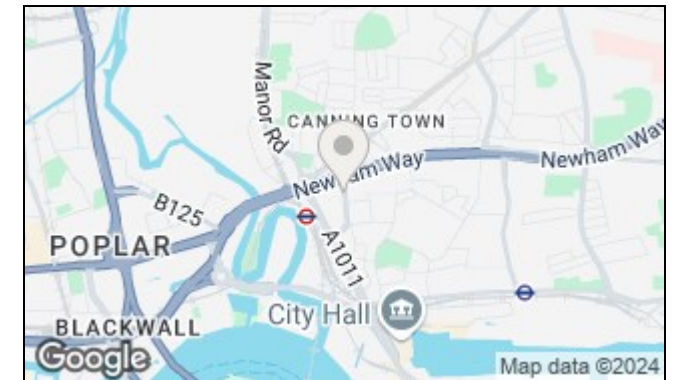
The property comprises of an open plan well equipped & stylish kitchen, lounge leading onto a private patio, a generous sized, double bedroom with built in wardrobe space and a three piece, family bathroom.

Sherrington Court is well served with on-site shops and eateries whilst local transport links include Canning Town (Jubilee & DLR) and a selection of useful roads for access into the City and Canary Wharf.

Floorplan



Area Map



These particulars, whilst believed to be accurate are set out as a general outline only for guidance and do not constitute any part of an offer or contract. Intending purchasers should not rely on them as statements of representation of fact, but must satisfy themselves by inspection or otherwise as to their accuracy. No person in this firm's employment has the authority to make or give any representation or warranty in respect of the property.

20 Western Gateway, Royal Victoria Dock, London, E16 1BS
 Tel: 020 3946 6000 Email: docklands@madisonbrook.com <https://madisonbrook.com/>

Energy Efficiency Graph

